

Fort Vancouver Regional Library District

Statement Of Revenue

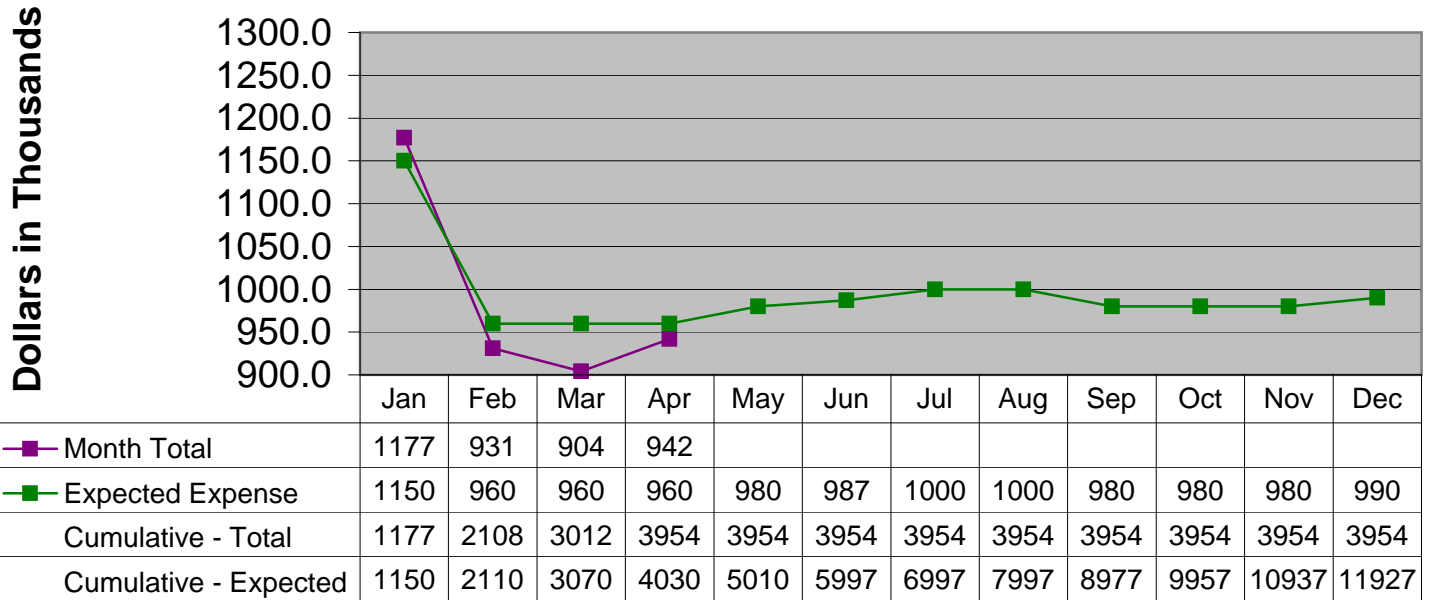
For the Year Ending April, 2009 (With year-to-date totals)

	2009 Budget (Amended Feb. 2009)	April, 2009 Revenues	All Revenue Received thru April, 2009	Year -to - Date Annual Budget Percent	
Property Taxes					
311.10	Property Taxes - Clark	\$15,019,898	\$5,801,462	\$6,802,613	45.29%
311.10	Property Taxes - Skamania	\$446,092	\$32,941	\$51,130	11.46%
311.10	Property Taxes - Klickitat	\$959,552	\$41,660	\$98,865	10.30%
311.10	Property Taxes - Cowlitz	\$190,148	\$6,973	\$15,396	8.10%
	Total Property Taxes	<u>16,615,690</u>	<u>\$5,883,036</u>	<u>6,968,004</u>	<u>41.94%</u>
Other Taxes					
311.11	Other General Tax	\$100,000	\$2,073	\$21,669	21.67%
318.20	Leasehold Excise Tax	\$50,000	\$540	\$7,232	14.46%
	Total Other Taxes	<u>\$150,000</u>	<u>\$2,613</u>	<u>\$28,901</u>	<u>19.27%</u>
Intergovernmental, Grants & Contracts					
332.00	Federal in-lieu of Taxes	\$2,500	\$0	\$0	0.00%
333.00	Readiness to Learn Grant	\$0	\$7,359	\$14,919	0.00%
335.05	State Forest Boards	\$50,000	\$1,929	\$8,523	17.05%
338.72	State Grants-Gates Foundation/ESD	\$30,000	\$0	\$0	0.00%
338.72	Department of Early Learning Grant	\$120,000	\$252	\$15,921	13.27%
338.72	Yale Valley Library Dist	\$56,525	\$0	\$0	0.00%
338.72	INET City of Vancouver (PEG)	\$40,000	\$0	\$0	0.00%
338.72	Contracts - Clark County Jail	\$500	\$0	\$0	0.00%
338.72	Contract - City of Camas	\$15,000	\$0	\$1,256	8.37%
338.72	Pass-Thru - City of Camas	\$7,100	\$0	\$0	0.00%
338.72	Contract - SW Wash Medical Center	\$5,000	\$0	\$0	0.00%
338.72	Pass-thru - SW Wash Medical Center	\$4,700	\$0	\$0	0.00%
338.72	VLCFA	\$126,000	\$0	\$0	0.00%
338.72	Library Foundation - Personnel	\$286,000	\$21,027	\$68,526	23.96%
	Total Intergovernmental, Grants & Contracts	<u>\$743,325</u>	<u>\$30,567</u>	<u>\$109,145</u>	<u>14.68%</u>
Charges for Services					
341.60	Equipment Use Fees	\$25,000	\$2,123	\$8,889	35.56%
347.21	Non-Resident Borrower Fee	\$3,000	\$285	\$1,971	65.70%
347.90	Lost / Damaged Material Fee	\$30,000	\$3,100	\$14,031	46.77%
347.50	Collection Agency Referral Fee	\$17,000	\$960	\$4,346	25.56%
	Total Charges for Services	<u>\$75,000</u>	<u>\$6,468</u>	<u>\$29,237</u>	<u>38.98%</u>
Miscellaneous					
361.11	Investment Interest	\$200,000	\$3,649	\$21,694	10.85%
367.10	Gifts/Contributions	\$2,500	\$220	\$1,028	41.12%
369.90	Library Friends Groups' Reimbursements	\$15,000	\$1,228	\$4,913	32.75%
369.90	Library Foundation Reimbursements	\$0	\$206	\$6,994	0.00%
369.40	Insurance Reimbursements	\$0	\$0	\$1,768	100.00%
369.90	Miscellaneous	\$10,000	\$5,735	\$6,675	66.75%
369.90	Postage Contributions	\$0	\$0	\$25	100.00%
369.90	Other Miscellaneous - E-Rate	\$50,000	\$31,631	\$31,631	63.26%
395.00	Sale of Assets	\$5,000	\$927	\$3,434	68.68%
	Total Miscellaneous	<u>\$282,500</u>	<u>\$43,596</u>	<u>\$78,162</u>	<u>27.67%</u>
		<u>\$17,866,515</u>	<u>\$5,966,280</u>	<u>\$7,213,449</u>	<u>40.37%</u>

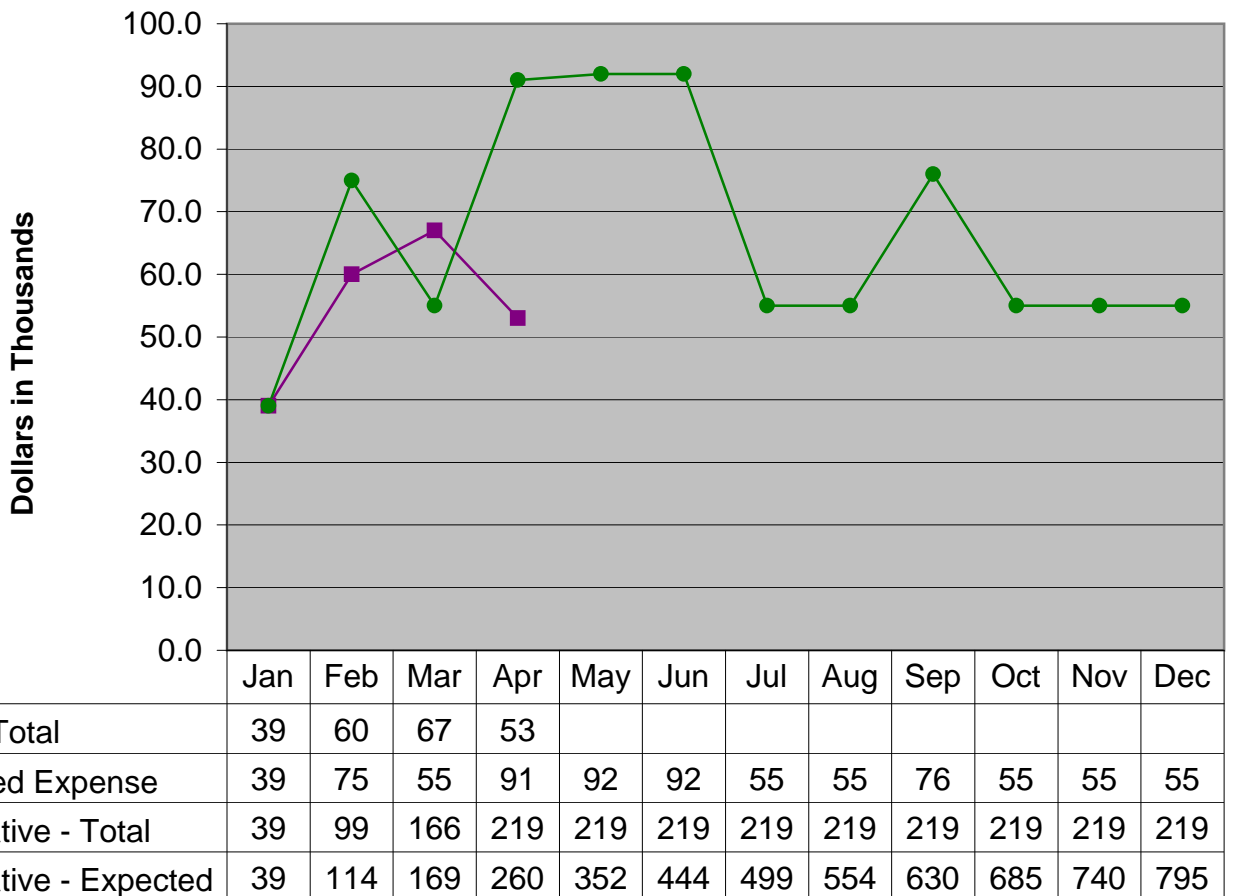
Fort Vancouver Regional Library District
Statement of Expenses
For the Year Ending April, 2009 (With year-to-date totals)

<u>Bars</u>	<u>Description</u>	2009 Budget (Amended Feb. 2009)	April, 2009 Expenditures	Year-to-Date Totals thru April, 2009	Year to Date Annual Budget Percentage
Personnel Services					
572.00	Wages & Benefits	11,927,758	942,349	3,954,266	33.15%
572.28	Unemployment Expense	10,000	10,250	13,269	132.69%
		11,937,758	952,599	3,967,535	33.24%
Supplies					
572.30	Supplies	470,664	30,541	87,562	18.60%
572.35 & 38	Computer Supplies / Small Equipment	495,564	42,307	50,672	10.23%
		966,228	72,848	138,234	14.31%
Library Books / Materials					
572.34	Library Books & Materials	1,708,000	121,507	309,338	18.11%
572.39	Electronic Resources	310,491	38,055	72,946	23.49%
		2,018,491	159,562	382,284	18.94%
Other Services / Charges					
572.41	Professional Services	795,070	53,404	222,631	28.00%
572.42	Communications	624,867	17,496	171,638	27.47%
572.43	Training / Travel	84,023	1,848	4,650	5.53%
572.44	Advertising	32,400	1,594	3,334	10.29%
572.45	Rentals / Leases	399,860	27,819	128,920	32.24%
572.46	Insurance	113,300	0	769	0.68%
572.47	Utilities	309,260	14,608	104,084	33.66%
572.48	Repairs & Maintenance	478,859	16,185	98,027	20.47%
572.49	Misc / Dues / Printing / Other	166,660	13,546	78,132	46.88%
572.50	Intergovernmental Services	4,300	610	10,195	237.09%
		3,008,599	147,110	822,380	27.33%
Capital Outlay					
572.62	Buildings / Non-Owned	0	0	0	0.00%
594.62	Buildings / Owned	0	0	0	0.00%
597.62	Battle Ground Building Fund	0	0	0	0.00%
594.64	Machinery & Equipment	67,950	0	1,139	1.68%
		67,950	0	1,139	1.68%
Debt Services					
591.70	Debt Service Principal	59,671	0	32,664	54.74%
592.80	Debt Service Interest	29,472	0	11,907	40.40%
		89,143	0	44,571	50.00%
Contracting Libraries					
572.51	Contract Libraries Expenditures	11,500	946	3,653	31.77%
		11,500	946	3,653	31.77%
Grand Total:		\$ 18,099,669	\$ 1,333,065	\$ 5,359,797	29.61%
Net Cash Activity				1,853,652	
January 1, 2009 Cash Balance				4,959,965	
Ending Cash Balance				6,813,617	

Personnel 2009



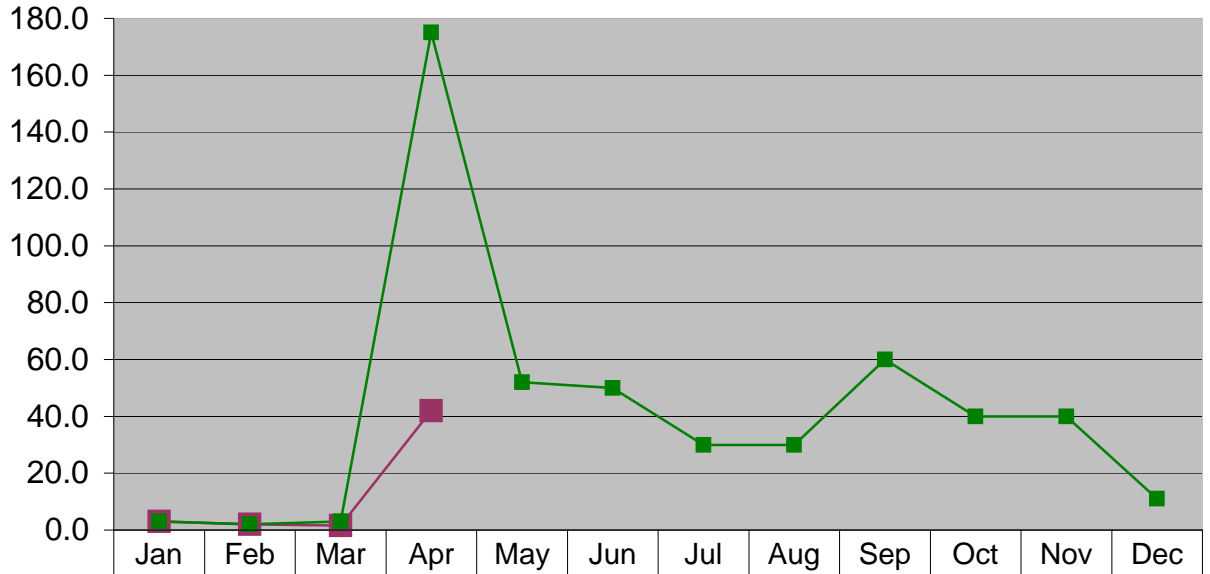
Professional Services 2009



** "All Other professional services" includes: OCLC, TSD Preprocessing services, Telephone System configuration and Staff Development Conference"

Small Equipment 2009

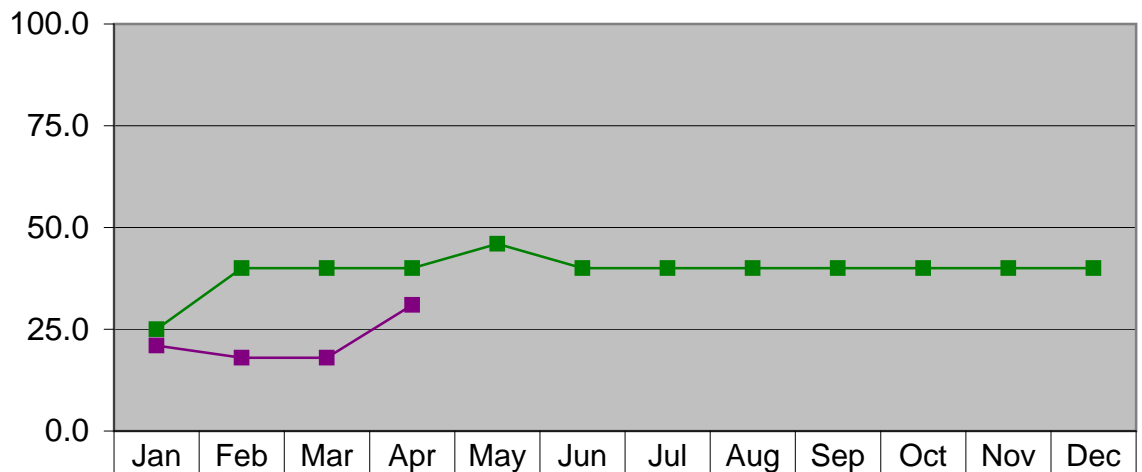
Dollars in Thousands



Month Total	3.0	2.0	1.6	42.0								
Expected	3.0	2.0	3.0	175.0	52.0	50.0	30.0	30.0	60.0	40.0	40.0	11.0
Cumulative - Total	3.0	5.0	6.6	48.6	48.6	48.6	48.6	48.6	48.6	48.6	48.6	48.6
Cumulative - Expected	3.0	5.0	8.0	183.0	235.0	285.0	315.0	345.0	405.0	445.0	485.0	496.0

General and Other Supplies 2009

Dollars in Thousands

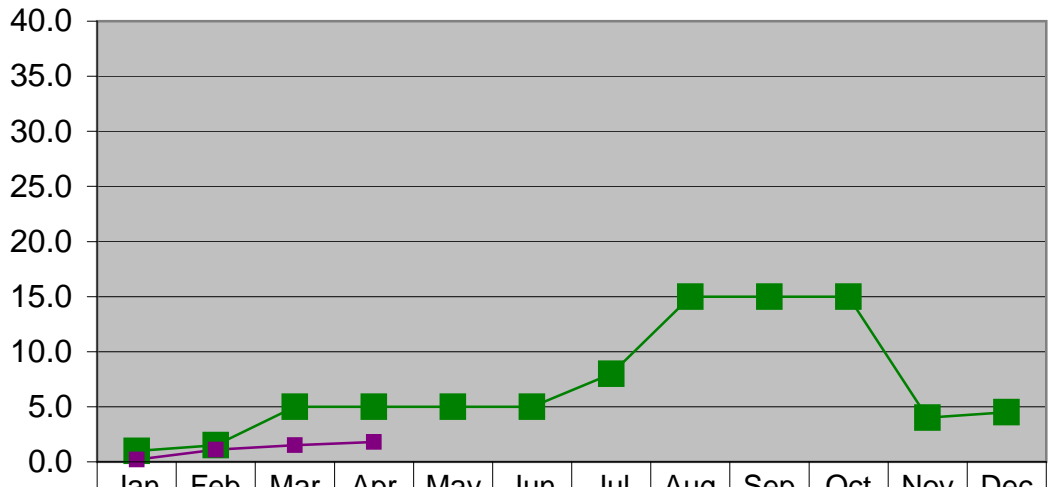


Total Supplies	21.0	18.0	18.0	31.0								
Expected	25.0	40.0	40.0	40.0	46.0	40.0	40.0	40.0	40.0	40.0	40.0	40.0
Cumulative - Total	21.0	39.0	57.0	88.0	88.0	88.0	88.0	88.0	88.0	88.0	88.0	88.0
Cumulative - Expected	25.0	65.0	105.0	145.0	191.0	231.0	271.0	311.0	351.0	391.0	431.0	471.0

** "All Other Supplies includes Facilities, Computer Services, Janitorial and Summer Reading Supplies

Travel & Training 2009

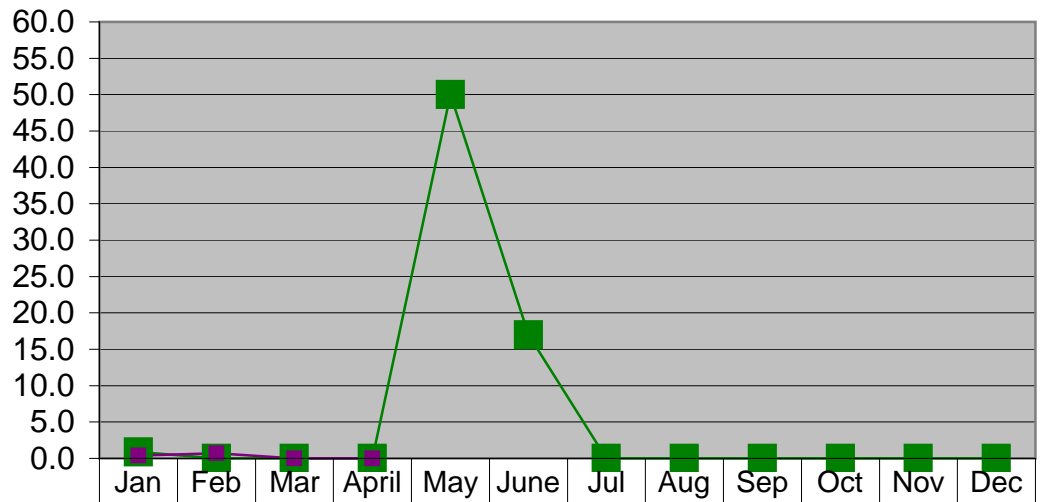
Dollars in Thousands



Expected	1.0	1.5	5.0	5.0	5.0	5.0	8.0	15.0	15.0	15.0	4.0	4.5
Month Total	0.2	1.1	1.5	1.8								
Cumulative - Total	0.2	1.3	2.8	4.6	4.6	4.6	4.6	4.6	4.6	4.6	4.6	4.6
Cumulative - Expected	1.0	2.5	7.5	12.5	17.5	22.5	30.5	45.5	60.5	75.5	79.5	84.0

Capital Expenses 2009

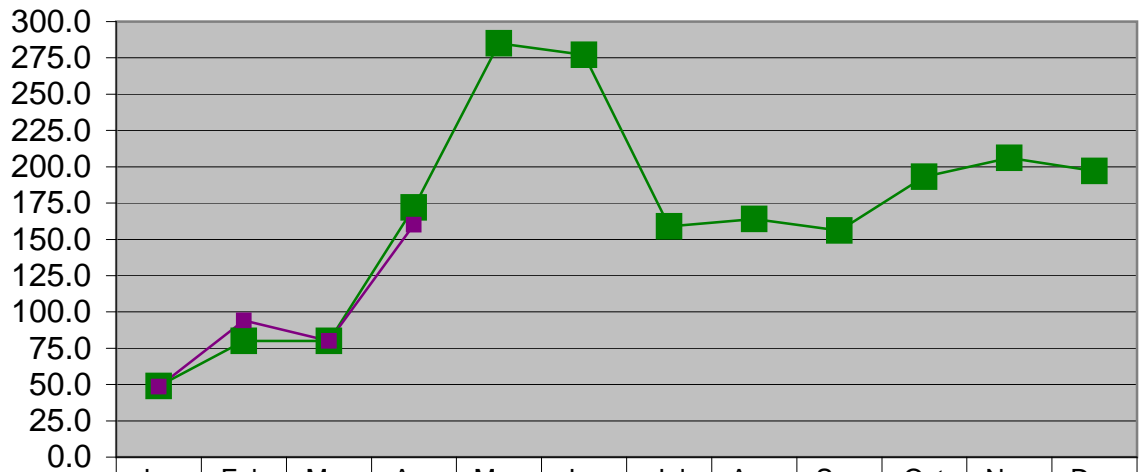
Dollars in Thousands



Expected	0.9	0.0	0.0	0.0	50.0	17.0	0.0	0.0	0.0	0.0	0.0	0.0
Month Total	0.4	0.7	0.0	0.0								
Cumulative - Total	0.4	1.1	1.1	1.1	1.1	1.1	1.1	1.1	1.1	1.1	1.1	1.1
Cumulative - Expected	0.9	0.9	0.9	0.9	50.9	67.9	67.9	67.9	67.9	67.9	67.9	67.9

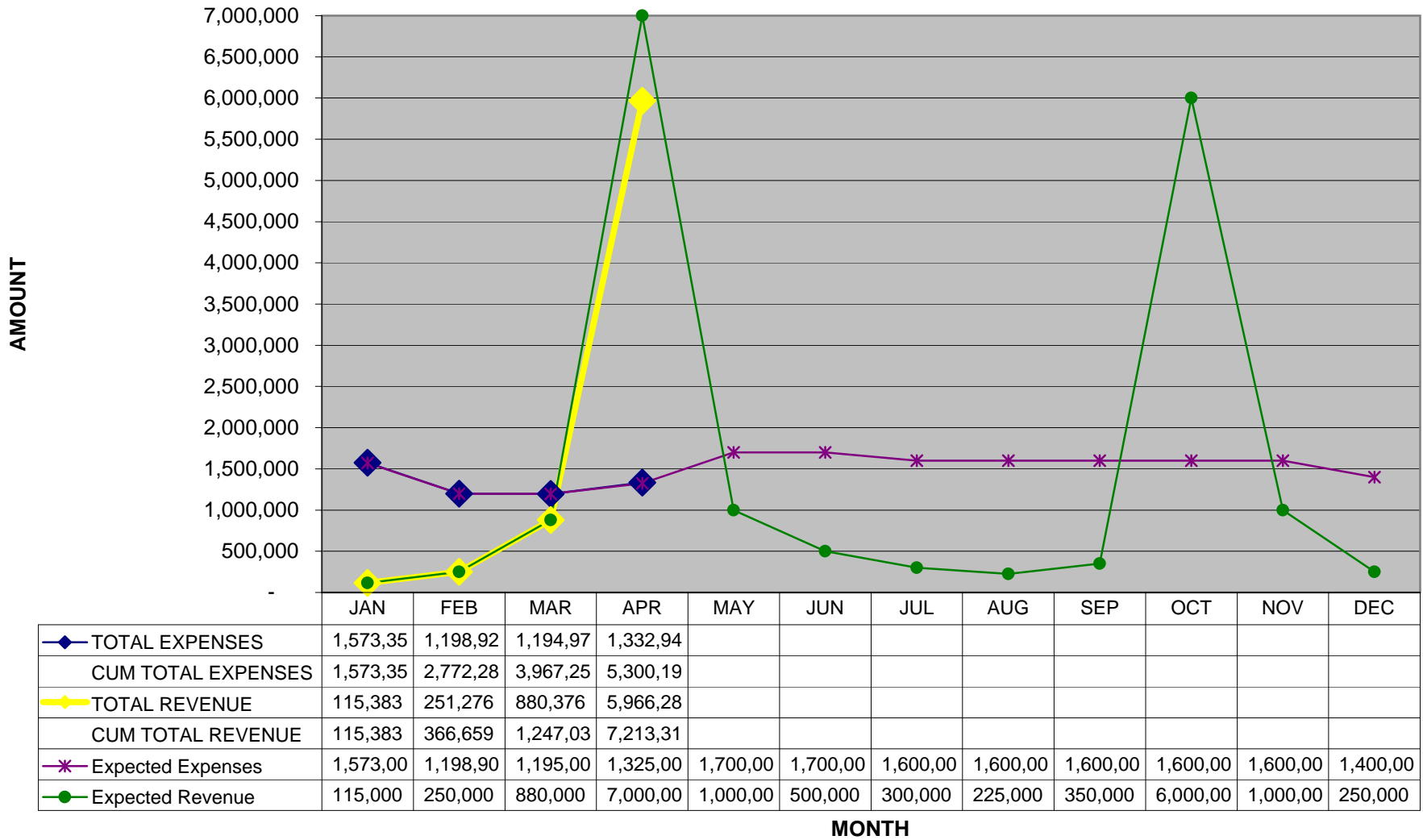
Library Materials 2009

Dollars in Thousands

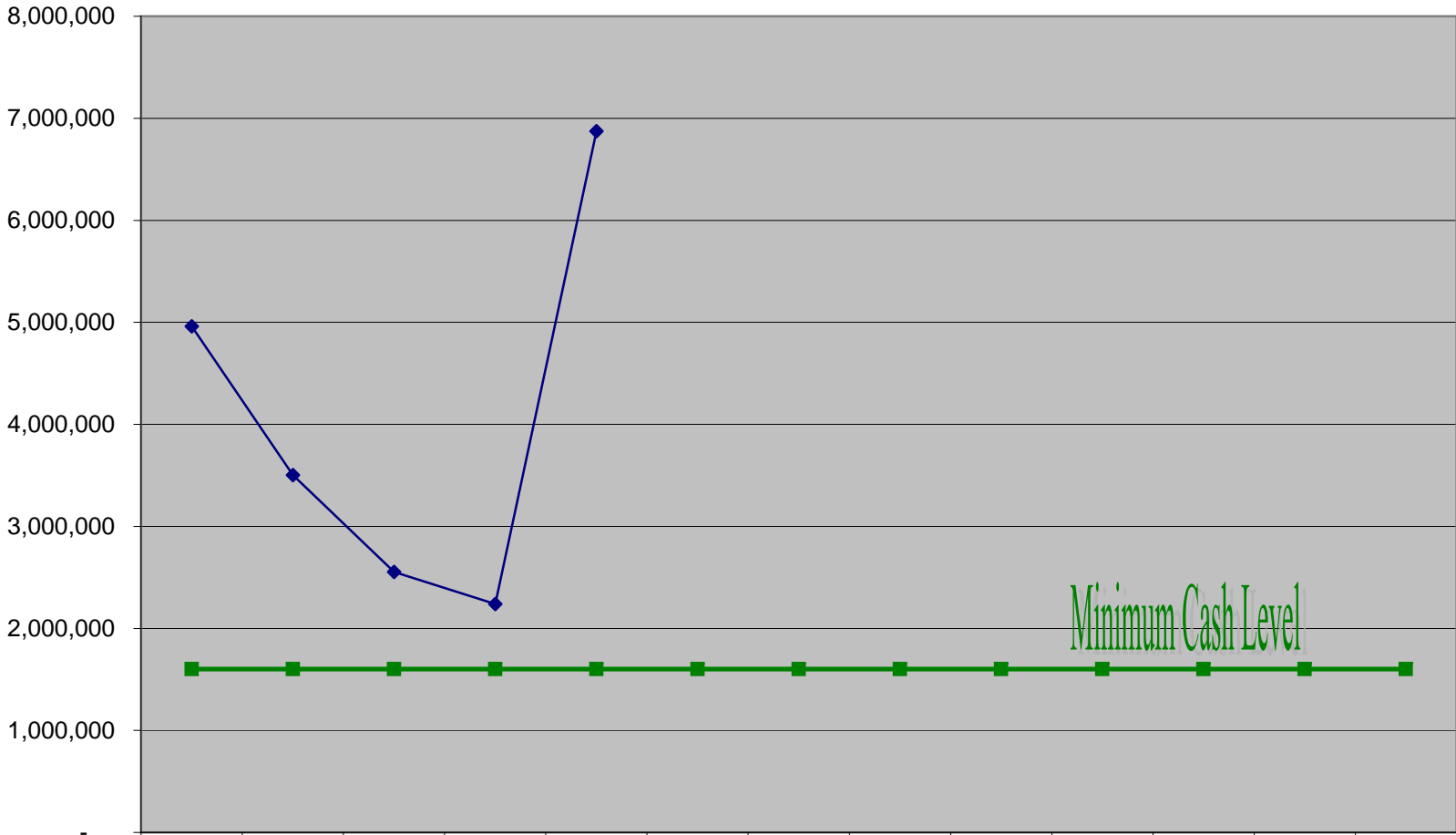


Expected	49.0	80.0	80.0	172.0	285.0	277.0	159.0	164.0	156.0	193.0	206.0	197.0
Month Total	48.5	94.1	80.0	160.0								
Cumulative - Total	48.5	142.6	222.6	382.6	382.6	382.6	382.6	382.6	382.6	382.6	382.6	382.6
Cumulative - Expected	49.0	129.0	209.0	381.0	666.0	943.0	1102.0	1266.0	1422.0	1615.0	1821.0	2018.0

FVRL 2009 EXPENSES & REVENUE



FVRL 2009 CASH BALANCE & MINIMUM CASH LEVEL



	DEC	JAN	FEB	MAR	APR	MAY	JUN	JUL	AUG	SEP	OCT	NOV	DEC
◆ CASH BALANCE	4,959,859	3,501,883	2,554,237	2,239,636	6,873,099								
■ MINIMUM CASH LEVEL	1,600,000	1,600,000	1,600,000	1,600,000	1,600,000	1,600,000	1,600,000	1,600,000	1,600,000	1,600,000	1,600,000	1,600,000	1,600,000

MONTHS