

Fort Vancouver Regional Library District

Statement Of Revenue

For the Year Ending June 2008 (With year-to-date totals)

	2008 Budget Amended June 2008	June, 2008 Revenues	All Revenue Received thru June, 2008	Year -to - Date Annual Budget Percent	
Property Taxes					
311.10	Property Taxes - Clark	\$14,803,342	\$80,542	\$7,890,643	53.30%
311.10	Property Taxes - Skamania	\$405,315	\$30,167	\$232,568	57.38%
311.10	Property Taxes - Klickitat	\$686,864	\$302,204	\$415,527	60.50%
311.10	Property Taxes - Cowlitz	\$165,912	\$24,939	\$88,713	53.47%
	Total Property Taxes	<u>16,061,433</u>	<u>\$437,852</u>	<u>8,627,451</u>	<u>53.72%</u>
Other Taxes					
311.11	Other General Tax	\$100,000	\$15,613	\$35,124	35.12%
318.20	Leasehold Excise Tax	\$50,000	\$366	\$25,255	50.51%
	Total Other Taxes	<u>\$150,000</u>	<u>\$15,979</u>	<u>\$60,379</u>	<u>40.25%</u>
Intergovernmental, Grants & Contracts					
332.00	Federal in-lieu of Taxes	\$2,500	\$3,872	\$5,879	235.16%
333.00	Readiness to Learn Grant	\$0	\$0	\$17,170	100.00%
335.05	State Forest Boards	\$350,000	\$11,235	\$32,927	9.41%
338.72	Contract - Three Creeks	\$0	\$0	\$0	100.00%
338.72	CONTRACTS - Intergovernmental	\$0	\$0	\$0	100.00%
338.72	Yale Valley Library Dist	\$55,965	\$0	\$0	0.00%
338.72	INET City of Vancouver (PEG)	\$40,000	\$0	\$43,008	107.52%
338.72	Contracts - Clark County Jail	\$500	\$0	\$1,500	300.00%
338.72	Contract - City of Camas	\$15,000	\$0	\$6,255	41.70%
338.72	Pass-Thru - City of Camas	\$7,100	\$0	\$0	0.00%
338.72	Contract - SW Wash Medical Center	\$5,000	\$0	\$2,908	58.16%
338.72	Pass-thru - SW Wash Medical Center	\$4,700	\$0	\$0	0.00%
338.72	Pass-thru - VLCFA	\$200,000	\$0	\$0	0.00%
338.72	CONTRACTS-Foundation	\$275,000	\$67,977	\$166,565	60.57%
	Total Intergovernmental, Grants & Contracts	<u>\$955,765</u>	<u>\$83,084</u>	<u>\$276,212</u>	<u>28.90%</u>
Charges for Services					
341.60	Equipment Use Fees	\$25,000	\$1,779	\$11,747	46.99%
347.21	Non-Resident Borrower Fee	\$3,000	\$665	\$3,301	110.03%
340.10	Misc Charge for Services	\$0	\$0	\$0	0.00%
347.90	Lost / Damaged Material Fee	\$30,000	\$2,944	\$22,644	75.48%
359-70	Collection Agency Referral Fee	\$17,000	\$1,347	\$6,147	36.16%
	Total Charges for Services	<u>\$75,000</u>	<u>\$6,735</u>	<u>\$43,839</u>	<u>58.45%</u>
Miscellaneous					
361.11	Investment Interest	\$250,000	\$18,398	\$129,720	51.89%
367.11	Contract - Private Grants	\$0	\$0	\$0	100.00%
367.00	Gifts/Contributions	\$2,500	\$385	\$1,838	73.52%
367.00	Foundation Grants / Donations	\$15,000	\$2,758	\$10,803	72.02%
369.40	Insurance Reimbursements	\$0	\$0	\$750	100.00%
369.90	Miscellaneous	\$10,000	-\$1,335	\$6,237	62.37%
369.90	Postage Contributions	\$0	\$0	\$0	100.00%
369.90	Other Miscellaneous - E-Rate	\$50,000	\$0	\$2,495	4.99%
395.00	Sale of Assets	\$5,000	\$679	\$4,621	92.42%
	Total Miscellaneous	<u>\$332,500</u>	<u>\$20,885</u>	<u>\$156,464</u>	<u>47.06%</u>
		<u>\$17,574,698</u>	<u>\$564,535</u>	<u>\$9,164,345</u>	<u>52.15%</u>

Fort Vancouver Regional Library District
Statement of Expenses
For the Year Ending June 2008 (With year-to-date totals)

<u>Bars</u>	<u>Description</u>	2008 Budget (Amended June 2008)	June 2008 Expenditures	Year-to-Date Totals thru June 2008	Year to Date Annual Budget Percentage
Personnel Services					
572.00	Wages & Benefits	11,984,589	941,893	6,054,314	50.52%
572.28	Unemployment Expense	1,000	0	1,508	150.80%
		11,985,589	941,893	6,055,822	50.53%
Supplies					
572.30	Supplies	558,532	37,753	248,412	44.48%
572.35 & 38	Computer Supplies / Small Equipment	720,128	19,875	129,259	17.95%
		1,278,660	57,628	377,671	29.54%
Library Books / Materials					
572.34	Library Books & Materials	1,694,160	190,187	705,813	41.66%
572.39	Electronic Resources	301,500	8,196	180,494	59.87%
		1,995,660	198,383	886,307	44.41%
Other Services / Charges					
572.41	Professional Services	614,333	31,676	250,769	40.82%
572.42	Communications	753,160	60,184	401,892	53.36%
572.43	Training / Travel	139,457	8,700	95,055	68.16%
572.44	Advertising	39,000	1,334	10,860	27.85%
572.45	Rentals / Leases	382,539	30,097	205,077	53.61%
572.46	Insurance	110,000	81,248	83,170	75.61%
572.47	Utilities	275,025	16,782	116,603	42.40%
572.48	Repairs & Maintenance	392,698	4,992	195,521	49.79%
572.49	Misc / Dues / Printing / Other	174,025	4,588	79,499	45.68%
572.50	Intergovernmental Services	14,400	819	11,225	77.95%
		2,894,637	240,420	1,449,671	50.08%
Capital Outlay					
572.62	Buildings / Non-Owned	87,300	35	36,053	41.30%
594.62	Buildings / Owned	5,000	0	1,249	24.98%
594.64	Machinery & Equipment	167,950	0	45,116	26.86%
		260,250	35	82,418	31.67%
Debt Services					
591.70	Debt Service Principal	59,671	0	31,015	51.98%
592.80	Debt Service Interest	29,472	0	13,556	46.00%
		89,143	0	44,571	50.00%
Contracting Libraries					
	Contract Libraries Expenditures	11,500	0	9,981	86.79%
		11,500	0	9,981	86.79%
Grand Total:		\$ 18,515,439	\$ 1,438,359	\$ 8,906,441	48.10%

Personnel 2008

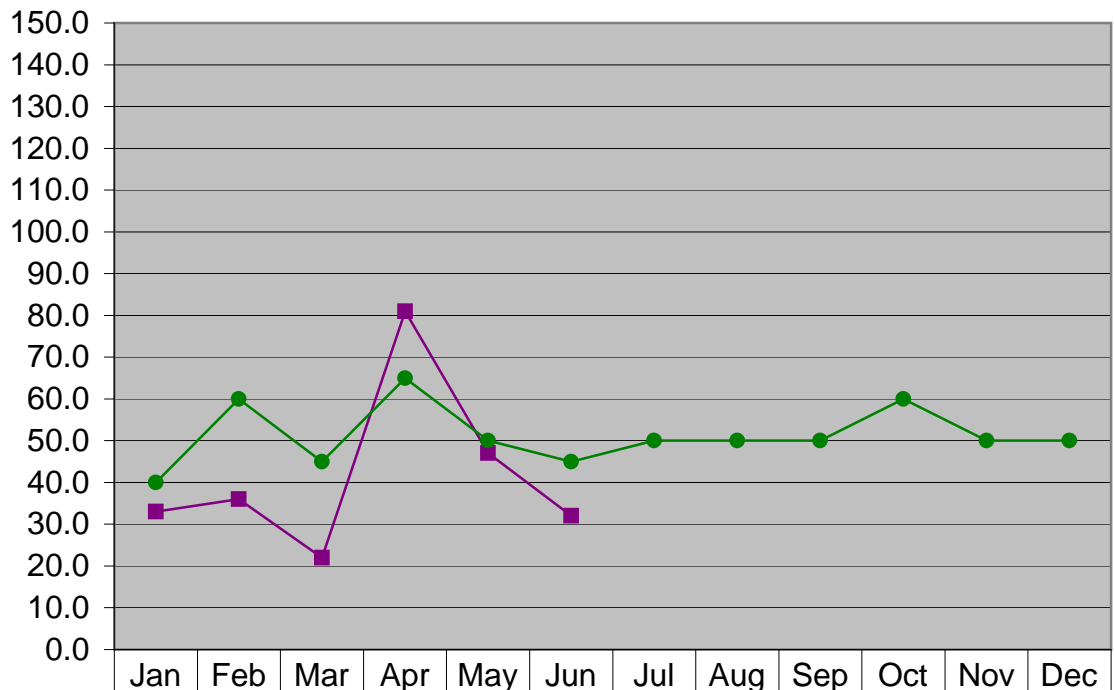
Dollars in Thousands



Month Total	950	899	1289	1012	988	942						
Expected Expense	972	1006	1006	1006	1006	998	998	999	999	999	998	998
Cumulative - Total	950	1849	3138	4150	5138	6080	6080	6080	6080	6080	6080	6080
Cumulative - Expected	972	1978	2984	3990	4996	5994	6992	7991	8990	9989	10987	11985

Professional Services 2008

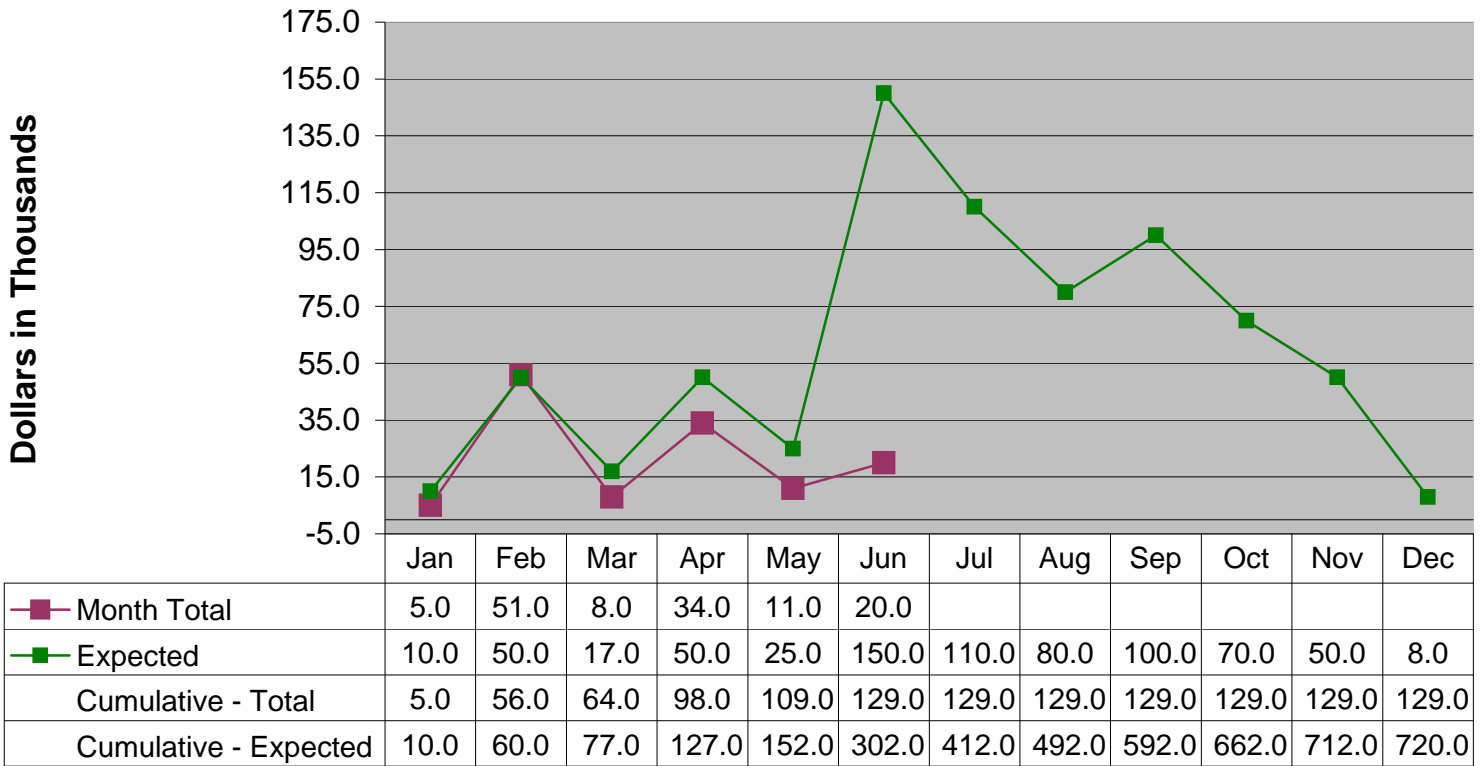
Dollars in Thousands



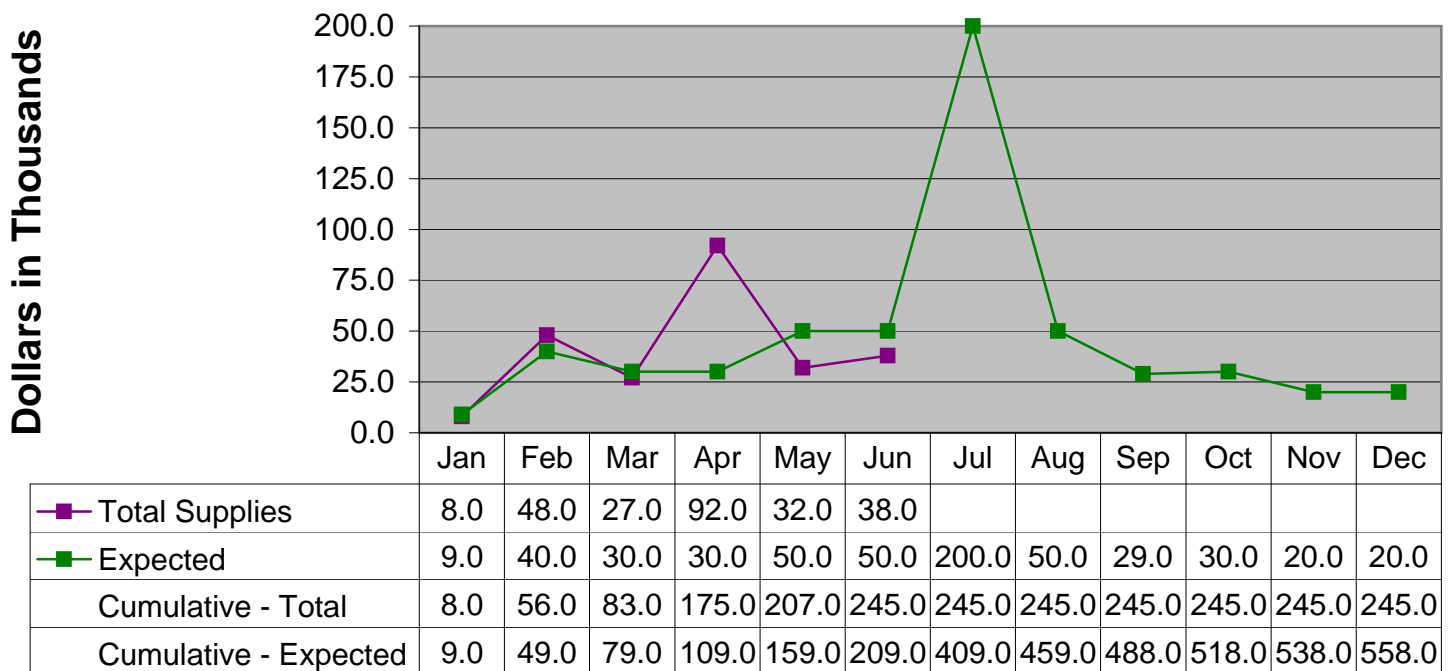
Month Total	33	36	22	81	47	32						
Expected Expense	40	60	45	65	50	45	50	50	50	60	50	50
Cumulative - Total	33	69	91	172	219	251	251	251	251	251	251	251
Cumulative - Expected	40	100	145	210	260	305	355	405	455	515	565	615

** "All Other professional services" includes: OCLC, TSD Preprocessing services, Telephone System configuration and Staff Development Conference"

Small Equipment 2008



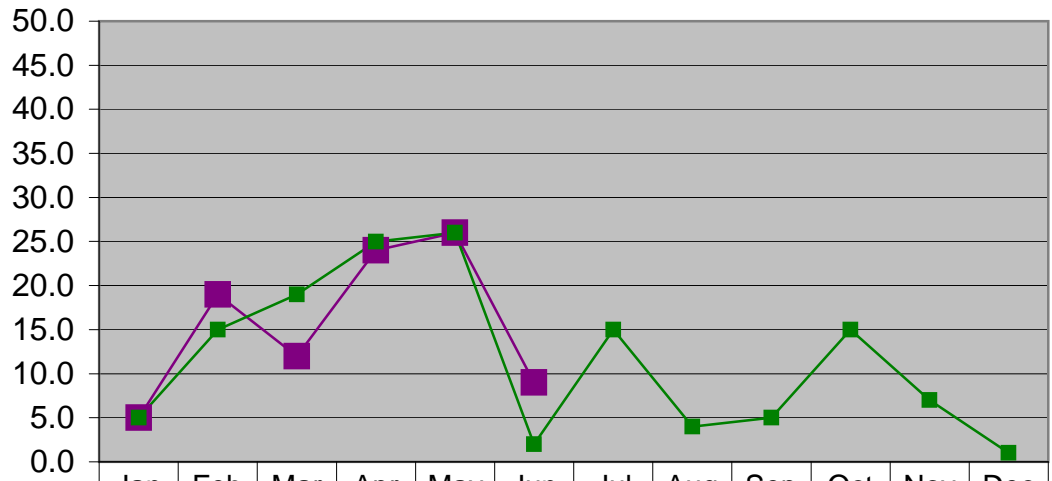
General and Other Supplies 2008



** "All Other Supplies includes Facilities, Computer Services, Janitorial and Summer Reading Supplies

Travel & Training 2008

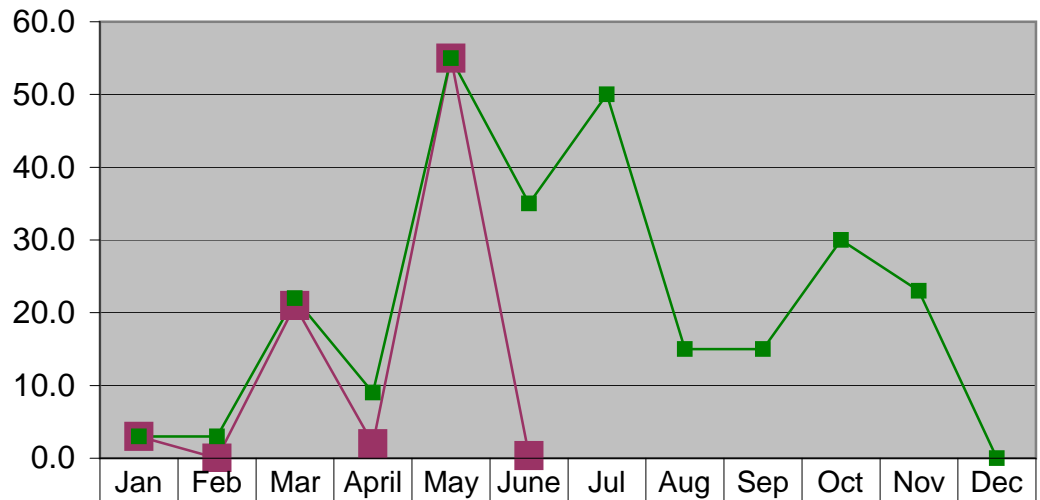
Dollars in Thousands



	Jan	Feb	Mar	Apr	May	Jun	Jul	Aug	Sep	Oct	Nov	Dec
—■— Month Total	5	19	12	24	26	9						
—■— Expected	5	15	19	25	26	2	15	4	5	15	7	1
Cumulative - Total	5	24	36	60	86	95	95	95	95	95	95	95
Cumulative - Expected	5	20	39	64	90	92	107	111	116	131	138	139

Capital Expenses 2008

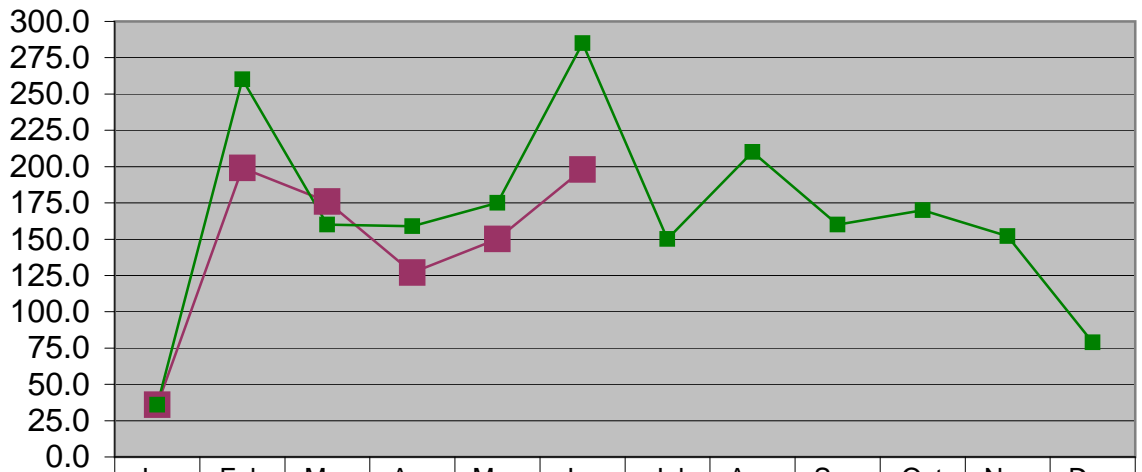
Dollars in Thousands



Month Total	3	0	21	2	55	0						
Expected	3	3	22	9	55	35	50	15	15	30	23	0
Cumulative - Total	3	3	24	26	81	81	81	81	81	81	81	81
Cumulative - Expected	3	6	28	37	92	127	177	192	207	237	260	260

Library Materials 2008

Dollars in Thousands



Month Total	36.0	199.0	176.0	127.0	150.0	198.0						
Expected	36.0	260.0	160.0	159.0	175.0	285.0	150.0	210.0	160.0	170.0	152.0	79.0
Cumulative - Total	36.0	235.0	411.0	538.0	688.0	886.0	886.0	886.0	886.0	886.0	886.0	886.0
Cumulative - Expected	36.0	296.0	456.0	615.0	790.0	1075.0	1225.0	1435.0	1595.0	1765.0	1917.0	1996.0