

# Fort Vancouver Regional Library District

## Statement Of Revenue

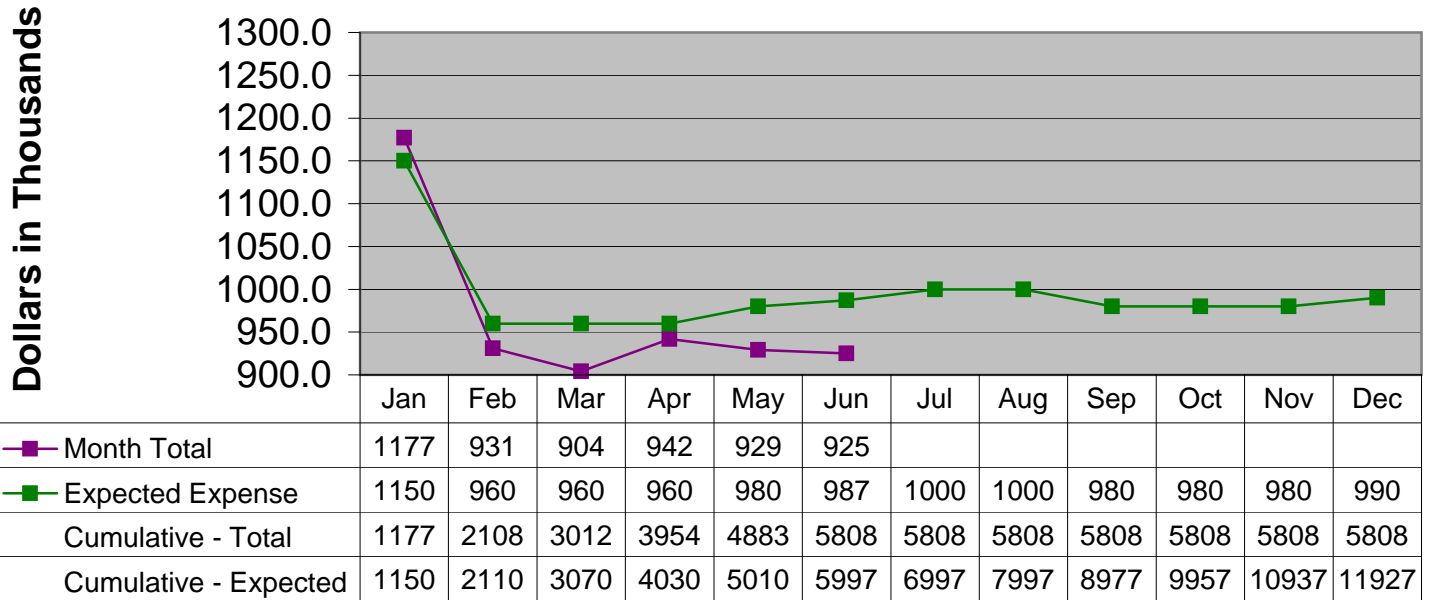
For the Year Ending June, 2009 (With year-to-date totals)

	2009 Budget (Amended Feb. 2009)	June, 2009 Revenues	All Revenue Received thru June, 2009	Year -to - Date Annual Budget Percent	
<b>Property Taxes</b>					
311.10	Property Taxes - Clark	\$15,019,898	\$105,041	\$8,044,906	53.56%
311.10	Property Taxes - Skamania	\$446,092	\$43,123	\$252,044	56.50%
311.10	Property Taxes - Klickitat	\$959,552	\$128,337	\$558,925	58.25%
311.10	Property Taxes - Cowlitz	\$190,148	\$25,083	\$99,224	52.18%
	<b>Total Property Taxes</b>	<b><u>16,615,690</u></b>	<b><u>\$301,584</u></b>	<b><u>\$8,955,099</u></b>	<b><u>53.90%</u></b>
<b>Other Taxes</b>					
311.11	Other General Tax	\$100,000	\$27,481	\$49,150	49.15%
318.20	Leasehold Excise Tax	\$50,000	\$2,185	\$10,096	20.19%
	<b>Total Other Taxes</b>	<b><u>\$150,000</u></b>	<b><u>\$29,666</u></b>	<b><u>\$59,246</u></b>	<b><u>39.50%</u></b>
<b>Intergovernmental, Grants &amp; Contracts</b>					
332.00	Federal in-lieu of Taxes	\$2,500	\$0	\$286	11.44%
333.00	Readiness to Learn Grant	\$0	\$0	\$14,919	0.00%
335.05	State Forest Boards	\$50,000	\$4,259	\$15,346	30.69%
338.72	State Grants-Gates Foundation/ESD	\$30,000	\$0	\$0	0.00%
338.72	Department of Early Learning Grant	\$120,000	\$0	\$26,671	22.23%
338.72	Yale Valley Library Dist	\$56,525	\$0	\$0	0.00%
338.72	INET City of Vancouver (PEG)	\$40,000	\$0	\$0	0.00%
338.72	Contracts - Clark County Jail	\$500	\$0	\$0	0.00%
338.72	Contract - City of Camas	\$15,000	\$0	\$0	0.00%
338.72	Pass-Thru - City of Camas	\$7,100	\$0	\$1,256	17.69%
338.72	Contract - SW Wash Medical Center	\$5,000	\$0	\$0	0.00%
338.72	Pass-thru - SW Wash Medical Center	\$4,700	\$0	\$0	0.00%
338.72	VLCFA	\$126,000	\$0	\$0	0.00%
338.72	Library Foundation - Personnel	\$286,000	\$24,062	\$119,866	41.91%
	<b>Total Intergovernmental, Grants &amp; Contracts</b>	<b><u>\$743,325</u></b>	<b><u>\$28,321</u></b>	<b><u>\$178,344</u></b>	<b><u>23.99%</u></b>
<b>Charges for Services</b>					
341.60	Equipment Use Fees	\$25,000	\$2,184	\$12,926	51.70%
347.21	Non-Resident Borrower Fee	\$3,000	\$570	\$3,016	100.53%
347.90	Lost / Damaged Material Fee	\$30,000	\$3,398	\$20,276	67.59%
347.50	Collection Agency Referral Fee	\$17,000	\$1,130	\$6,326	37.21%
	<b>Total Charges for Services</b>	<b><u>\$75,000</u></b>	<b><u>\$7,282</u></b>	<b><u>\$42,544</u></b>	<b><u>56.73%</u></b>
<b>Miscellaneous</b>					
361.11	Investment Interest	\$200,000	\$8,291	\$38,277	19.14%
367.10	Gifts/Contributions	\$2,500	\$394	\$1,678	67.12%
369.90	Library Friends Groups' Reimbursements	\$15,000	\$758	\$6,690	44.60%
369.90	Library Foundation Reimbursements	\$0	\$2,766	\$10,894	0.00%
369.40	Insurance Reimbursements	\$0	\$0	\$1,768	100.00%
369.90	Miscellaneous	\$10,000	\$1,253	\$10,396	103.96%
369.90	Postage Contributions	\$0	\$2	\$47	100.00%
369.90	Other Miscellaneous - E-Rate	\$50,000	\$0	\$31,631	63.26%
395.00	Sale of Assets	\$5,000	\$50,616	\$54,889	1097.78%
	<b>Total Miscellaneous</b>	<b><u>\$282,500</u></b>	<b><u>\$64,080</u></b>	<b><u>\$156,270</u></b>	<b><u>55.32%</u></b>
		<b><u>\$17,866,515</u></b>	<b><u>\$430,933</u></b>	<b><u>\$9,391,503</u></b>	<b><u>52.56%</u></b>

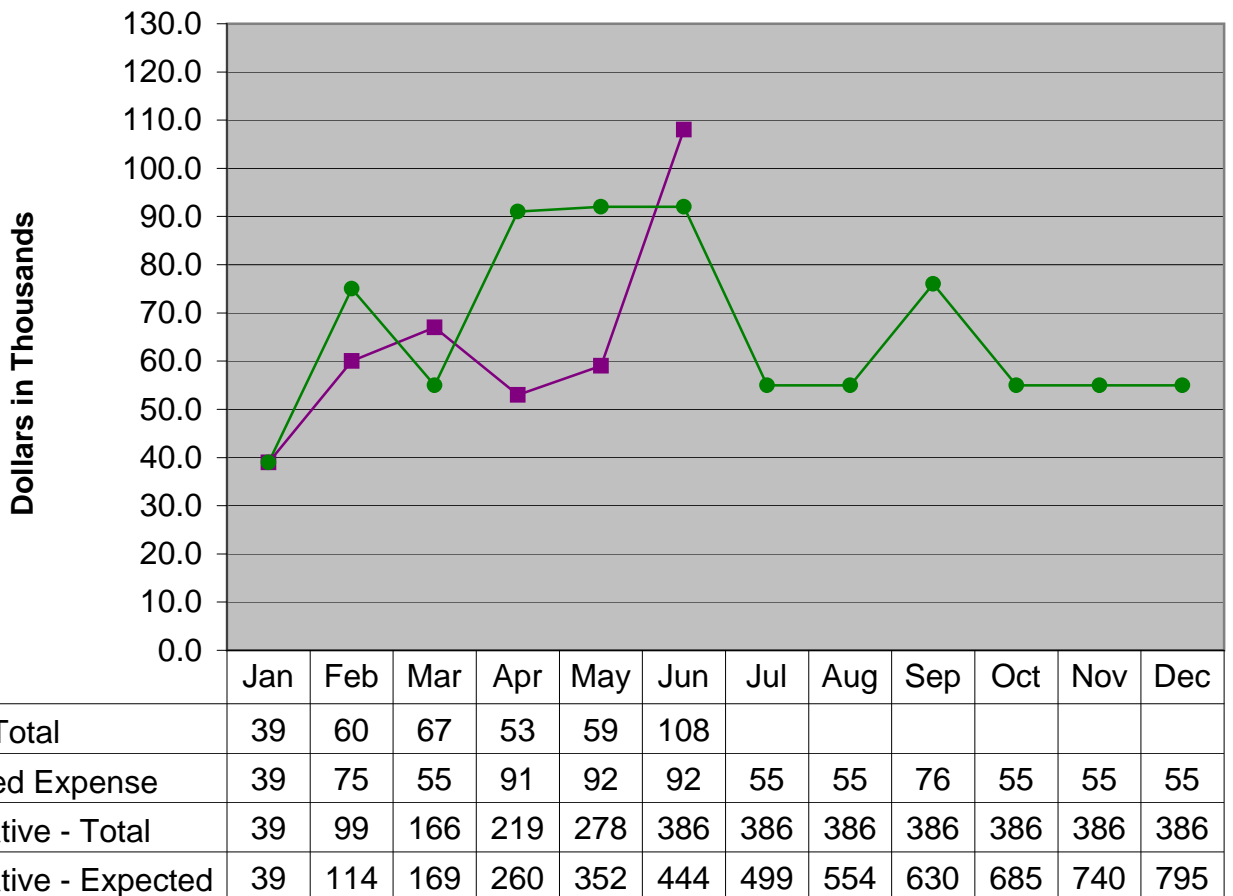
**Fort Vancouver Regional Library District**  
**Statement of Expenses**  
For the Year Ending June, 2009 (With year-to-date totals)

<u>Bars</u>	<u>Description</u>	2009 Budget (Amended Feb. 2009)	June, 2009 Expenditures	Year-to-Date Totals thru June, 2009	Year to Date Annual Budget Percentage
<b>Personnel Services</b>					
572.00	Wages & Benefits	11,927,758	925,487	5,808,168	48.69%
572.28	Unemployment Expense	10,000	0	13,269	132.69%
		<b>11,937,758</b>	<b>925,487</b>	<b>5,821,437</b>	<b>48.76%</b>
<b>Supplies</b>					
572.30	Supplies	470,664	55,982	161,270	34.26%
572.35 & 38	Computer Supplies / Small Equipment	495,564	4,985	54,047	10.91%
		<b>966,228</b>	<b>60,967</b>	<b>215,317</b>	<b>22.28%</b>
<b>Library Books / Materials</b>					
572.34	Library Books & Materials	1,708,000	222,756	628,040	36.77%
572.39	Electronic Resources	310,491	25,755	104,077	33.52%
		<b>2,018,491</b>	<b>248,511</b>	<b>732,117</b>	<b>36.27%</b>
<b>Other Services / Charges</b>					
572.41	Professional Services	795,070	108,265	385,726	48.51%
572.42	Communications	624,867	20,100	203,929	32.64%
572.43	Training / Travel	84,023	1,895	9,656	11.49%
572.44	Advertising	32,400	1,030	5,419	16.73%
572.45	Rentals / Leases	399,860	25,676	187,296	46.84%
572.46	Insurance	113,300	104,133	106,514	94.01%
572.47	Utilities	309,260	28,640	153,843	49.75%
572.48	Repairs & Maintenance	478,859	16,028	154,792	32.33%
572.49	Misc / Dues / Printing / Other	166,660	6,531	75,936	45.56%
572.50	Intergovernmental Services	4,300	1,089	3,579	83.23%
		<b>3,008,599</b>	<b>313,387</b>	<b>1,286,690</b>	<b>42.77%</b>
<b>Capital Outlay</b>					
572.62	Buildings / Non-Owned	0	0	0	0.00%
594.62	Buildings / Owned	0	0	0	0.00%
597.62	Battle Ground Building Fund	0	0	0	0.00%
594.64	Machinery & Equipment	67,950	0	1,139	1.68%
		<b>67,950</b>	<b>0</b>	<b>1,139</b>	<b>1.68%</b>
<b>Debt Services</b>					
591.70	Debt Service Principal	59,671	0	32,664	54.74%
592.80	Debt Service Interest	29,472	0	11,907	40.40%
		<b>89,143</b>	<b>0</b>	<b>44,571</b>	<b>50.00%</b>
<b>Contracting Entities</b>					
572.51	Contract Libraries Expenditures	11,500	709	5,007	43.54%
572.52	City of Vancouver - Pass through	0	22,569	22,569	0.00%
		<b>11,500</b>	<b>22,569</b>	<b>22,569</b>	<b>196.25%</b>
<b>Grand Total:</b>		<b>\$ 18,099,669</b>	<b>\$ 1,570,921</b>	<b>\$ 8,123,840</b>	<b>44.88%</b>
Net Cash Activity				1,267,663	
January 1, 2009 Cash Balance				4,959,965	
<b>Ending Cash Balance</b>				<b>6,227,628</b>	

## Personnel 2009

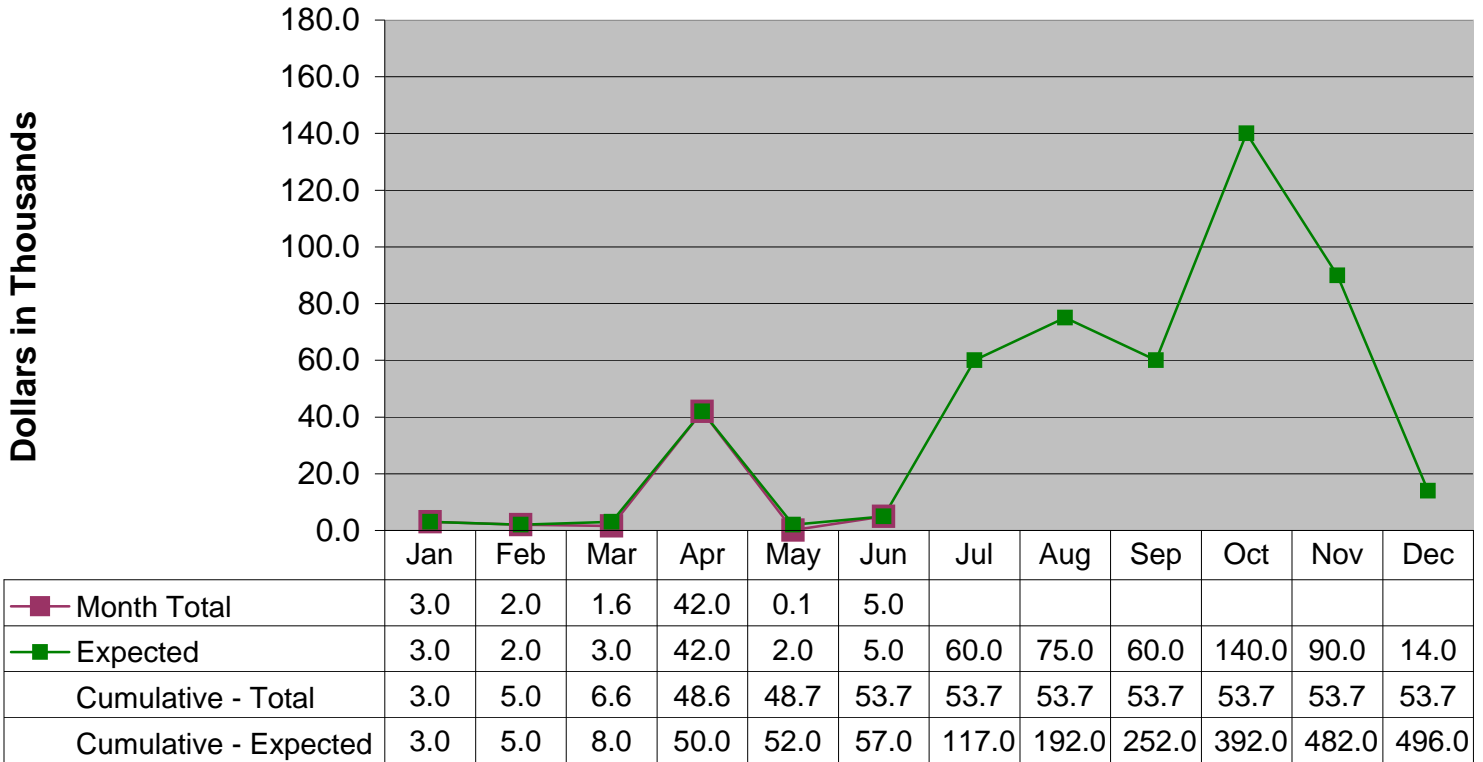


## Professional Services 2009

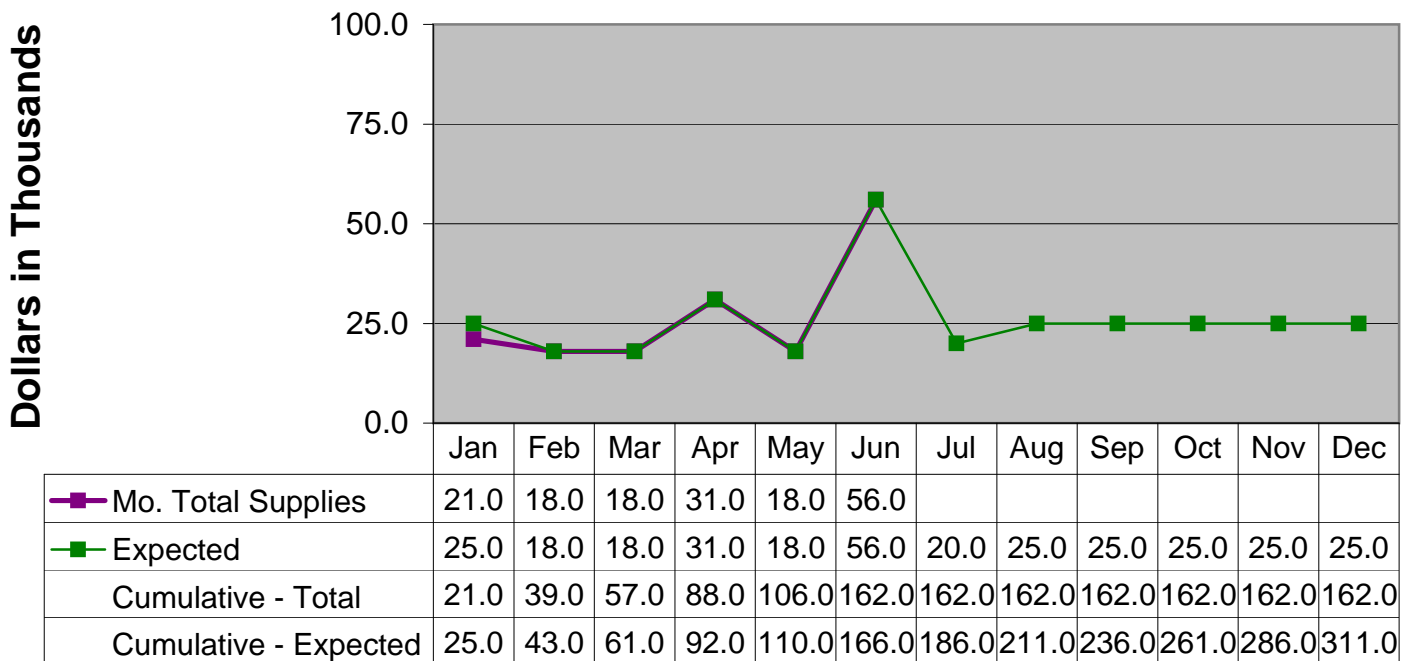


\*\* "All Other professional services" includes: OCLC, TSD Preprocessing services, Telephone System configuration and Staff Development Conference"

### Small Equipment 2009



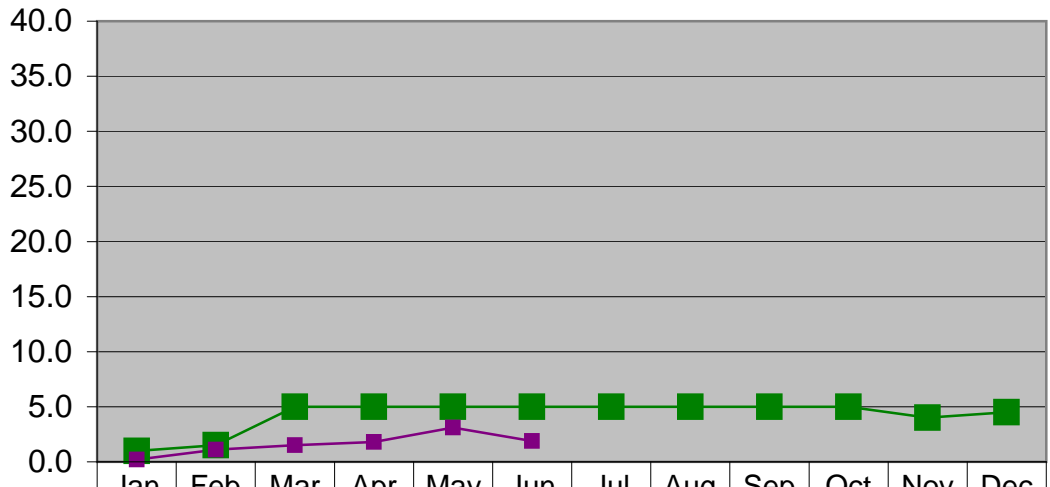
### General and Other Supplies 2009



\*\* "All Other Supplies includes Facilities, Computer Services, Janitorial and Summer Reading Supplies

## Travel & Training 2009

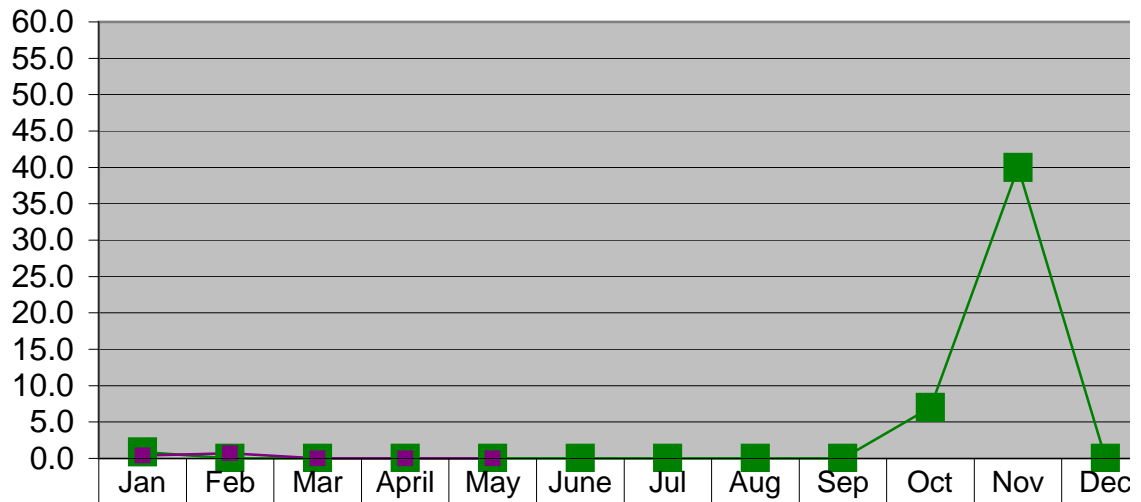
Dollars in Thousands



Expected	1.0	1.5	5.0	5.0	5.0	5.0	5.0	5.0	5.0	5.0	4.0	4.5
Month Total	0.2	1.1	1.5	1.8	3.1	1.9						
Cumulative - Total	0.2	1.3	2.8	4.6	7.7	9.6	9.6	9.6	9.6	9.6	9.6	9.6
Cumulative - Expected	1.0	2.5	7.5	12.5	17.5	22.5	27.5	32.5	37.5	42.5	46.5	51.0

## Capital Expenses 2009

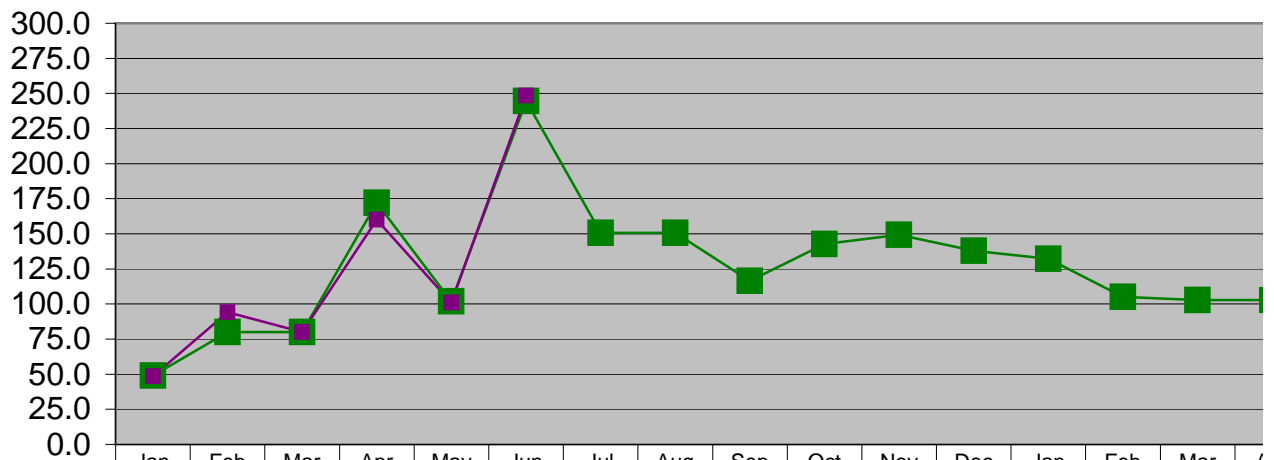
Dollars in Thousands



	Jan	Feb	Mar	April	May	June	Jul	Aug	Sep	Oct	Nov	Dec
Expected	0.9	0.0	0.0	0.0	0.0	0.0	0.0	0.0	0.0	7.0	40.0	0.0
Month Total	0.4	0.7	0.0	0.0	0.0							
Cumulative - Total	0.4	1.1	1.1	1.1	1.1	1.1	1.1	1.1	1.1	1.1	1.1	1.1
Cumulative - Expected	0.9	0.9	0.9	0.9	0.9	0.9	0.9	0.9	0.9	7.9	47.9	47.9

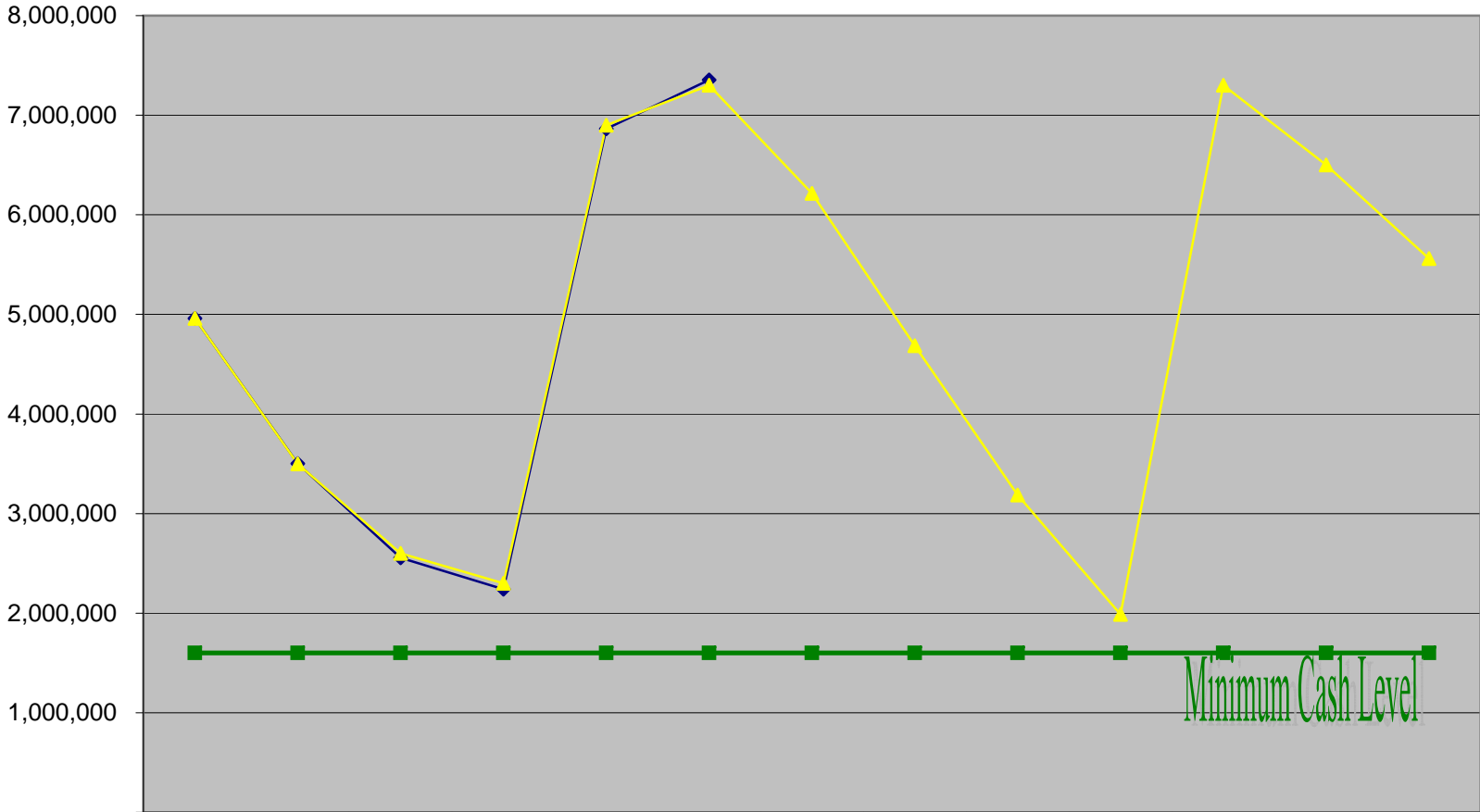
## Library Materials 2009

Dollars in Thousands



	Jan	Feb	Mar	Apr	May	Jun	Jul	Aug	Sep	Oct	Nov	Dec	Jan	Feb	Mar	Apr
Expected	49.0	80.0	80.0	172.0	102.0	244.7	150.7	150.7	116.4	142.6	149.3	138.0	132.2	105.2	102.8	102.8
Month Total	48.5	94.1	80.0	160.0	101.0	248.5										
Cumulative - Total	48.5	142.6	222.6	382.6	483.6	732.1	732.1	732.1	732.1	732.1	732.1	732.1				
Cumulative - Expected	49.0	129.0	209.0	381.0	483.0	727.7	878.4	1029.1	1145.5	1288.1	1437.4	1575.4	1707.6	1812.8	1915.6	2018.4

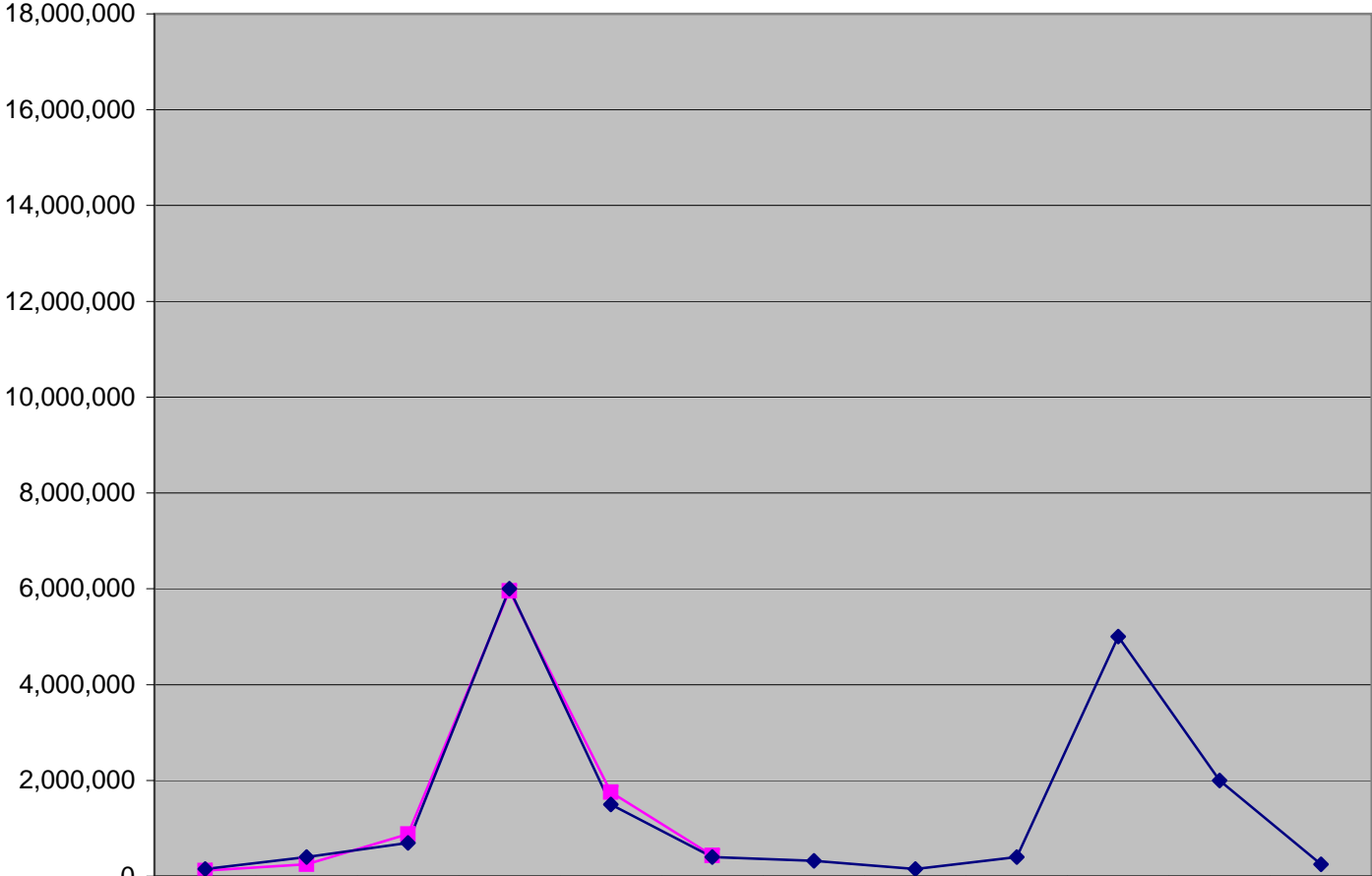
### FVRL 2009 CASH BALANCE & MINIMUM CASH LEVEL



	DEC	JAN	FEB	MAR	APR	MAY	JUN	JUL	AUG	SEP	OCT	NOV	DEC
◆ CASH BALANCE	4,959,859	3,501,883	2,554,237	2,239,636	6,863,515	7,354,595							
▲ EXPECTED CASH BAL	4,959,859	3,500,000	2,600,000	2,300,000	6,900,000	7,300,000	6,215,000	4,687,000	3,187,000	1,987,000	7,300,000	6,500,000	5,560,000
■ MINIMUM CASH LEVEL	1,600,000	1,600,000	1,600,000	1,600,000	1,600,000	1,600,000	1,600,000	1,600,000	1,600,000	1,600,000	1,600,000	1,600,000	1,600,000

**MONTHS**

### 2009 REVENUE



—■— TOTAL REVENUE RECEIVED	115,383	251,276	882,260	5,958,820	1,752,831	430,933						
—◆— EXPECTED REVENUE	150,000	400,000	700,000	6,000,000	1,500,000	400,000	320,000	150,000	400,000	5,000,000	2,000,000	250,000
REVENUE RECEIVED YEAR TO DATE	115,383	366,659	1,248,919	7,207,739	8,960,570	9,391,503						
EXPECTED REV RECEIVED YEAR TO DATE	150,000	550,000	1,250,000	7,250,000	8,750,000	9,150,000	9,470,000	9,620,000	10,020,000	15,020,000	17,020,000	17,270,000