

# Fort Vancouver Regional Library District

## Statement Of Revenue

For the Year Ending July 2008 (With year-to-date totals)

	2008 Budget Amended June 2008	July, 2008 Revenues	All Revenue Received thru July, 2008	Year -to - Date Annual Budget Percent	
<b>Property Taxes</b>					
311.10	Property Taxes - Clark	\$14,803,342	\$70,829	\$7,961,472	53.78%
311.10	Property Taxes - Skamania	\$405,315	\$3,924	\$236,492	58.35%
311.10	Property Taxes - Klickitat	\$686,864	\$6,367	\$421,894	61.42%
311.10	Property Taxes - Cowlitz	\$165,912	\$2,153	\$90,866	54.77%
	<b>Total Property Taxes</b>	<b><u>16,061,433</u></b>	<b><u>\$83,272</u></b>	<b><u>8,710,724</u></b>	<b><u>54.23%</u></b>
<b>Other Taxes</b>					
311.11	Other General Tax	\$100,000	\$5,371	\$40,495	40.50%
318.20	Leasehold Excise Tax	\$50,000	\$1,000	\$25,880	51.76%
	<b>Total Other Taxes</b>	<b><u>\$150,000</u></b>	<b><u>\$6,371</u></b>	<b><u>\$66,375</u></b>	<b><u>44.25%</u></b>
<b>Intergovernmental, Grants &amp; Contracts</b>					
332.00	Federal in-lieu of Taxes	\$2,500	\$0	\$6,255	250.20%
333.00	Readiness to Learn Grant	\$0	\$0	\$17,170	100.00%
335.05	State Forest Boards	\$350,000	\$0	\$32,927	9.41%
338.72	Contract - Three Creeks	\$0	\$0	\$0	100.00%
338.72	CONTRACTS - Intergovernmental	\$0	\$0	\$0	100.00%
338.72	Yale Valley Library Dist	\$55,965	\$0	\$0	0.00%
338.72	INET City of Vancouver (PEG)	\$40,000	\$0	\$43,008	107.52%
338.72	Contracts - Clark County Jail	\$500	\$0	\$1,500	300.00%
338.72	Contract - City of Camas	\$15,000	\$0	\$6,255	41.70%
338.72	Pass-Thru - City of Camas	\$7,100	\$0	\$0	0.00%
338.72	Contract - SW Wash Medical Center	\$5,000	\$0	\$2,908	58.16%
338.72	Pass-thru - SW Wash Medical Center	\$4,700	\$0	\$0	0.00%
338.72	Pass-thru - VLCFA	\$200,000	\$0	\$0	0.00%
338.72	CONTRACTS-Foundation	\$275,000	\$57,712	\$224,277	81.56%
	<b>Total Intergovernmental, Grants &amp; Contracts</b>	<b><u>\$955,765</u></b>	<b><u>\$57,712</u></b>	<b><u>\$334,300</u></b>	<b><u>34.98%</u></b>
<b>Charges for Services</b>					
341.60	Equipment Use Fees	\$25,000	\$1,923	\$13,670	54.68%
347.21	Non-Resident Borrower Fee	\$3,000	\$475	\$3,776	125.87%
340.10	Misc Charge for Services	\$0	\$0	\$0	0.00%
347.90	Lost / Damaged Material Fee	\$30,000	\$3,893	\$26,536	88.45%
359-70	Collection Agency Referral Fee	\$17,000	\$960	\$7,107	41.81%
	<b>Total Charges for Services</b>	<b><u>\$75,000</u></b>	<b><u>\$7,251</u></b>	<b><u>\$51,089</u></b>	<b><u>68.12%</u></b>
<b>Miscellaneous</b>					
361.11	Investment Interest	\$250,000	\$19,093	\$148,813	59.53%
367.11	Contract - Private Grants	\$0	\$0	\$0	100.00%
367.00	Gifts/Contributions	\$2,500	\$332	\$2,169	86.76%
367.00	Foundation Grants / Donations	\$15,000	\$3,654	\$14,457	96.38%
369.40	Insurance Reimbursements	\$0	\$739	\$1,489	100.00%
369.90	Miscellaneous	\$10,000	\$6,362	\$12,600	126.00%
369.90	Postage Contributions	\$0	\$0	\$0	100.00%
369.90	Other Miscellaneous - E-Rate	\$50,000	\$0	\$2,495	4.99%
395.00	Sale of Assets	\$5,000	\$4,255	\$8,877	177.54%
	<b>Total Miscellaneous</b>	<b><u>\$332,500</u></b>	<b><u>\$34,435</u></b>	<b><u>\$190,900</u></b>	<b><u>57.41%</u></b>
		<b><u>\$17,574,698</u></b>	<b><u>\$189,041</u></b>	<b><u>\$9,353,388</u></b>	<b><u>53.22%</u></b>

## Fort Vancouver Regional Library District

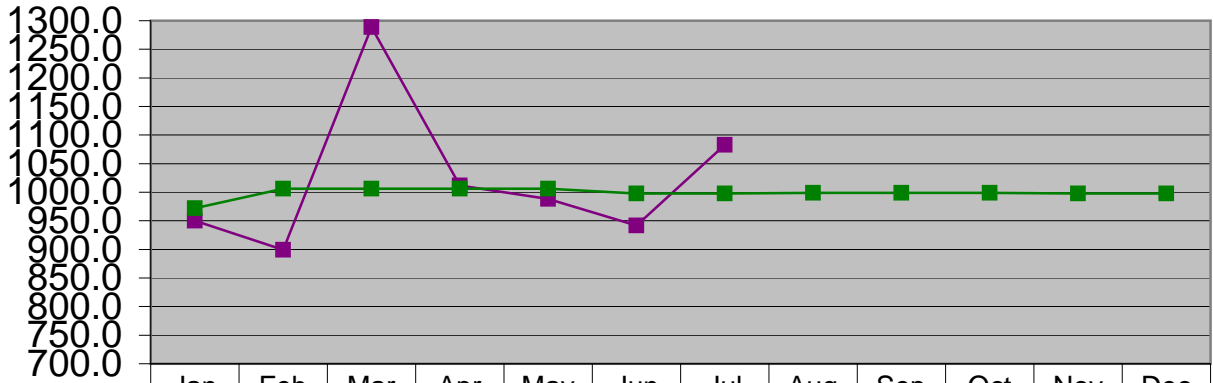
### Statement of Expenses

For the Year Ending July 2008 (With year-to-date totals)

<u>Bars</u>	<u>Description</u>	2008 Budget (Amended June 2008)	July 2008 Expenditures	Year-to-Date Totals thru July 2008	Year to Date Annual Budget Percentage
<b>Personnel Services</b>					
572.00	Wages & Benefits	11,984,589	1,082,930	7,134,123	59.53%
572.28	Unemployment Expense	1,000	0	6,681	668.10%
		<b>11,985,589</b>	<b>1,082,930</b>	<b>7,140,804</b>	<b>59.58%</b>
<b>Supplies</b>					
572.30	Supplies	558,532	62,483	312,871	56.02%
572.35 & 38	Computer Supplies / Small Equipment	720,128	284,846	414,105	57.50%
		<b>1,278,660</b>	<b>347,329</b>	<b>726,976</b>	<b>56.85%</b>
<b>Library Books / Materials</b>					
572.34	Library Books & Materials	1,694,160	128,182	833,995	49.23%
572.39	Electronic Resources	301,500	9,212	189,706	62.92%
		<b>1,995,660</b>	<b>137,394</b>	<b>1,023,701</b>	<b>51.30%</b>
<b>Other Services / Charges</b>					
572.41	Professional Services	614,333	56,219	306,988	49.97%
572.42	Communications	753,160	73,277	475,049	63.07%
572.43	Training / Travel	139,457	13,017	108,072	77.49%
572.44	Advertising	39,000	2,699	13,559	34.77%
572.45	Rentals / Leases	382,539	30,361	235,438	61.55%
572.46	Insurance	110,000	0	83,170	75.61%
572.47	Utilities	275,025	16,734	133,337	48.48%
572.48	Repairs & Maintenance	392,698	20,421	215,943	54.99%
572.49	Misc / Dues / Printing / Other	174,025	9,437	88,936	51.11%
572.50	Intergovernmental Services	14,400	344	11,569	80.34%
		<b>2,894,637</b>	<b>222,509</b>	<b>1,672,061</b>	<b>57.76%</b>
<b>Capital Outlay</b>					
572.62	Buildings / Non-Owned	87,300	10,994	47,047	53.89%
594.62	Buildings / Owned	5,000	1,535	2,785	55.69%
594.64	Machinery & Equipment	167,950	649	45,765	27.25%
		<b>260,250</b>	<b>13,178</b>	<b>95,596</b>	<b>36.73%</b>
<b>Debt Services</b>					
591.70	Debt Service Principal	59,671	31,829	62,843	105.32%
592.80	Debt Service Interest	29,472	12,743	26,299	89.23%
		<b>89,143</b>	<b>44,572</b>	<b>89,142</b>	<b>100.00%</b>
<b>Contracting Libraries</b>					
	Contract Libraries Expenditures	11,500	1,473	14,696	127.79%
		<b>11,500</b>	<b>1,473</b>	<b>14,696</b>	<b>127.79%</b>
<b>Grand Total:</b>		<b>\$ 18,515,439</b>	<b>\$ 1,849,385</b>	<b>\$ 10,762,976</b>	<b>58.13%</b>

## Personnel 2008

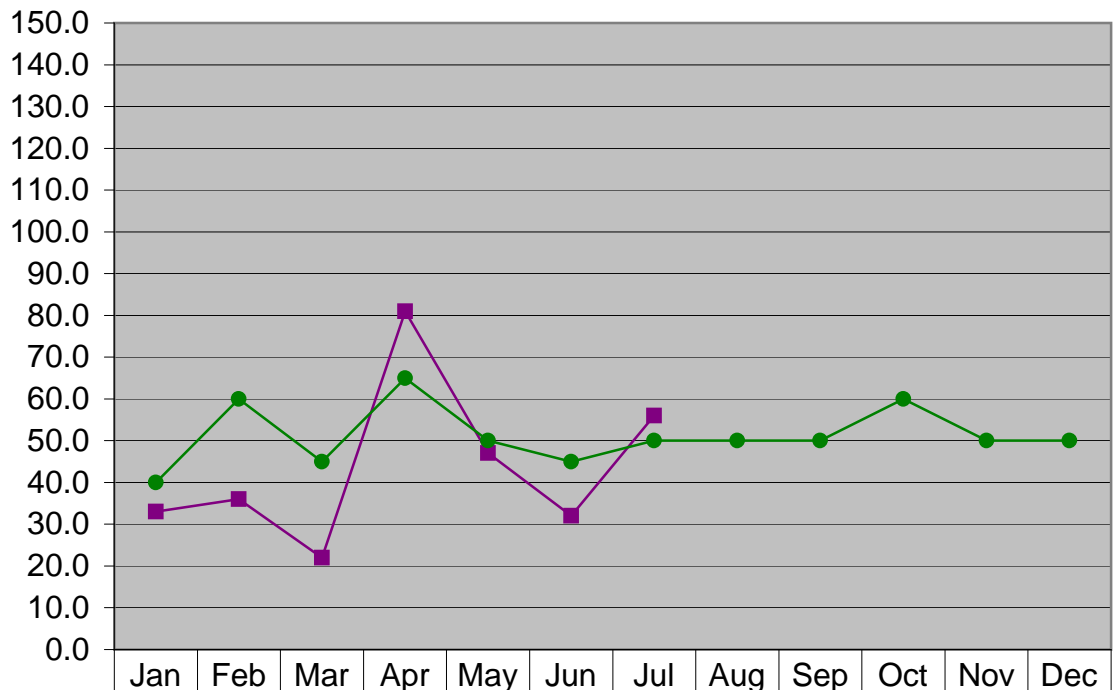
Dollars in Thousands



Month Total	950	899	1289	1012	988	942	1083					
Expected Expense	972	1006	1006	1006	1006	998	998	999	999	999	998	998
Cumulative - Total	950	1849	3138	4150	5138	6080	7163	7163	7163	7163	7163	7163
Cumulative - Expected	972	1978	2984	3990	4996	5994	6992	7991	8990	9989	10987	11985

## Professional Services 2008

Dollars in Thousands

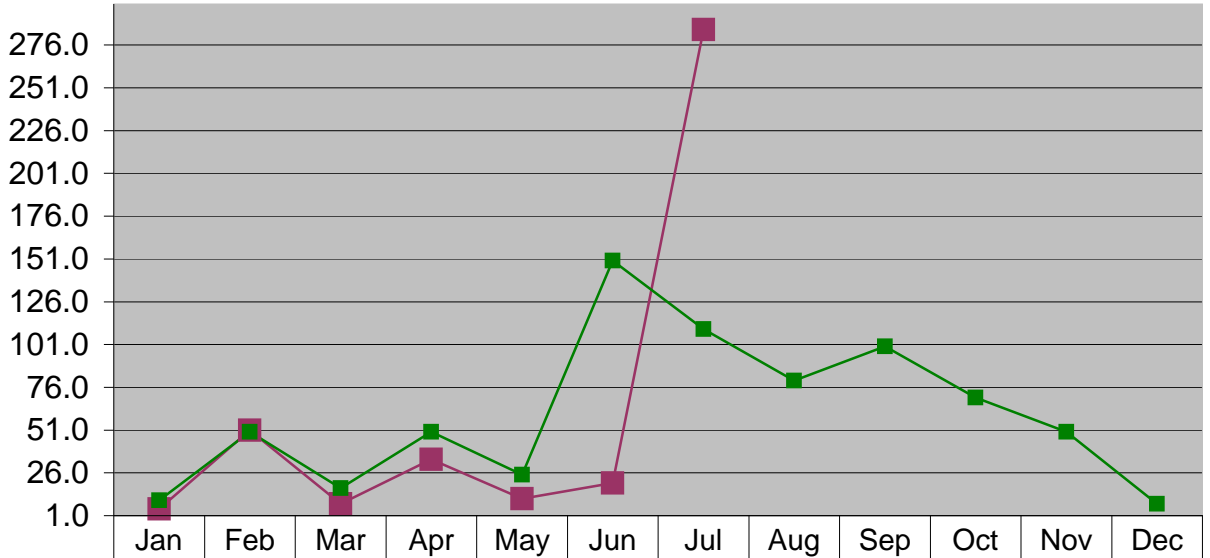


Month Total	33	36	22	81	47	32	56					
Expected Expense	40	60	45	65	50	45	50	50	50	60	50	50
Cumulative - Total	33	69	91	172	219	251	307	307	307	307	307	307
Cumulative - Expected	40	100	145	210	260	305	355	405	455	515	565	615

\*\* "All Other professional services" includes: OCLC, TSD Preprocessing services, Telephone System configuration and Staff Development Conference"

## Small Equipment 2008

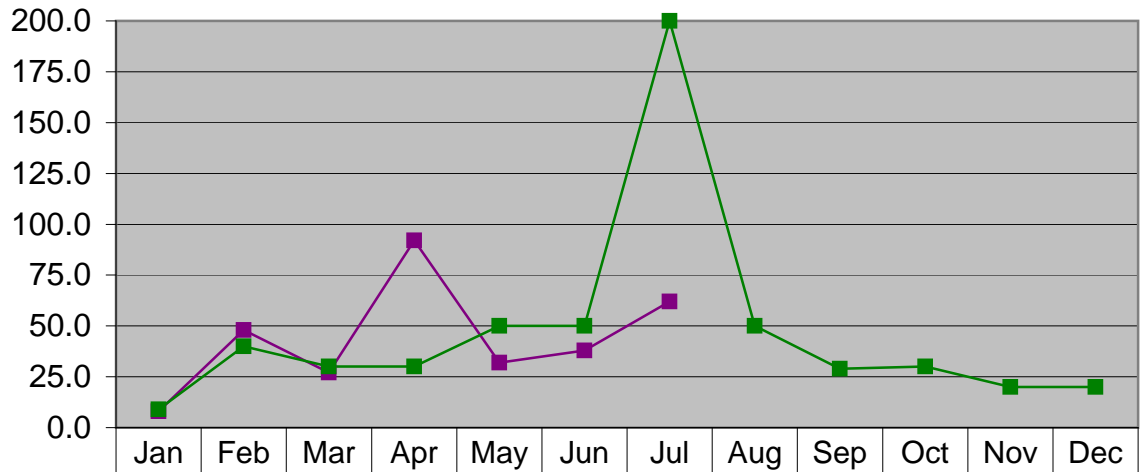
Dollars in Thousands



Month Total	5.0	51.0	8.0	34.0	11.0	20.0	285.0					
Expected	10.0	50.0	17.0	50.0	25.0	150.0	110.0	80.0	100.0	70.0	50.0	8.0
Cumulative - Total	5.0	56.0	64.0	98.0	109.0	129.0	414.0	414.0	414.0	414.0	414.0	414.0
Cumulative - Expected	10.0	60.0	77.0	127.0	152.0	302.0	412.0	492.0	592.0	662.0	712.0	720.0

## General and Other Supplies 2008

Dollars in Thousands

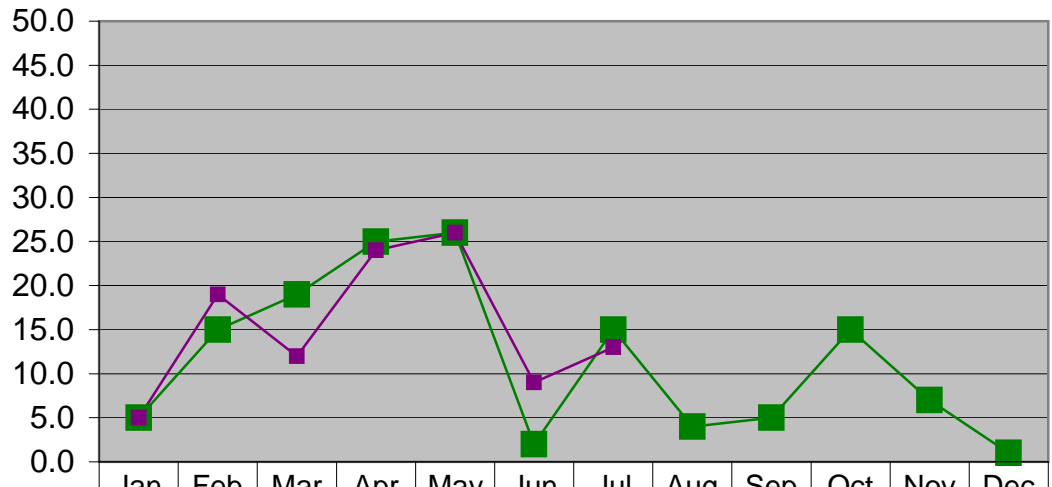


Total Supplies	8.0	48.0	27.0	92.0	32.0	38.0	62.0					
Expected	9.0	40.0	30.0	30.0	50.0	50.0	200.0	50.0	29.0	30.0	20.0	20.0
Cumulative - Total	8.0	56.0	83.0	175.0	207.0	245.0	307.0	307.0	307.0	307.0	307.0	307.0
Cumulative - Expected	9.0	49.0	79.0	109.0	159.0	209.0	409.0	459.0	488.0	518.0	538.0	558.0

\*\* "All Other Supplies includes Facilities, Computer Services, Janitorial and Summer Reading Supplies

## Travel & Training 2008

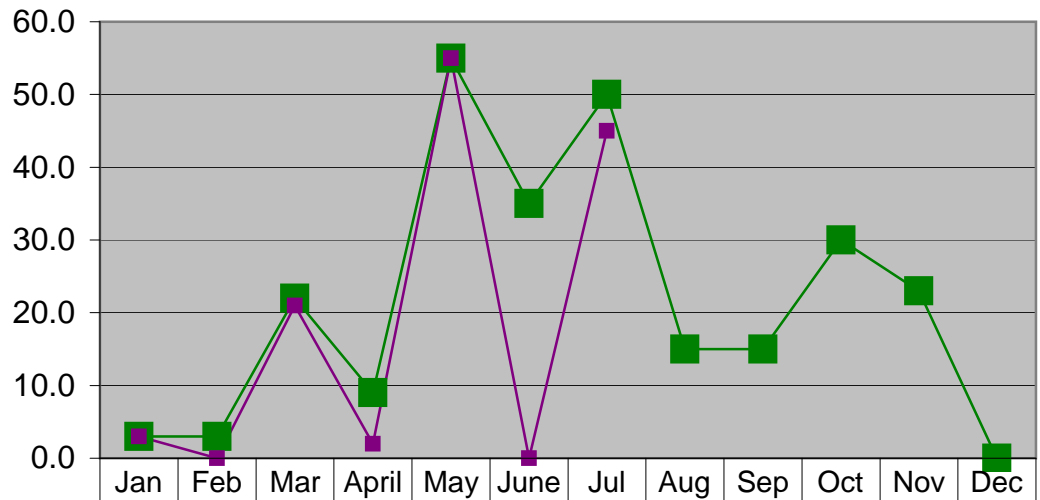
Dollars in Thousands



	Jan	Feb	Mar	Apr	May	Jun	Jul	Aug	Sep	Oct	Nov	Dec
Expected	5	15	19	25	26	2	15	4	5	15	7	1
Month Total	5	19	12	24	26	9	13					
Cumulative - Total	5	24	36	60	86	95	108	108	108	108	108	108
Cumulative - Expected	5	20	39	64	90	92	107	111	116	131	138	139

## Capital Expenses 2008

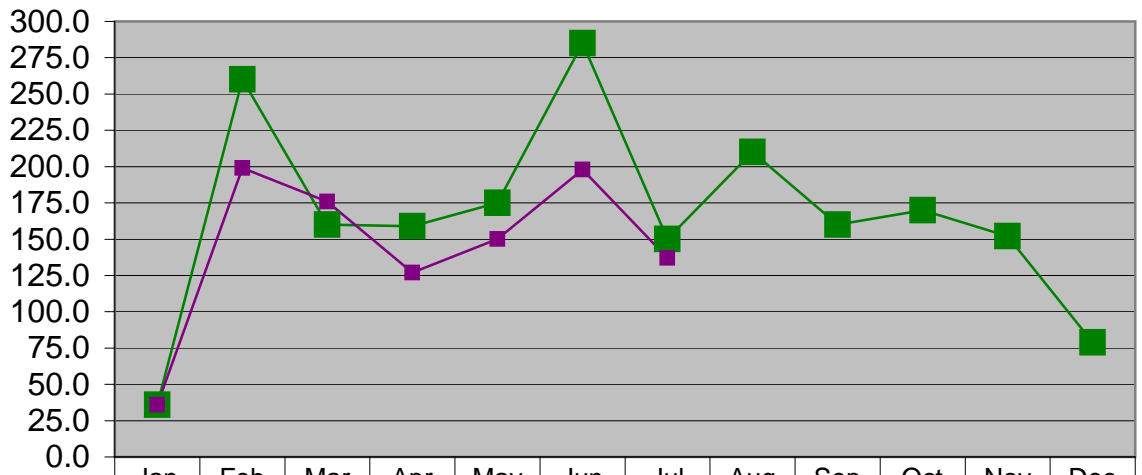
Dollars in Thousands



	Jan	Feb	Mar	April	May	June	Jul	Aug	Sep	Oct	Nov	Dec
Expected	3	3	22	9	55	35	50	15	15	30	23	0
Month Total	3	0	21	2	55	0	45					
Cumulative - Total	3	3	24	26	81	81	126	126	126	126	126	126
Cumulative - Expected	3	6	28	37	92	127	177	192	207	237	260	260

## Library Materials 2008

Dollars in Thousands



	Jan	Feb	Mar	Apr	May	Jun	Jul	Aug	Sep	Oct	Nov	Dec
Expected	36.0	260.0	160.0	159.0	175.0	285.0	150.0	210.0	160.0	170.0	152.0	79.0
Month Total	36.0	199.0	176.0	127.0	150.0	198.0	137.0					
Cumulative - Total	39.0	238.0	414.0	541.0	691.0	889.0	1026.0	1026.0	1026.0	1026.0	1026.0	1026.0
Cumulative - Expected	36.0	296.0	456.0	615.0	790.0	1075.0	1225.0	1435.0	1595.0	1765.0	1917.0	1996.0