

Fort Vancouver Regional Library District

Statement Of Revenue

For the Year Ending February 2008 (With year-to-date totals)

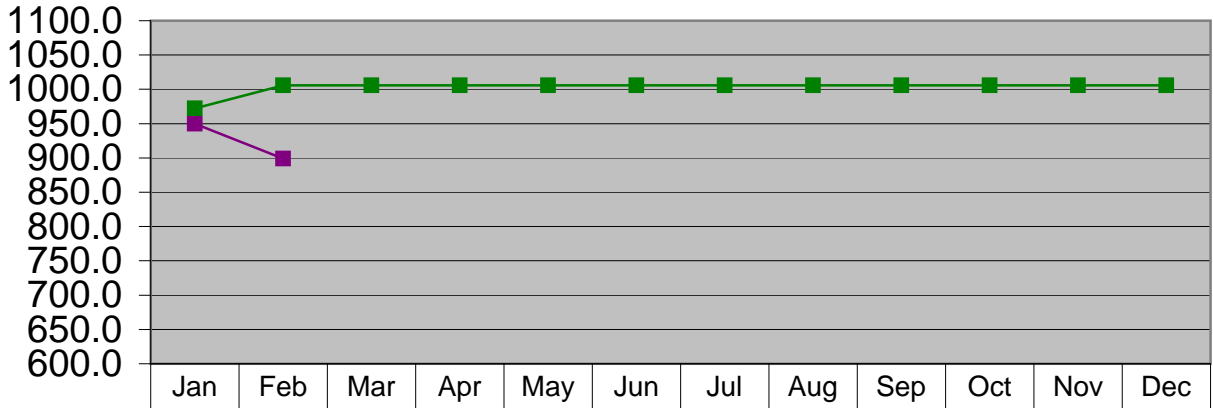
		2008 Budget Amended February 2008	February, 2008 Revenues	All Revenue Received thru February, 2008	Year -to - Date Annual Budget Percent
Property Taxes					
311.10	Property Taxes - Clark	\$14,830,636	\$345,036	\$388,715	2.62%
311.10	Property Taxes - Cowlitz	\$163,566	\$1,208	\$2,021	1.24%
311.10	Property Taxes - Klickitat	\$709,893	\$4,163	\$11,948	1.68%
311.10	Property Taxes - Skamania	\$405,728	\$2,176	\$4,536	1.12%
	Total Property Taxes	<u>16,109,823</u>	<u>\$352,583</u>	<u>407,220</u>	<u>2.53%</u>
Other Taxes					
311.11	Other General Tax	\$100,000	\$0	\$3,776	3.78%
318.20	Leasehold Excise Tax	\$50,000	\$0	\$11,625	23.25%
	Total Other Taxes	<u>\$150,000</u>	<u>\$0</u>	<u>\$15,401</u>	<u>10.27%</u>
Intergovernmental, Grants & Contracts					
332.00	Federal in-lieu of Taxes	\$2,500	\$0	\$0	0.00%
333.00	Readiness to Learn Grant	\$0	\$11,340	\$11,500	100.00%
335.05	State Forest Boards	\$350,000	\$4	\$6,511	1.86%
338.72	Contract - Three Creeks	\$0	\$0	\$0	100.00%
338.72	CONTRACTS - Intergovernmental	\$0	\$0	\$0	100.00%
338.72	CONTRACTS - Yale Valley Library Dist	\$55,965	\$0	\$0	0.00%
338.72	INTERGOVERNMENTAL - INET City of	\$40,000	\$0	\$43,008	107.52%
338.72	Contracts - Clark County Jail	\$500	\$1,500	\$1,500	300.00%
338.72	Contract - City of Camas	\$15,000	\$0	\$1,845	12.30%
338.72	Pass-Thru - City of Camas	\$7,100	\$0	\$0	0.00%
338.72	Contract - SW Wash Medical Center	\$5,000	\$0	\$339	6.78%
338.72	Pass-thru - SW Wash Medical Center	\$4,700	\$0	\$0	0.00%
338.72	Pass-thru - VLCFA	\$200,000	\$0	\$0	0.00%
338.72	CONTRACTS-Foundation	\$275,000	\$33,995	\$52,696	19.16%
	Total Intergovernmental, Grants & Contracts	<u>\$955,765</u>	<u>\$46,840</u>	<u>\$117,399</u>	<u>12.28%</u>
Charges for Services					
341.60	Equipment Use Fees	\$25,000	\$1,918	\$3,888	15.55%
347.21	Non-Resident Borrower Fee	\$3,000	\$523	\$998	33.27%
340.10	Misc Charge for Services	\$0	\$0	\$0	0.00%
347.90	Lost / Damaged Material Fee	\$30,000	\$4,595	\$8,561	28.54%
359-70	Collection Agency Referral Fee	\$17,000	\$1,150	\$1,950	11.47%
	Total Charges for Services	<u>\$75,000</u>	<u>\$8,186</u>	<u>\$15,397</u>	<u>20.53%</u>
Miscellaneous					
361.11	Investment Interest	\$250,000	\$22,864	\$54,834	21.93%
367.11	Contract - Private Grants	\$0	\$0	\$0	100.00%
367.00	Gifts/Contributions	\$2,500	\$227	\$580	23.20%
367.00	Foundation Grants / Donations	\$15,000	\$348	\$4,249	28.33%
369.40	Insurance Reimbursements	\$0	\$0	\$0	100.00%
369.90	Miscellaneous	\$10,000	\$1,661	\$1,810	18.10%
369.90	Postage Contributions	\$0	\$0	\$0	100.00%
369.90	Other Miscellaneous - E-Rate	\$50,000	\$0	\$0	0.00%
395.00	Sale of Assets	\$5,000	\$964	\$2,251	45.02%
	Total Miscellaneous	<u>\$332,500</u>	<u>\$26,065</u>	<u>\$63,724</u>	<u>19.17%</u>
		<u>\$17,623,088</u>	<u>\$433,674</u>	<u>\$619,141</u>	<u>3.51%</u>

Fort Vancouver Regional Library District
 Statement of Expenses
 For the Year Ending February 2008 (With year-to-date totals)

<u>Bars</u>	<u>Description</u>	2008 Budget (Amended February 2008)	February 2008 Expenditures	Year-to-Date Totals thru February 2008	Year to Date Annual Budget Percentage
Personnel Services					
572.00	Wages & Benefits	12,042,539	898,488	1,819,454	15.11%
572.28	Unemployment Expense	1,000	0	1,508	150.80%
		12,043,539	898,488	1,820,962	15.12%
Supplies					
572.30	Supplies	408,532	47,779	55,726	13.64%
572.35 & 38	Computer Supplies / Small Equipment	677,128	51,297	56,452	8.34%
		1,085,660	99,076	112,178	10.33%
Library Books / Materials					
572.34	Library Books & Materials	1,694,160	83,346	102,040	6.02%
572.39	Electronic Resources	301,500	115,817	132,830	44.06%
		1,995,660	199,163	234,870	11.77%
Other Services / Charges					
572.41	Professional Services	604,333	35,886	68,804	11.39%
572.42	Communications	753,160	59,141	163,802	21.75%
572.43	Training / Travel	139,457	18,923	24,392	17.49%
572.44	Advertising	39,000	1,013	3,605	9.24%
572.45	Rentals / Leases	382,539	40,208	83,793	21.90%
572.46	Insurance	110,000	0	310	0.28%
572.47	Utilities	275,025	21,754	41,935	15.25%
572.48	Repairs & Maintenance	392,698	63,624	86,439	22.01%
572.49	Misc / Dues / Printing / Other	174,025	8,897	31,357	18.02%
572.50	Intergovernmental Services	14,400	7,358	16,002	111.13%
		2,884,637	256,804	520,439	18.04%
Capital Outlay					
572.62	Buildings / Non-Owned	57,300	0	3,122	5.45%
594.62	Buildings / Owned	5,000	0	0	0.00%
594.64	Machinery & Equipment	20,000	0	0	0.00%
		82,300	0	3,122	3.79%
Debt Services					
591.70	Debt Service Principal	59,671	0	31,015	51.98%
592.80	Debt Service Interest	29,472	0	13,556	46.00%
		89,143	0	44,571	50.00%
Contracting Libraries					
	Contract Libraries Expenditures	11,800	619	1,001	8.48%
		11,800	619	1,001	8.48%
Grand Total:		\$ 18,192,739	\$ 1,454,150	\$ 2,737,142	15.05%

Personnel 2008

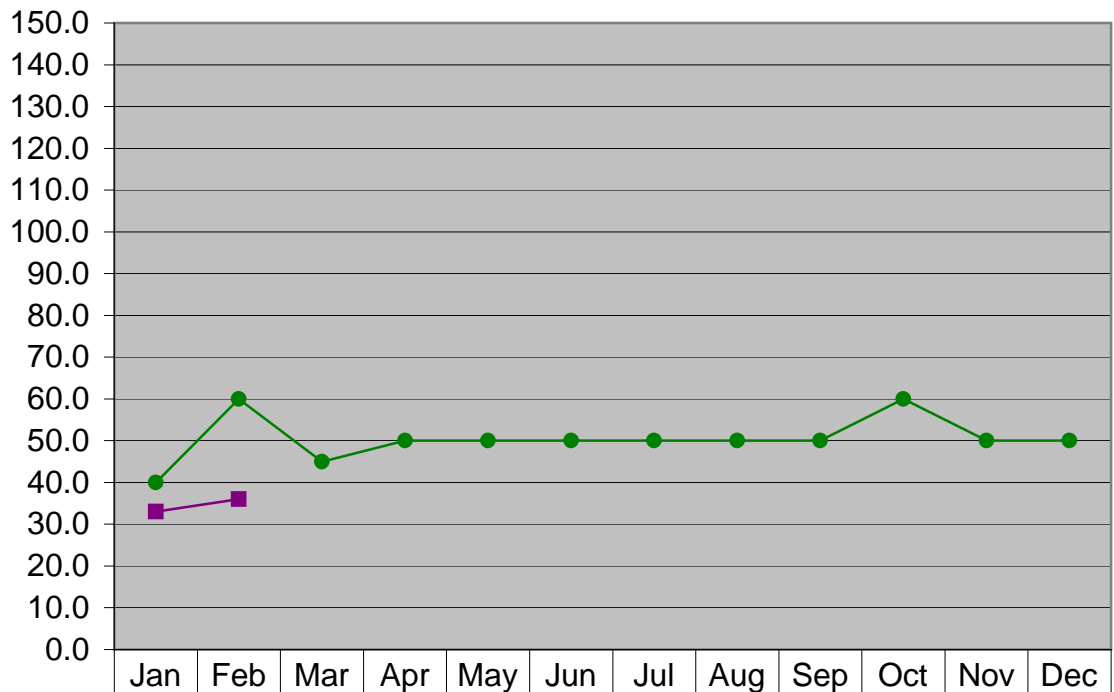
Dollars in Thousands



Month Total	950	899										
Expected Expense	972	1006	1006	1006	1006	1006	1006	1006	1006	1006	1006	1006
Cumulative - Total	950	1849	1849	1849	1849	1849	1849	1849	1849	1849	1849	1849
Cumulative - Expected	972	1978	2984	3990	4996	6002	7008	8014	9020	10026	11032	12038

Professional Services 2008

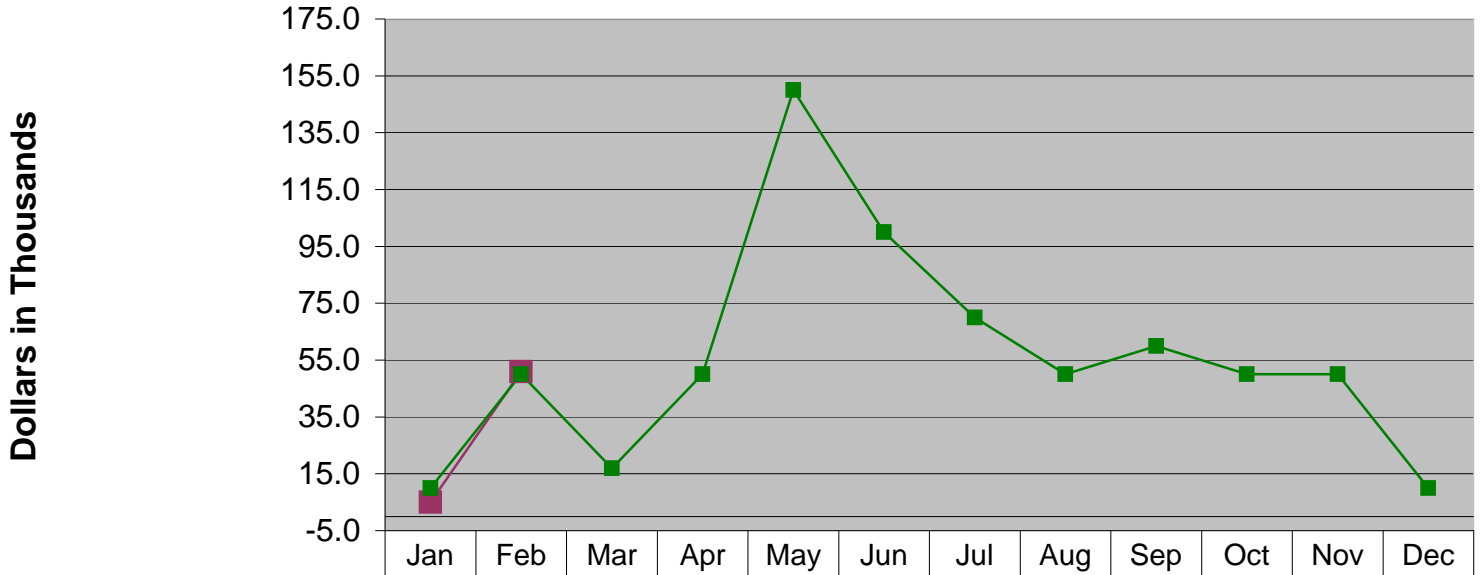
Dollars in Thousands



Month Total	33	36										
Expected Expense	40	60	45	50	50	50	50	50	50	60	50	50
Cumulative - Total	33	69	69	69	69	69	69	69	69	69	69	69
Cumulative - Expected	40	100	145	195	245	295	345	395	445	505	555	605

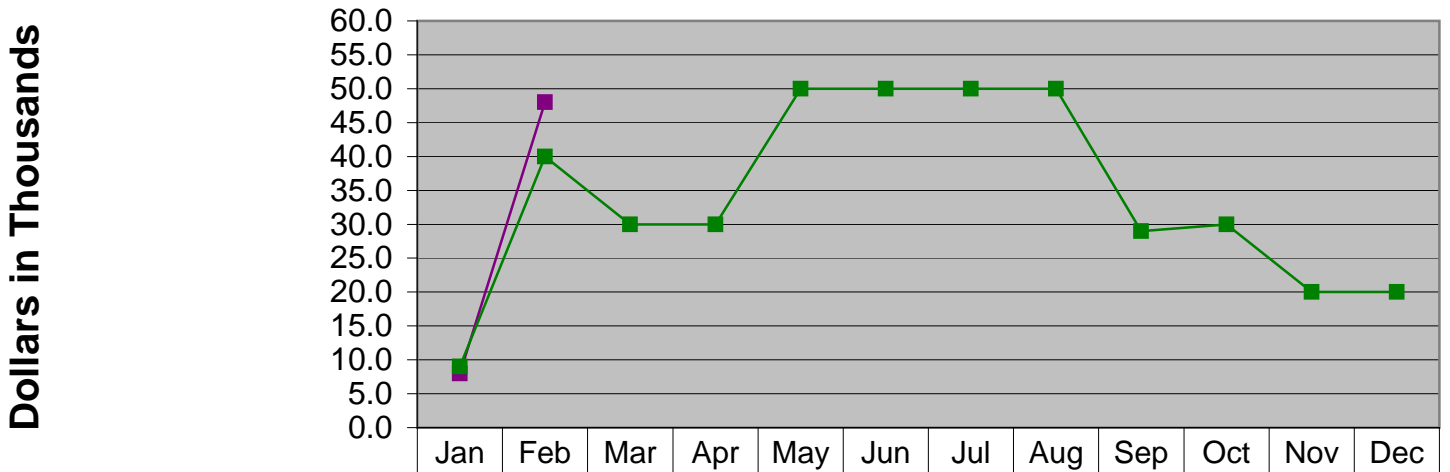
** "All Other professional services" includes: OCLC, TSD Preprocessing services, Telephone System configuration and Staff Development Conference"

Small Equipment 2008



Cumulative - Total	5.0	56.0	56.0	56.0	56.0	56.0	56.0	56.0	56.0	56.0	56.0	56.0
Cumulative - Expected	10.0	60.0	77.0	127.0	277.0	377.0	447.0	497.0	557.0	607.0	657.0	667.0

General and Other Supplies 2008

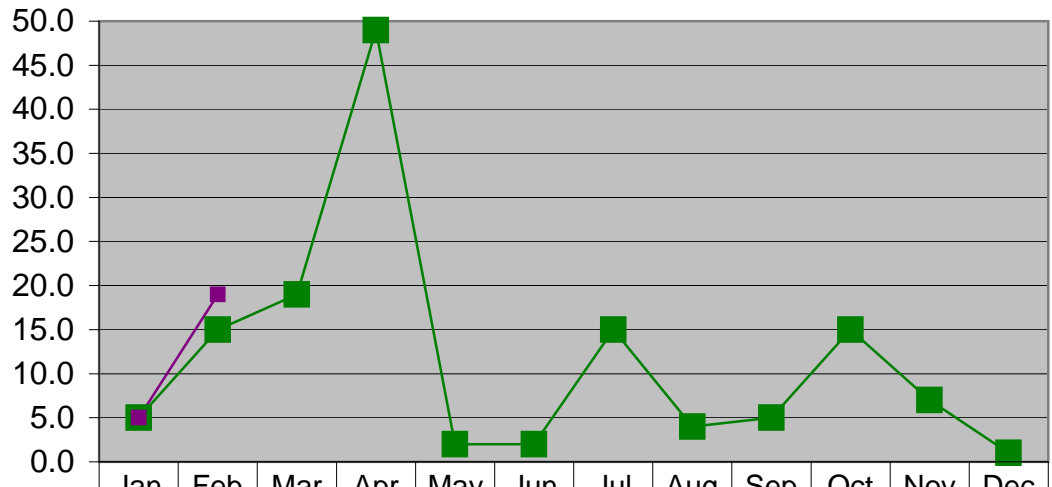


Cumulative - Total	8.0	56.0	56.0	56.0	56.0	56.0	56.0	56.0	56.0	56.0	56.0	56.0
Cumulative - Expected	9.0	49.0	79.0	109.0	159.0	209.0	259.0	309.0	338.0	368.0	388.0	408.0

** "All Other Supplies includes Facilities, Computer Services, Janitorial and Summer Reading Supplies

Travel & Training 2008

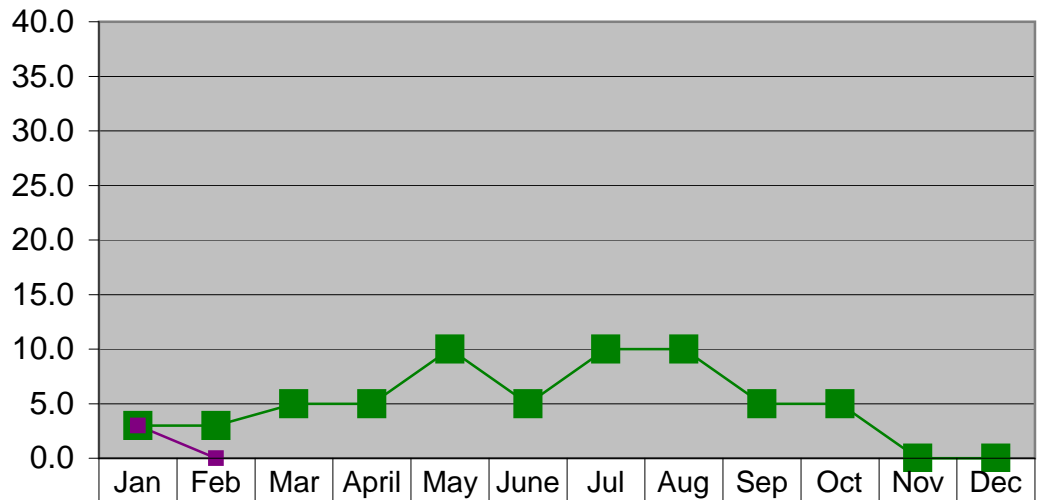
Dollars in Thousands



	Jan	Feb	Mar	Apr	May	Jun	Jul	Aug	Sep	Oct	Nov	Dec
Expected	5	15	19	49	2	2	15	4	5	15	7	1
Month Total	5	19										
Cumulative - Total	5	24	24	24	24	24	24	24	24	24	24	24
Cumulative - Expected	5	20	39	88	90	92	107	111	116	131	138	139

Capital Expenses 2008

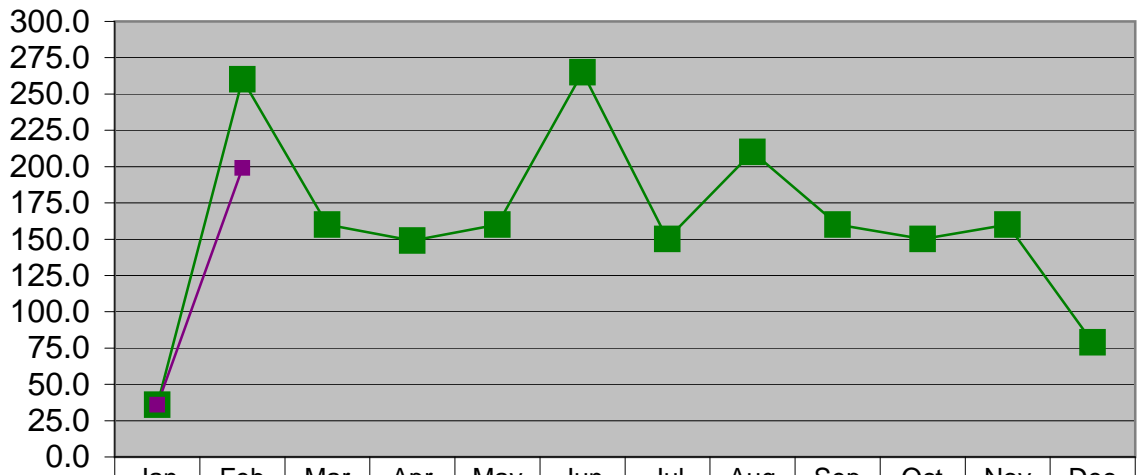
Dollars in Thousands



Expected	3	3	5	5	10	5	10	10	5	5	0	0
Month Total	3	0										
Cumulative - Total	3	3	3	3	3	3	3	3	3	3	3	3
Cumulative - Expected	3	6	11	16	26	31	41	51	56	61	61	61

Library Materials 2008

Dollars in Thousands



Expected	36.0	260.0	160.0	149.0	160.0	265.0	150.0	210.0	160.0	150.0	160.0	79.0
Month Total	36.0	199.0										
Cumulative - Total	39.0	238.0	238.0	238.0	238.0	238.0	238.0	238.0	238.0	238.0	238.0	238.0
Cumulative - Expected	36.0	296.0	456.0	605.0	765.0	1030.0	1180.0	1390.0	1550.0	1700.0	1860.0	1939.0