

**Fort Vancouver Regional Library District**  
Statement Of Revenue  
For the Year Ending October, 2008 (With year-to-date totals)

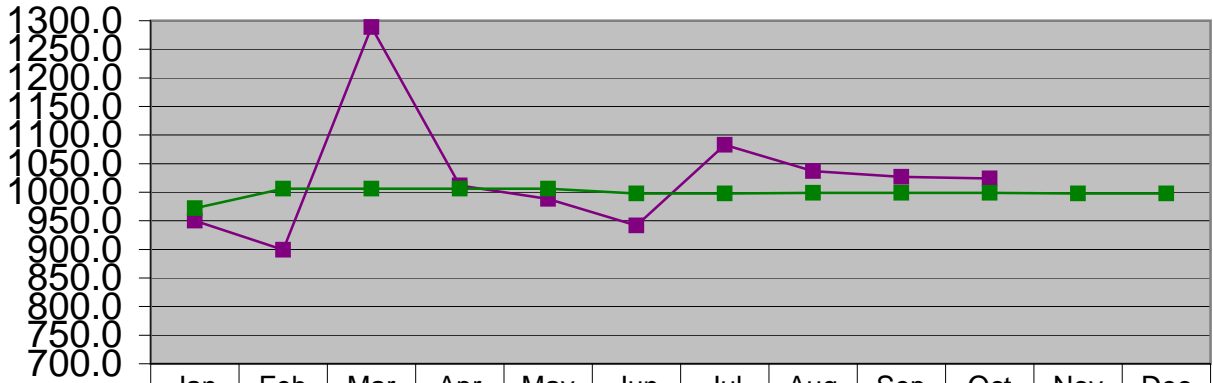
	2008 Budget Amended June 2008	October, 2008 Revenues	All Revenue Received thru October, 2008	Year -to - Date Annual Budget Percent	
<b>Property Taxes</b>					
311.10	Property Taxes - Clark	\$14,803,342	\$4,256,353	\$12,521,475	84.59%
311.10	Property Taxes - Skamania	\$405,315	\$12,432	\$259,858	64.11%
311.10	Property Taxes - Klickitat	\$686,864	\$36,223	\$471,217	68.60%
311.10	Property Taxes - Cowlitz	\$165,912	\$3,203	\$95,901	57.80%
	<b>Total Property Taxes</b>	<b><u>16,061,433</u></b>	<b><u>\$4,308,211</u></b>	<b><u>13,348,451</u></b>	<b><u>83.11%</u></b>
<b>Other Taxes</b>					
311.11	Other General Tax	\$100,000	\$0	\$63,530	63.53%
318.20	Leasehold Excise Tax	\$50,000	\$0	\$31,566	63.13%
	<b>Total Other Taxes</b>	<b><u>\$150,000</u></b>	<b><u>\$0</u></b>	<b><u>\$95,096</u></b>	<b><u>63.40%</u></b>
<b>Intergovernmental, Grants &amp; Contracts</b>					
332.00	Federal in-lieu of Taxes	\$2,500	\$0	\$6,255	250.20%
333.00	Readiness to Learn Grant	\$0	\$5,670	\$22,840	100.00%
335.05	State Forest Boards	\$350,000	\$925	\$63,236	18.07%
338.72	Contract - Three Creeks	\$0	\$0	\$0	100.00%
338.72	CONTRACTS - Intergovernmental	\$0	\$0	\$0	100.00%
338.72	Yale Valley Library Dist	\$55,965	\$0	\$55,965	100.00%
338.72	INET City of Vancouver (PEG)	\$40,000	\$0	\$43,008	107.52%
338.72	Contracts - Clark County Jail	\$500	\$0	\$1,500	300.00%
338.72	Contract - City of Camas	\$15,000	\$131	\$7,913	52.75%
338.72	Pass-Thru - City of Camas	\$7,100	\$0	\$0	0.00%
338.72	Contract - SW Wash Medical Center	\$5,000	\$0	\$2,908	58.16%
338.72	Pass-thru - SW Wash Medical Center	\$4,700	\$0	\$0	0.00%
338.72	Pass-thru - VLCFA	\$200,000	\$0	\$0	0.00%
338.72	CONTRACTS-Foundation	\$275,000	\$690	\$253,814	92.30%
	<b>Total Intergovernmental, Grants &amp; Contracts</b>	<b><u>\$955,765</u></b>	<b><u>\$7,416</u></b>	<b><u>\$457,439</u></b>	<b><u>47.86%</u></b>
<b>Charges for Services</b>					
341.60	Equipment Use Fees	\$25,000	\$1,809	\$19,266	77.06%
347.21	Non-Resident Borrower Fee	\$3,000	\$499	\$5,130	171.00%
340.10	Misc Charge for Services	\$0	\$0	\$0	0.00%
347.90	Lost / Damaged Material Fee	\$30,000	\$4,369	\$38,312	127.71%
359-70	Collection Agency Referral Fee	\$17,000	\$1,030	\$10,137	59.63%
	<b>Total Charges for Services</b>	<b><u>\$75,000</u></b>	<b><u>\$7,707</u></b>	<b><u>\$72,845</u></b>	<b><u>97.13%</u></b>
<b>Miscellaneous</b>					
361.11	Investment Interest	\$250,000	\$6,090	\$173,839	69.54%
367.11	Contract - Private Grants	\$0	\$0	\$0	100.00%
367.00	Gifts/Contributions	\$2,500	\$205	\$2,252	90.08%
367.00	Foundation Grants / Donations	\$15,000	\$2,168	\$26,020	173.47%
369.40	Insurance Reimbursements	\$0	\$0	\$4,600	100.00%
369.90	Miscellaneous	\$10,000	\$563	\$15,325	153.25%
369.90	Postage Contributions	\$0	\$0	\$0	100.00%
369.90	Other Miscellaneous - E-Rate	\$50,000	\$0	\$2,495	4.99%
395.00	Sale of Assets	\$5,000	\$602	\$11,585	231.70%
	<b>Total Miscellaneous</b>	<b><u>\$332,500</u></b>	<b><u>\$9,628</u></b>	<b><u>\$236,116</u></b>	<b><u>71.01%</u></b>
		<b><u>\$17,574,698</u></b>	<b><u>\$4,332,962</u></b>	<b><u>\$14,209,947</u></b>	<b><u>80.85%</u></b>

**Fort Vancouver Regional Library District**  
Statement of Expenses  
For the Year Ending October, 2008 (With year-to-date totals)

<u>Bars</u>	<u>Description</u>	<u>2008 Budget (Amended June 2008)</u>	<u>October, 2008 Expenditures</u>	<u>Year-to-Date Totals thru October, 2008</u>	<u>Year to Date Annual Budget Percentage</u>
<b>Personnel Services</b>					
572.00	Wages & Benefits	11,984,589	1,023,855	10,221,885	85.29%
572.28	Unemployment Expense	1,000	0	12,093	1209.30%
		<b>11,985,589</b>	<b>1,023,855</b>	<b>10,233,978</b>	<b>85.39%</b>
<b>Supplies</b>					
572.30	Supplies	558,532	142,304	533,112	95.45%
572.35 & 38	Computer Supplies / Small Equipment	720,128	104,293	596,920	82.89%
		<b>1,278,660</b>	<b>246,597</b>	<b>1,130,032</b>	<b>88.38%</b>
<b>Library Books / Materials</b>					
572.34	Library Books & Materials	1,694,160	157,710	1,227,070	72.43%
572.39	Electronic Resources	301,500	34,261	249,053	82.60%
		<b>1,995,660</b>	<b>191,971</b>	<b>1,476,123</b>	<b>73.97%</b>
<b>Other Services / Charges</b>					
572.41	Professional Services	614,333	44,569	424,175	69.05%
572.42	Communications	753,160	57,174	651,298	86.48%
572.43	Training / Travel	139,457	5,652	125,456	89.96%
572.44	Advertising	39,000	458	18,426	47.25%
572.45	Rentals / Leases	382,539	37,498	328,553	85.89%
572.46	Insurance	110,000	14,258	114,577	104.16%
572.47	Utilities	275,025	13,376	191,081	69.48%
572.48	Repairs & Maintenance	392,698	12,544	257,838	65.66%
572.49	Misc / Dues / Printing / Other	174,025	11,216	113,152	65.02%
572.50	Intergovernmental Services	14,400	154	12,341	85.70%
		<b>2,894,637</b>	<b>196,899</b>	<b>2,236,897</b>	<b>77.28%</b>
<b>Capital Outlay</b>					
572.62	Buildings / Non-Owned	87,300	4,558	58,666	67.20%
594.62	Buildings / Owned	5,000	0	2,785	55.69%
597.62	Battle Ground Building Fund	986,000	238	986,238	100.02%
594.64	Machinery & Equipment	167,950	5,733	66,622	39.67%
		<b>1,246,250</b>	<b>10,529</b>	<b>1,114,310</b>	<b>89.41%</b>
<b>Debt Services</b>					
591.70	Debt Service Principal	59,671	0	62,843	105.32%
592.80	Debt Service Interest	29,472	0	26,299	89.23%
		<b>89,143</b>	<b>0</b>	<b>89,142</b>	<b>100.00%</b>
<b>Contracting Libraries</b>					
	Contract Libraries Expenditures	11,500	572	18,389	159.91%
		<b>11,500</b>	<b>572</b>	<b>18,389</b>	<b>159.91%</b>
<b>Grand Total:</b>		<b>\$ 19,501,439</b>	<b>\$ 1,670,423</b>	<b>\$ 16,298,872</b>	<b>83.58%</b>

## Personnel 2008

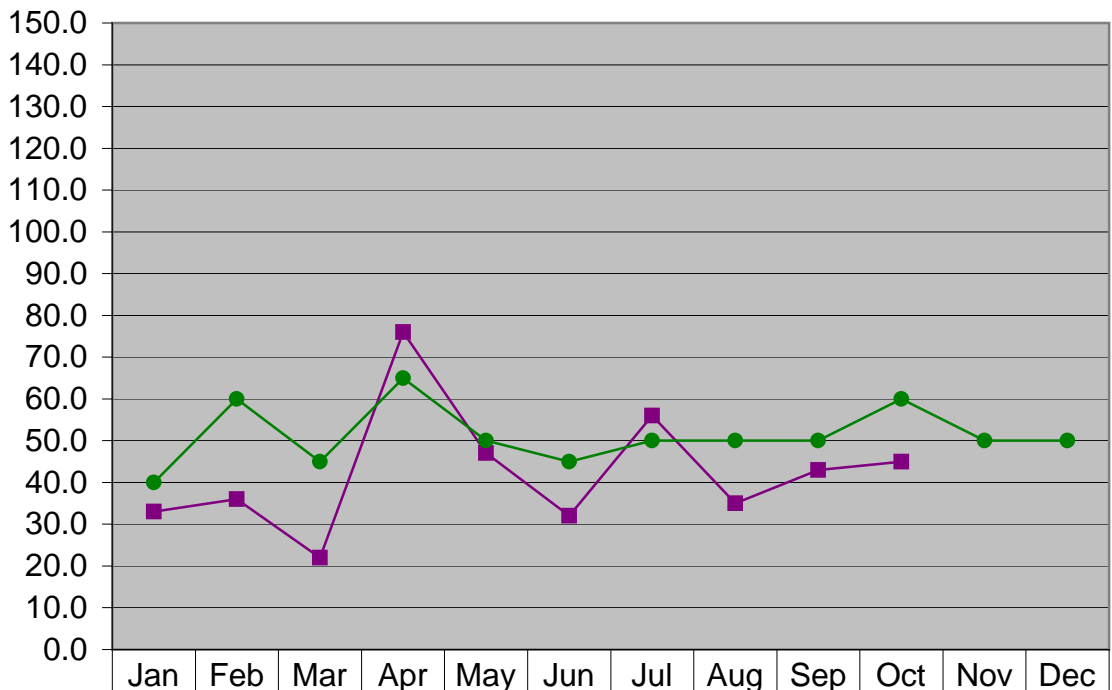
Dollars in Thousands



Month Total	950	899	1289	1012	988	942	1083	1037	1027	1024		
Expected Expense	972	1006	1006	1006	1006	998	998	999	999	999	998	998
Cumulative - Total	950	1849	3138	4150	5138	6080	7163	8200	9227	10251	10251	10251
Cumulative - Expected	972	1978	2984	3990	4996	5994	6992	7991	8990	9989	10987	11985

## Professional Services 2008

Dollars in Thousands

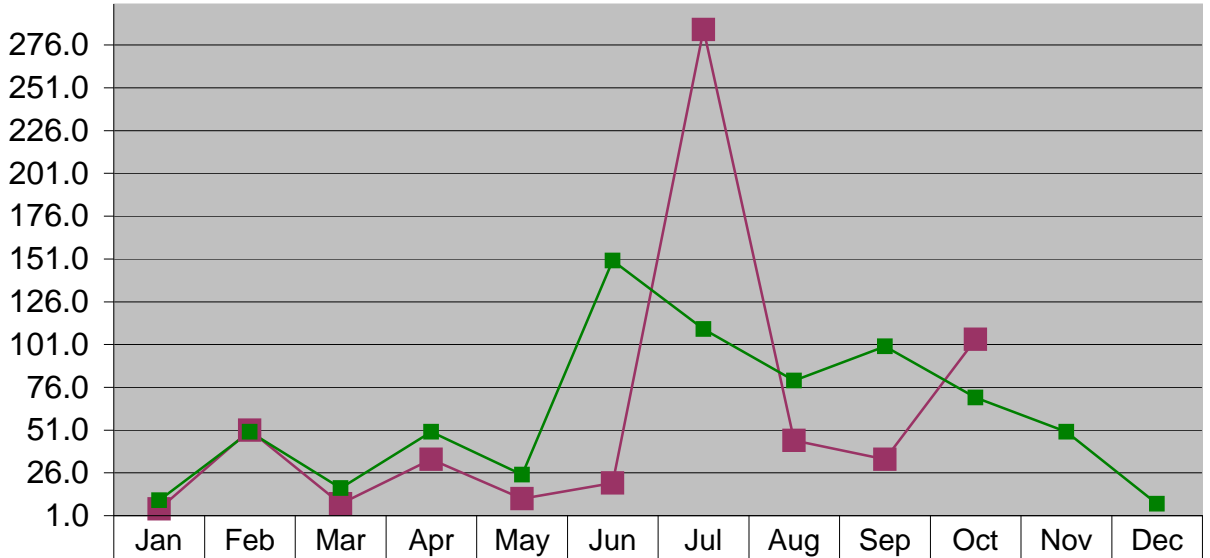


Month Total	33	36	22	76	47	32	56	35	43	45		
Expected Expense	40	60	45	65	50	45	50	50	50	60	50	50
Cumulative - Total	33	69	91	167	214	246	302	337	380	425	425	425
Cumulative - Expected	40	100	145	210	260	305	355	405	455	515	565	615

\*\* "All Other professional services" includes: OCLC, TSD Preprocessing services, Telephone System configuration and Staff Development Conference"

## Small Equipment 2008

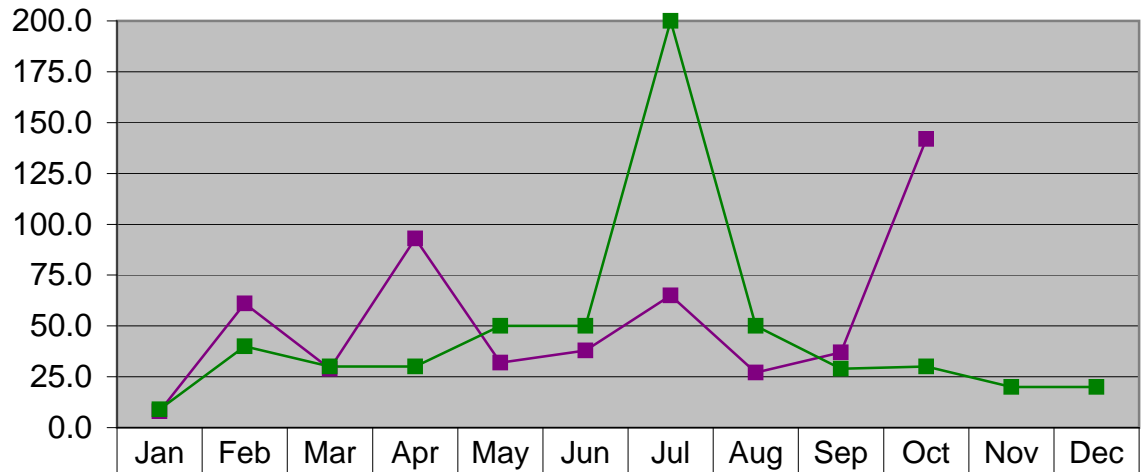
Dollars in Thousands



Month Total	5.0	51.0	8.0	34.0	11.0	20.0	285.0	45.0	34.0	104.0		
Expected	10.0	50.0	17.0	50.0	25.0	150.0	110.0	80.0	100.0	70.0	50.0	8.0
Cumulative - Total	5.0	56.0	64.0	98.0	109.0	129.0	414.0	459.0	493.0	597.0	597.0	597.0
Cumulative - Expected	10.0	60.0	77.0	127.0	152.0	302.0	412.0	492.0	592.0	662.0	712.0	720.0

## General and Other Supplies 2008

Dollars in Thousands

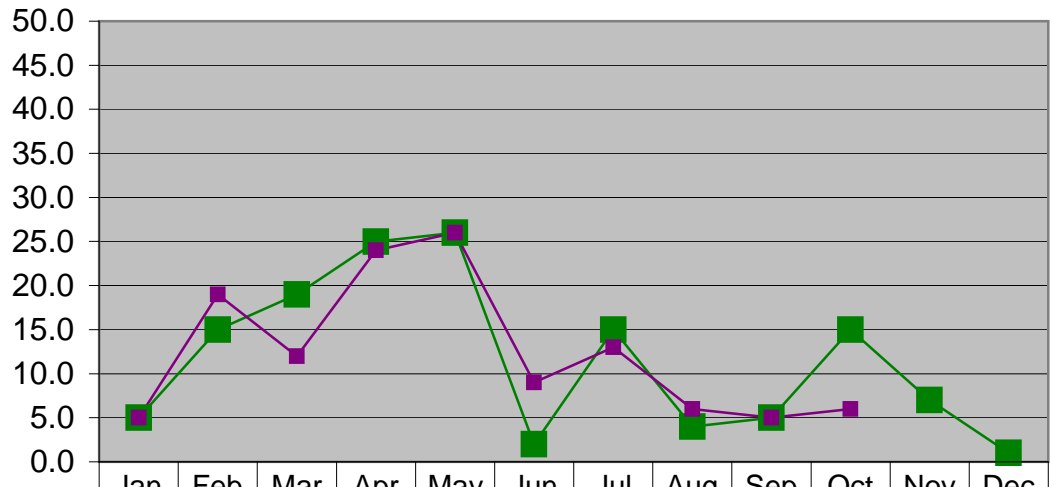


Total Supplies	8.0	61.0	29.0	93.0	32.0	38.0	65.0	27.0	37.0	142.0		
Expected	9.0	40.0	30.0	30.0	50.0	50.0	200.0	50.0	29.0	30.0	20.0	20.0
Cumulative - Total	8.0	69.0	98.0	191.0	223.0	261.0	326.0	353.0	390.0	532.0	532.0	532.0
Cumulative - Expected	9.0	49.0	79.0	109.0	159.0	209.0	409.0	459.0	488.0	518.0	538.0	558.0

\*\* "All Other Supplies includes Facilities, Computer Services, Janitorial and Summer Reading Supplies

## Travel & Training 2008

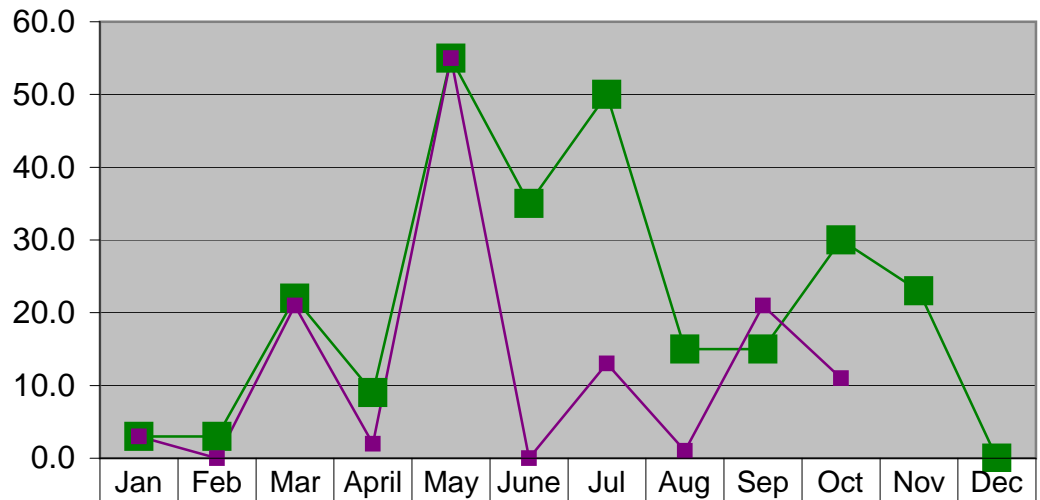
Dollars in Thousands



	Jan	Feb	Mar	Apr	May	Jun	Jul	Aug	Sep	Oct	Nov	Dec
Expected	5	15	19	25	26	2	15	4	5	15	7	1
Month Total	5	19	12	24	26	9	13	6	5	6		
Cumulative - Total	5	24	36	60	86	95	108	114	119	125	125	125
Cumulative - Expected	5	20	39	64	90	92	107	111	116	131	138	139

## Capital Expenses 2008

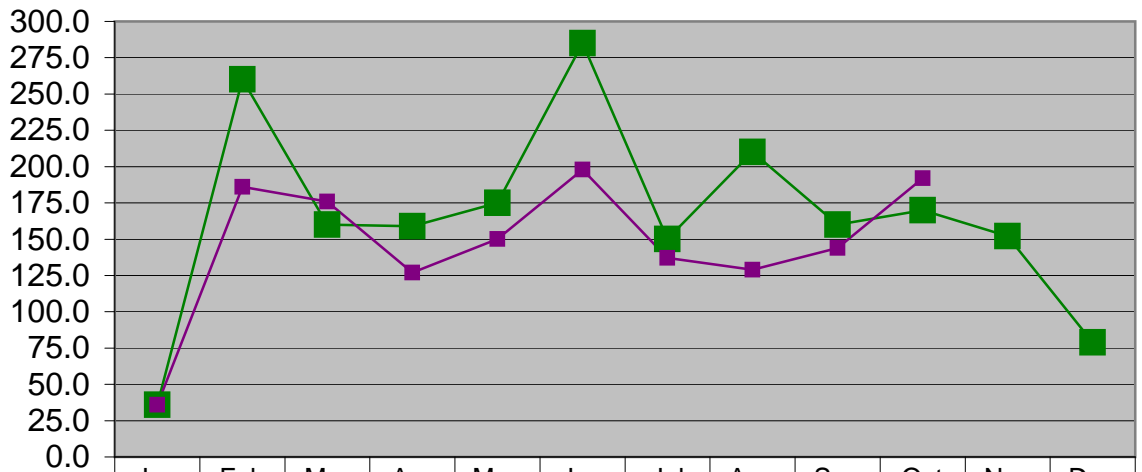
Dollars in Thousands



Expected	3	3	22	9	55	35	50	15	15	30	23	0
Month Total	3	0	21	2	55	0	13	1	21	11		
Cumulative - Total	3	3	24	26	81	81	94	95	116	127	127	127
Cumulative - Expected	3	6	28	37	92	127	177	192	207	237	260	260

## Library Materials 2008

Dollars in Thousands



Expected	36.0	260.0	160.0	159.0	175.0	285.0	150.0	210.0	160.0	170.0	152.0	79.0
Month Total	36.0	186.0	176.0	127.0	150.0	198.0	137.0	129.0	144.0	192.0		
Cumulative - Total	39.0	225.0	401.0	528.0	678.0	876.0	1013.0	1142.0	1286.0	1478.0	1478.0	1478.0
Cumulative - Expected	36.0	296.0	456.0	615.0	790.0	1075.0	1225.0	1435.0	1595.0	1765.0	1917.0	1996.0