

Washougal Community Library

Fort Vancouver Regional Library

HACKER

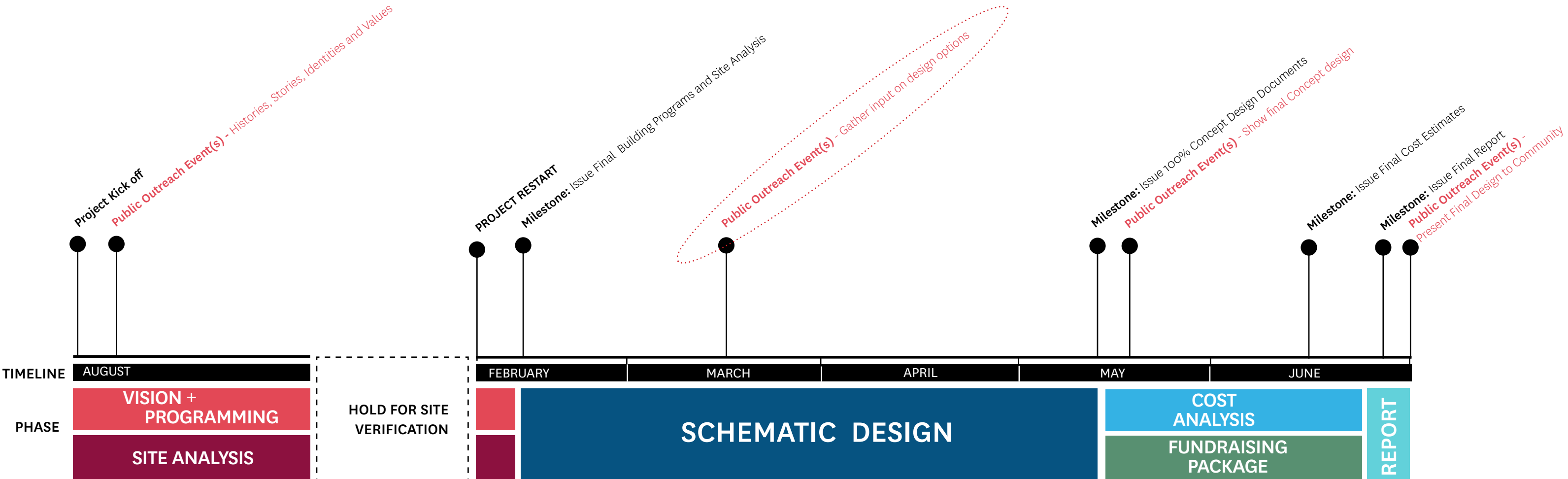


Agenda

- Project Schedule
- Criteria & Priorities: What We Heard at Prior Meeting
- Program Overview & Space Precedents
- Inspiration- History / Culture / Landscape
- Site Analysis Diagrams
- Plan Concepts

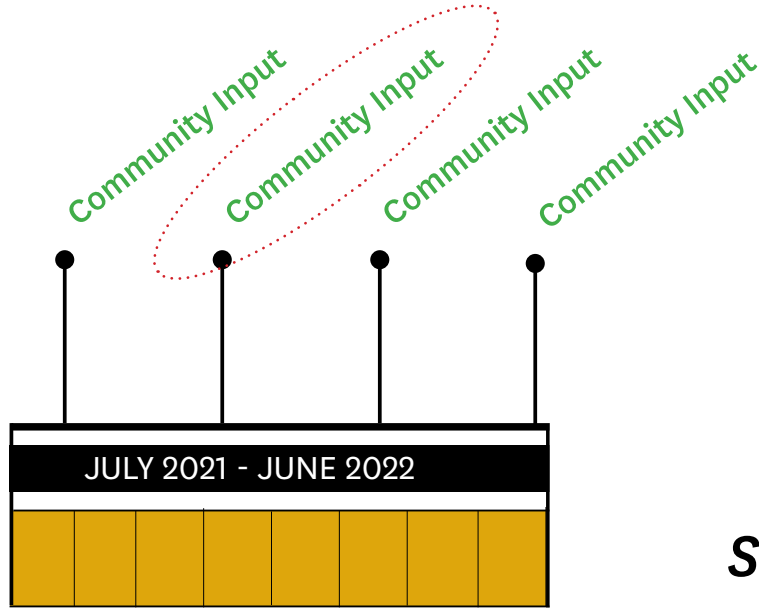


HACKER

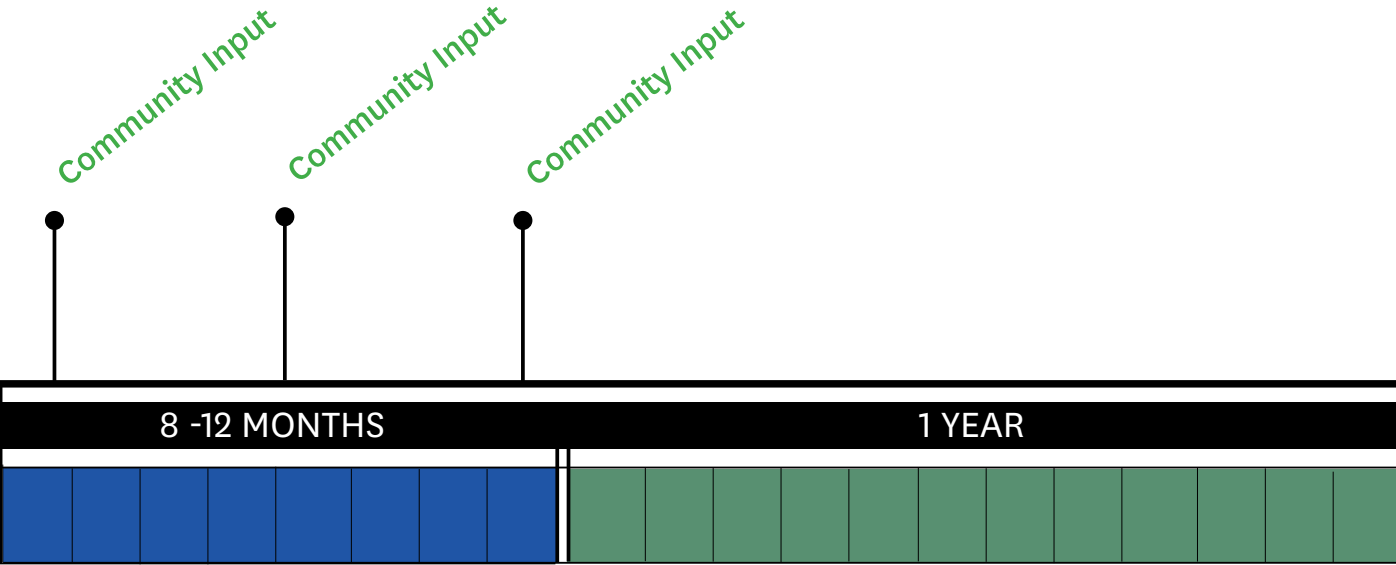


Project Timeline

HACKER



FUNDING STRATEGIES



PHASE 1
PROGRAM + CONCEPT DESIGN

PHASE 2
DESIGN DEVELOPMENT + CONSTRUCTION DRAWINGS

PHASE 3
CONSTRUCTION

Project Timeline

HACKER



Washougal Library Community Meeting #1



Community Meeting # 1, July 29, 2021

Project Goals - Community Meeting Comments

Spaces for Reading & Collection

- Retractable cover – still enjoy outside in mild weather.
- Rocking Chairs
- Comfortable Seating
- Natural light & big windows
- Chairs with plug-ins
- Image of Mendenhall Valley Library teen reading nook at window
- Image of Ledding Library Seating along windows
- Fireplace
- Acoustics—all spaces should be given max. acoustic attention to diminish noise
- No AMH. Breaks down & is expensive. Gives more area for manual check-in
- Image of Skylights in Ingelside Library
- Moveable shelves for max. flexibility
- More books
- Community (tourist) "kiosk" with art maps and local businesses info
- Book recommendations from community
- Space for local artists to display work
- Need enough books to browse and discover
- "Book Nook"

Spaces for Meeting & Making

- Handicap Accessibility in all areas including children's
- Making spaces for all ages, not just teens
- Art & interactive throughout library
- Lots of shelving to display books. We like to face out our Lucky Day books
- Art Space, not only gallery displays but also a "maker space"
- Meeting spaces please :)
- Portable shelves are great!
- Student "makerspace" area for projects
- Music recording room: instruments, recording equipment, soundproof. Jemtegaard MS has soundproof rec rooms for podcasts or webinars. Etc.
- Art throughout- no wasted space to have separate gallery
- No separate gallery, use meeting room & interior space throughout to maximize use & space.

Sustainability & Accessibility

- Drive through book-drop return
- Accessible Green Roof
- Drive up book pick-up
- Take into consideration the building to the east of the new library will be 2 stories
- Solar Energy
- Outdoor space with water feature and enough space to hold outdoor programs
- Love Wood—makes it feel "homey". Concrete = :(
- We really need covered bike facilities
- Outdoor space that can be converted to indoor space... big open sliding doors
- If only one floor—roof courtyard – garden area – walking path
- As much as possible, the building should produce energy for its use
- Handi-cap accessible
- Water conservation & LEED Solar
- Natural looking spaces, especially for outdoor space. Take a look at what they did at the roundabout in Camas... Fits in with the area
- Labyrinth!
- Flexible spaces that can be used in different ways
- Hearing loop in meeting room
- One consideration... when it rains, it really really rains. Keeping parking close
- Sustainable energy source – solar or heat pumps. No gas or oil
- Garden area & Rain Barrels
- Rain garden & other sustainable garden demo sites
- Image of all user restroom signage.

Project Goals - Community Meeting Comments

Spaces for Reading & Collection

- Retractable cover – still enjoy outside in mild weather.
- Rocking Chairs
- Comfortable Seating
- Natural light & big windows
- Chairs with plug-ins
- Image of Mendenhall Valley Library teen reading nook at window
- Image of Ledding Library Seating along windows
- Fireplace
- Acoustics—all spaces should be given max. acoustic attention to diminish noise
- No AMH. Breaks down & is expensive. Gives more area for manual check-in
- Image of Skylights in Ingelside Library
- Moveable shelves for max. flexibility
- More books
- Community (tourist) "kiosk" with art maps and local businesses info
- Book recommendations from community
- Space for local artists to display work
- Need enough books to browse and discover
- "Book Nook"

Spaces for Meeting & Making

- Handicap Accessibility in all areas including children's
- Making spaces for all ages, not just teens
- Art & interactive throughout library
- Lots of shelving to display books. We like to face out our Lucky Day books
- Art Space, not only gallery displays but also a "maker space"
- Meeting spaces please :)
- Portable shelves are great!
- Student "makerspace" area for projects
- Music recording room: instruments, recording equipment, soundproof. Jemtegaard MS has soundproof rec rooms for podcasts or webinars. Etc.
- Art throughout- no wasted space to have separate gallery
- No separate gallery, use meeting room & interior space throughout to maximize use & space.

Sustainability & Accessibility

- Drive through book-drop return
- Accessible Green Roof
- Drive up book pick-up
- Take into consideration the building to the east of the new library will be 2 stories
- Solar Energy
- Outdoor space with water feature and enough space to hold outdoor programs
- Love Wood—makes it feel "homey". Concrete = :(
- We really need covered bike facilities
- Outdoor space that can be converted to indoor space... big open sliding doors
- If only one floor—roof courtyard – garden area – walking path
- As much as possible, the building should produce energy for its use
- Handi-cap accessible
- Water conservation & LEED Solar
- Natural looking spaces, especially for outdoor space. Take a look at what they did at the roundabout in Camas... Fits in with the area
- Labyrinth!
- Flexible spaces that can be used in different ways
- Hearing loop in meeting room
- One consideration... when it rains, it really really rains. Keeping parking close
- Sustainable energy source – solar or heat pumps. No gas or oil
- Garden area & Rain Barrels
- Rain garden & other sustainable garden demo sites
- Image of all user restroom signage.

Project Goals - Community Meeting Comments

History & Stories

- Mountains, Trees, Steigerwald, Pendleton, Salmon, Lewis & Clark, Mill, MX, Water sports, Gorge
- Two Rivers Museum
- Exploring & Understanding of N, American History.
- Camas History Museum
- Lewis & Clark History
- Native American History
- Historical Society
- Coordination with City events & other events
- Local historical groups section
- Name the rooms: The Pendleton Room, The Chinook Salmon Room, etc. etc.
- Tribal History re: wetland
- Gordon Pinchot

Culture

- Please do look at Steigerwald Lake Wildlife Refuge Project
- Reach out to Rotary, BNSF RR for historical help and \$\$
- Role of Salmon
- Nature, People, local businesses
- Traffic – low to none
- WACA Washougal Arts & Culture Alliance
- Pendleton Woolen Mills
- Consider incorporating Pendleton designs and fabrics into furniture
- Tie in with Steigerwald Lake NWR
- Tie in with Two Rivers Museum
- Tie in with Lewis & Clark Corps of Discovery

Landscape

- Tie in with Port of Camas-Washougal (portw. com, & Waterfront at Parkers Landing.
- Historical Society, Two Rivers Museum, Steigerwald Refuge, Port
- Incorporate our Columbia River Gorge into the design or wall art
- Plants: Oregon Grape, ferns, sustainable plants, rigossa rose
- Washougal = "rushing water"
- Incorporate WSD school (K-12) names/mascots connection to kids & community pride
- It might be nice to have a water feature... outside/ courtyard
- Imagery: wood/stone, sword ferns, salmon, great blue heron, Washougal means "rushing water" so a water feature.

What We Heard

HACKER

COST

- Efficiency of the layout - no wasted space
- Cost effect design using local materials and trades
- Low operational + maintenance costs

SITE

- Consider the Main street context and strenghten it
- Create a positive & safe pedestrian experience
- Parking needs to be considered
- Create a connection with City Hall and the Senior Center.
- Optimize natural daylight

SUSTAINABILITY

- Energy efficiency for long term savings.
- Healthy materials + air
- Lots of natural daylight
- Water efficiency
- No fossil fuel use
- LEED Silver minimum

OTHER DESIGN CONSIDERATIONS

- Reflect the community of Washougal.
- Provide an active focal point in the downtown area.
- Spaces should be flexible and able to evolve with Library service
- Incorporate outdoor space with retractable cover for rain
- Incorporate art - both permanent and rotating
- Ensure the design works with the adjacent development and fits into main street
- Closely consider acoustics to allow noisy and quiet spaces
- Should feel welcoming to everyone
- Provide safe spaces for all ages
- Accessibility of all spaces.
- Provide after hours access to the community room and bathrooms
- Durable materials
- Easy to use systems

HACKER

		Total Net Assignable Square Feet:		10,686
		Total Gross Square Feet @80% Efficiency:		13,358
Code	General Area	Specific Area	SF	In GSF
Public Areas				
1.02	Public Areas	Lobby	371	IN GSF
1.04	Public Areas	Restrooms	300	
1.06	Public Areas	Art Gallery	100	
1.08	Public Areas	Friends of the Library Sales Area	80	
1.10	Public Areas	Information/Service Desk	140	
1.12	Public Areas	Holds/Express Checkout	90	
1.14	Public Areas	Copy Center	84	
1.16	Public Areas	Public Access Computers	239	
1.18	Public Areas	Seed Library	10	
	Total		1,414	
Adult Services				
2.02	Adult Services	Lucky Day	72	
2.04	Adult Services	Reference	12	
2.06	Adult Services	Media	60	
2.08	Adult Services	Adult Fiction	908	
2.10	Adult Services	Adult Graphic Novels	36	
2.12	Adult Services	Adult Nonfiction	996	
2.14	Adult Services	Large Print	60	
2.16	Adult Services	World Languages	36	
2.18	Adult Services	Adult Audiobooks	36	
2.20	Adult Services	Adult Periodicals	188	
	Total		2,404	
Youth Services				
3.02	Youth Services	Family Space	883	
3.04	Youth Services	Restroom	60	
3.06	Youth Services	Children's Library	1,270	
3.08	Youth Services	Young Adult Library	656	
	Total		2,869	

TOTAL SITE AREA: 17,250 SF

LIBRARY PROGRAM (GSF): 13,360 SF

REMAINING SPACE ON SITE: 3,890 SF

Meeting Areas				
4.02	Meeting Areas	Small Study Room A (4 seat)	120	
4.04	Meeting Areas	Small Study Room B (4 seat)	120	
4.06	Meeting Areas	8 - 10 Person Meeting Room	250	
4.08	Meeting Areas	Large Dividable Meeting Room	930	
4.10	Meeting Areas	Meeting Room Storage	322	
4.12	Meeting Areas	Kitchen	100	
	Total		1,842	
Staff Areas				
5.02	Staff Areas	Branch Manager's Office	200	
5.04	Staff Areas	Staff Workstations	320	
5.06	Staff Areas	Staff Workroom	609	
5.08	Staff Areas	Staff Lounge	238	
5.10	Staff Areas	Wellness Room	100	
5.12	Staff Areas	Staff Restroom	60	
5.14	Staff Areas	Staff Shower/Restroom	60	
	Total		1,587	
Support Areas				
6.02	Support Areas	Storage and Supply Room	100	
6.04	Support Areas	Friends of the Library Storage Area	50	
6.06	Support Areas	Custodial Services	90	
6.08	Support Areas	Telecommunications Room	100	
6.10	Support Areas	Mechanical Room	200	
6.12	Support Areas	Electrical Room	30	
	Total		570	
Grand Total			10,686	

TOTAL - 13,360 GSF

PUBLIC LOBBY

COMMUNITY ROOM

MEETING ROOMS

ADULT

CHILDRENS

TEEN

ADMIN

SERVICE

Program

HACKER



ADULT SPACES

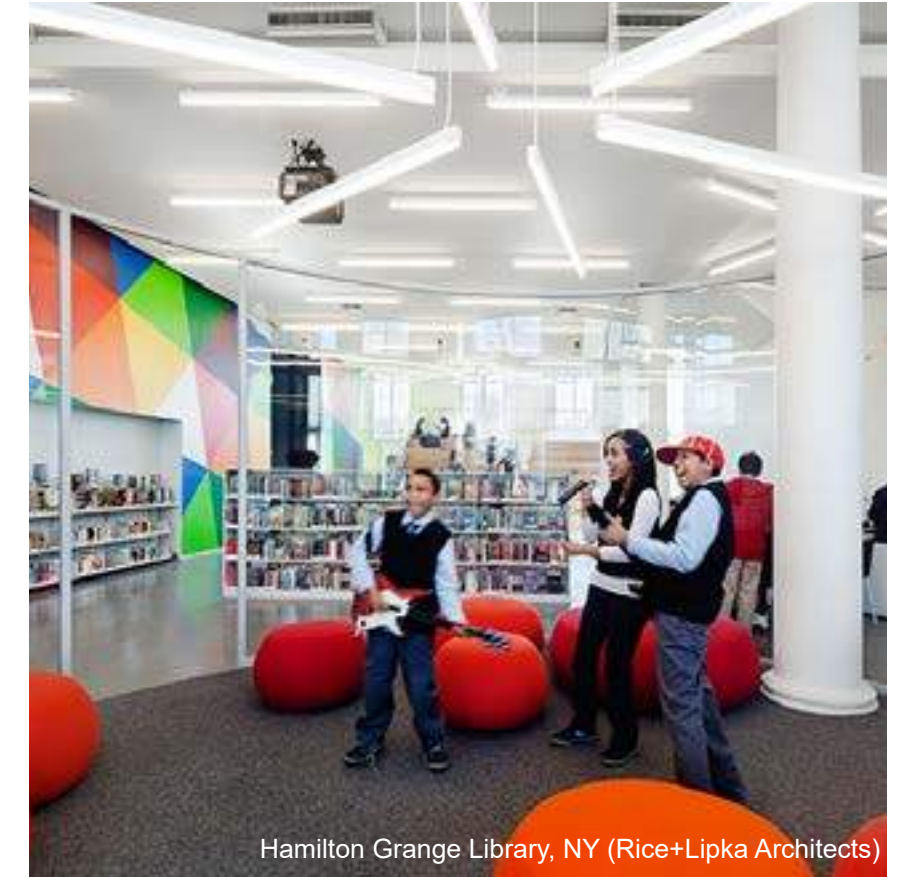
- Approximately 2,400 SF
- Capacity for 23,000 items including books, periodicals, DVDs, and audio books
- Over 2,000 books and other materials in Spanish
- 14 lounge chairs
- 22 seats for reading / PCs



CHILDRENS SPACES

- Approximately 2,200 SF of dedicated Children's & Family Area
- Capacity for Approximately 20,000 children's books and other materials
- 14 seats for reading / PCs
- 12 lounge seats
- Adjacent Family Restroom

HACKER



TEEN SPACES

- Approximately 650 SF dedicated teen area
- Capacity for Approx 2,000 Young Adult/Teen books and other materials
- 10 seats for PCs/reading
- 6 lounge seats

HACKER



MEETING & GATHERING SPACES

- (1) Community Meeting Room (capacity: 86, seated. 186, standing).
- (1) 6-10 person meeting room
- (2) 2-4 person meeting rooms

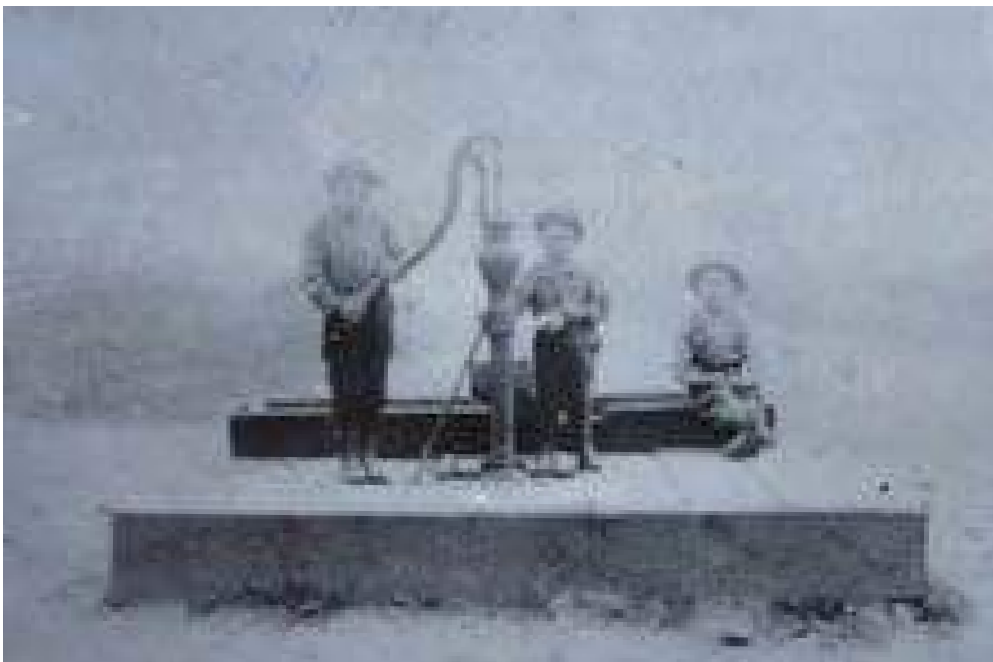
HACKER



OUTDOOR SPACE

- Covered outdoor space or retractable cover
- Space for various outdoor uses & programs
- Water feature

HACKER

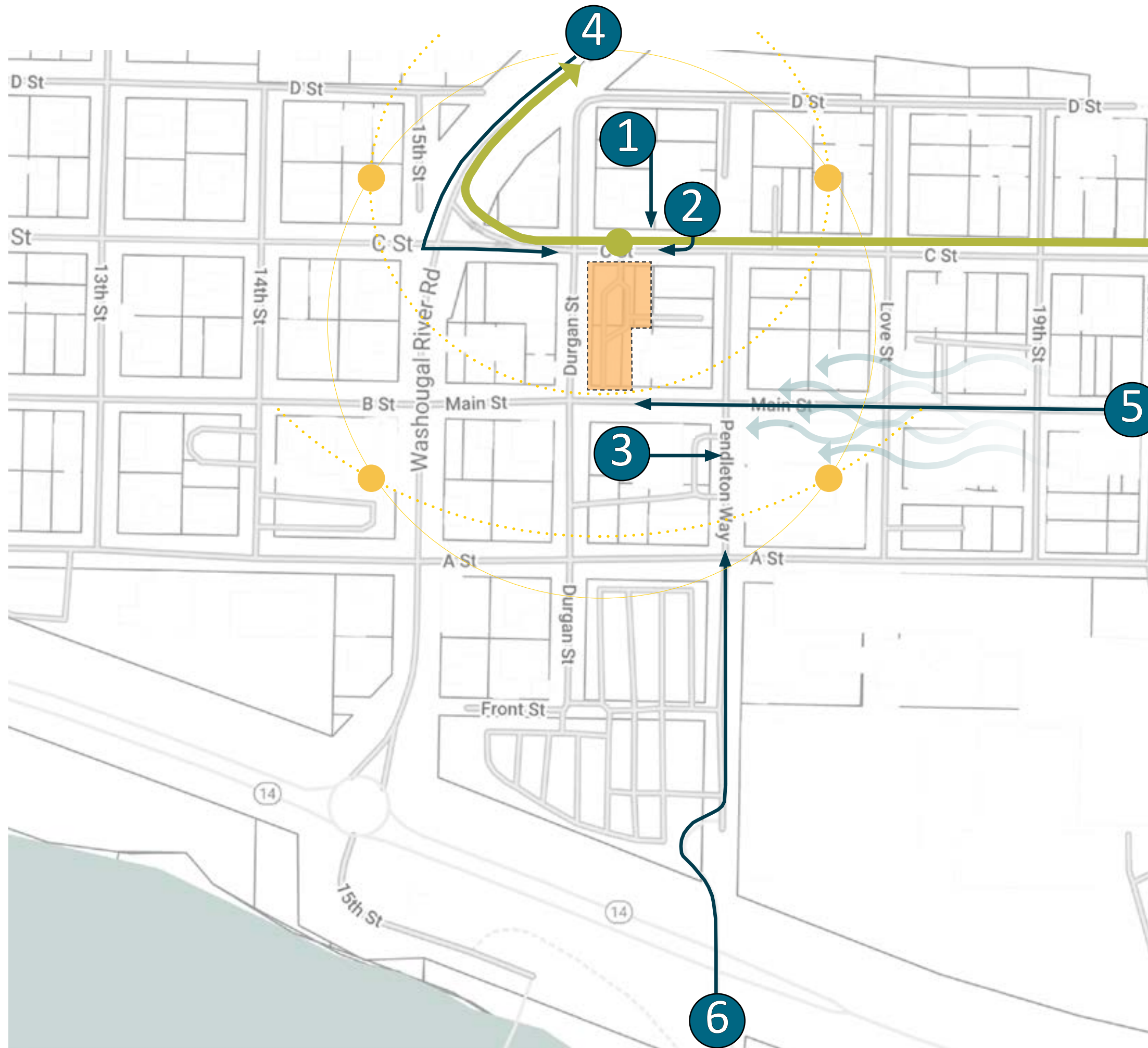


HACKER



HACKER



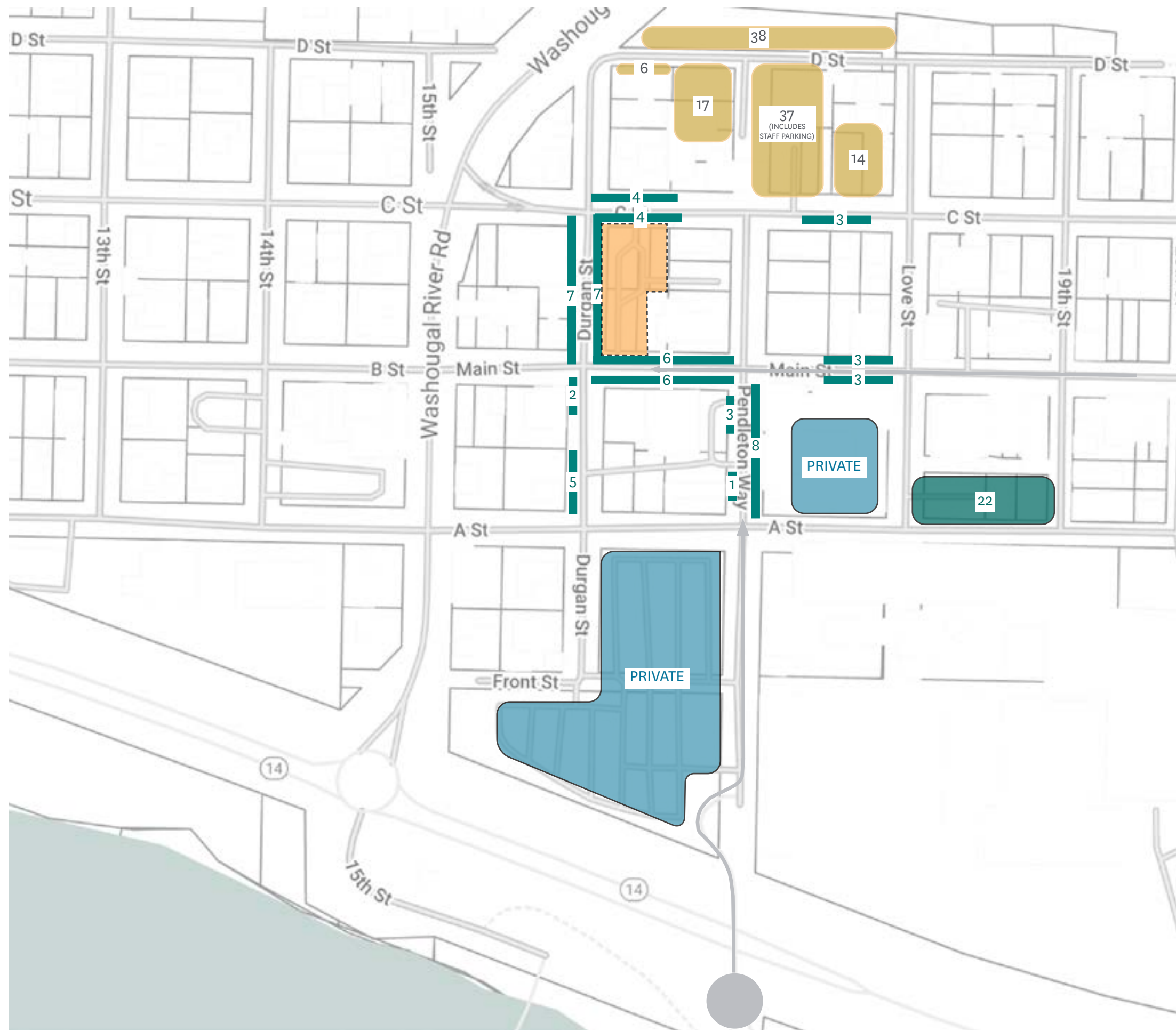


WHERE ARE PEOPLE COMING FROM?

- 1 Washougal Community Center
- 2 City of Washougal
- 3 Post Office
- 4 Jemtegaard Middle School & Washougal Highschool, via Evergreen Way
- 5 East Washougal, via Main Street
- 6 Steamboat Landing Park & Captain William Clark Trail

- PUBLIC TRANSPORTATION
- ◀ PREVAILING EASTERN WINDS
- SUN PATH DIAGRAM (Summer / Winter Solstice)

Site Analysis



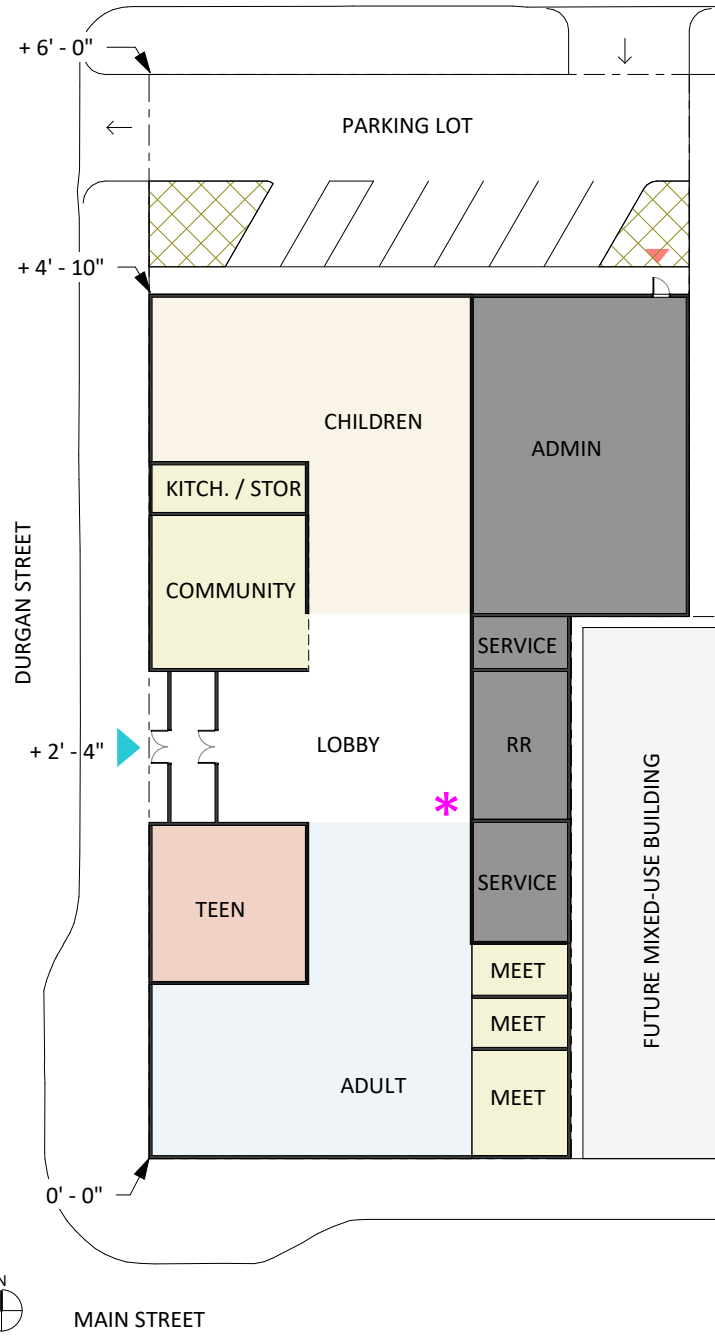
WHERE ARE PEOPLE PARKING?

-  Street Parking (Free)
-  Parking Lots (Free)
-  Parking Lots (Private)
-  Parking Lots (Future Development)

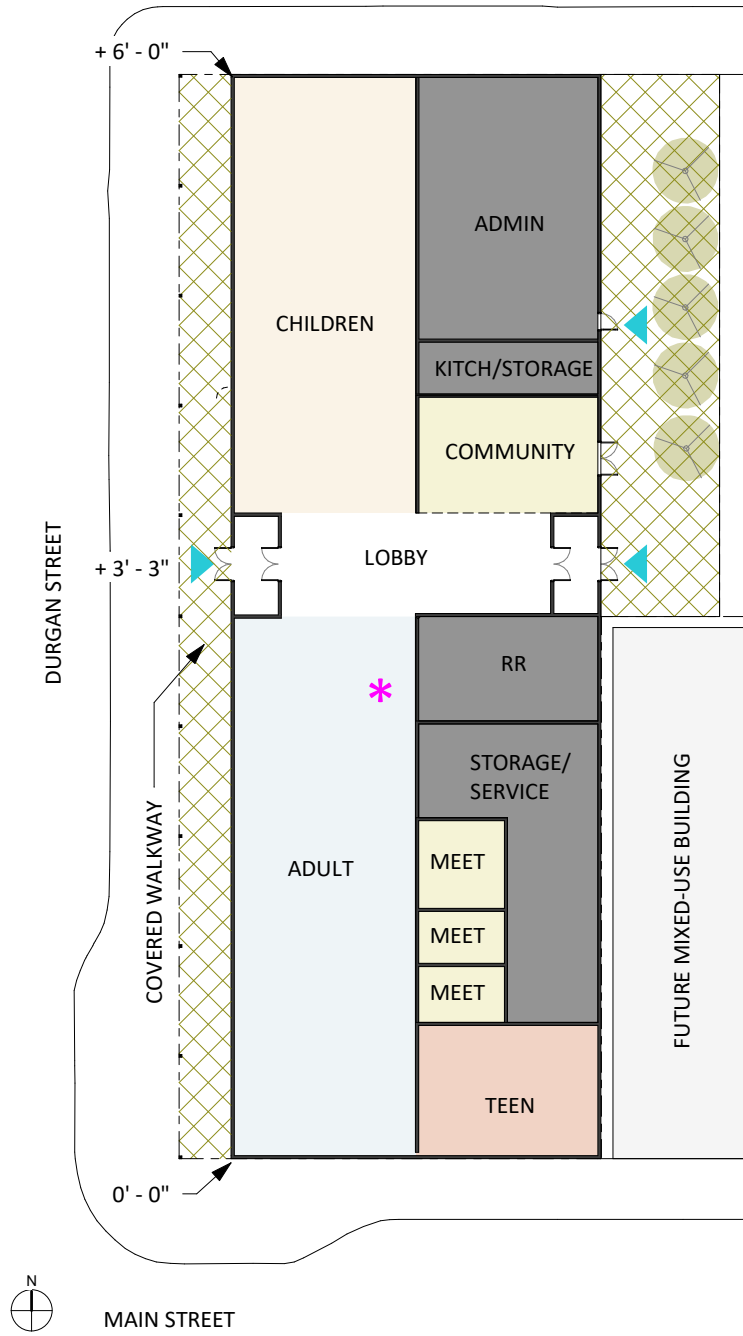
Site Analysis

HACKER

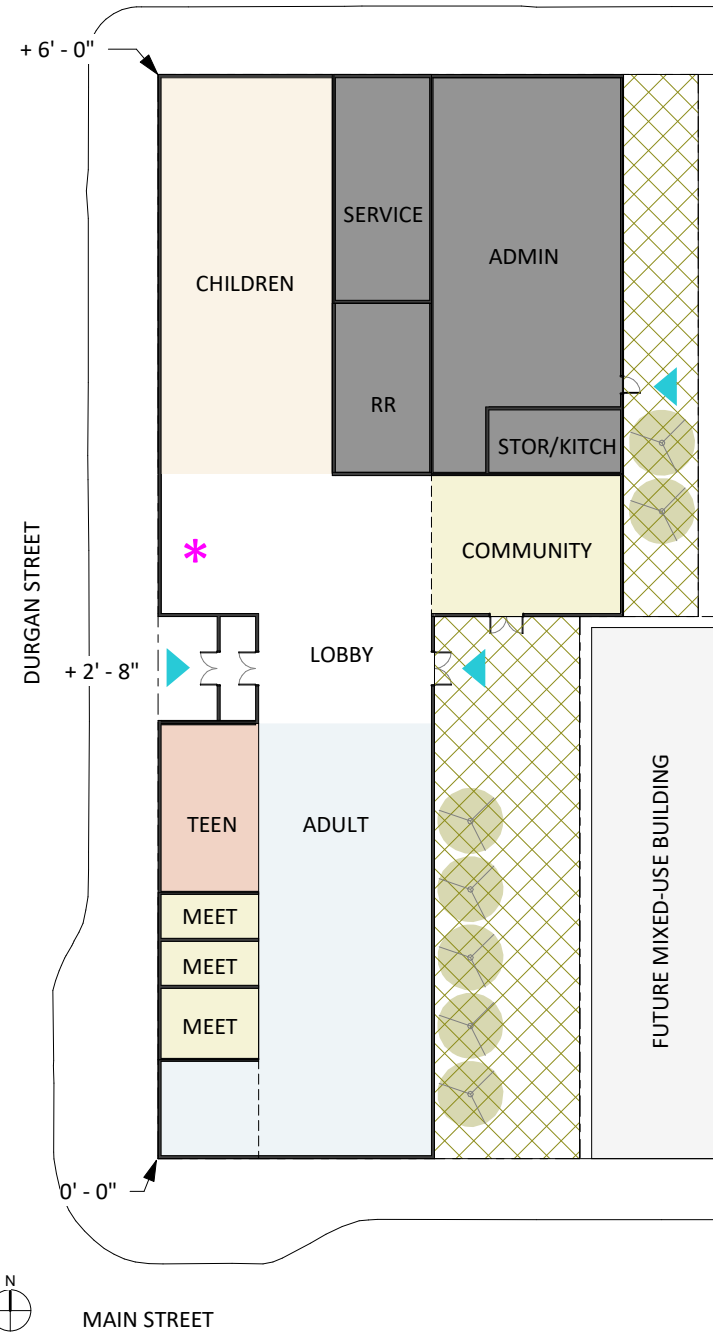
OPTION 1 - With Parking



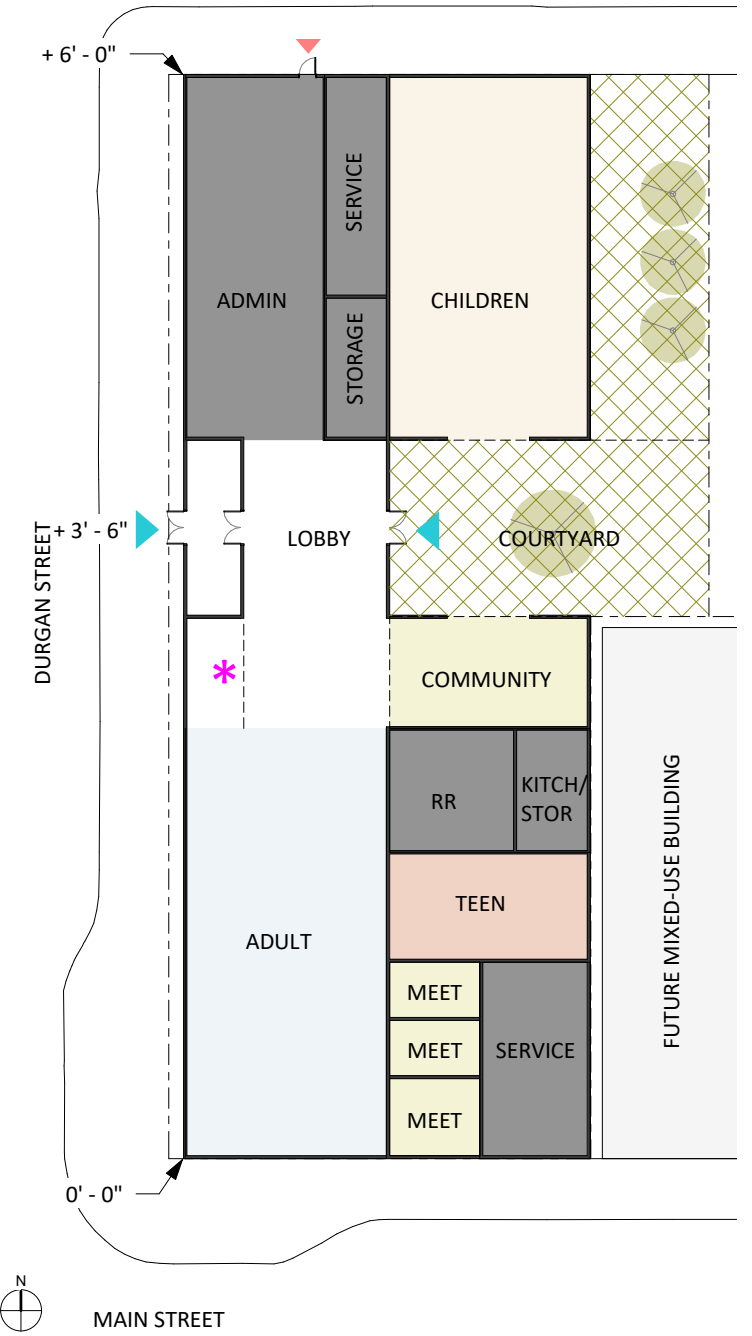
OPTION 2 - Covered Entry



OPTION 3 - Main St. Entry Court

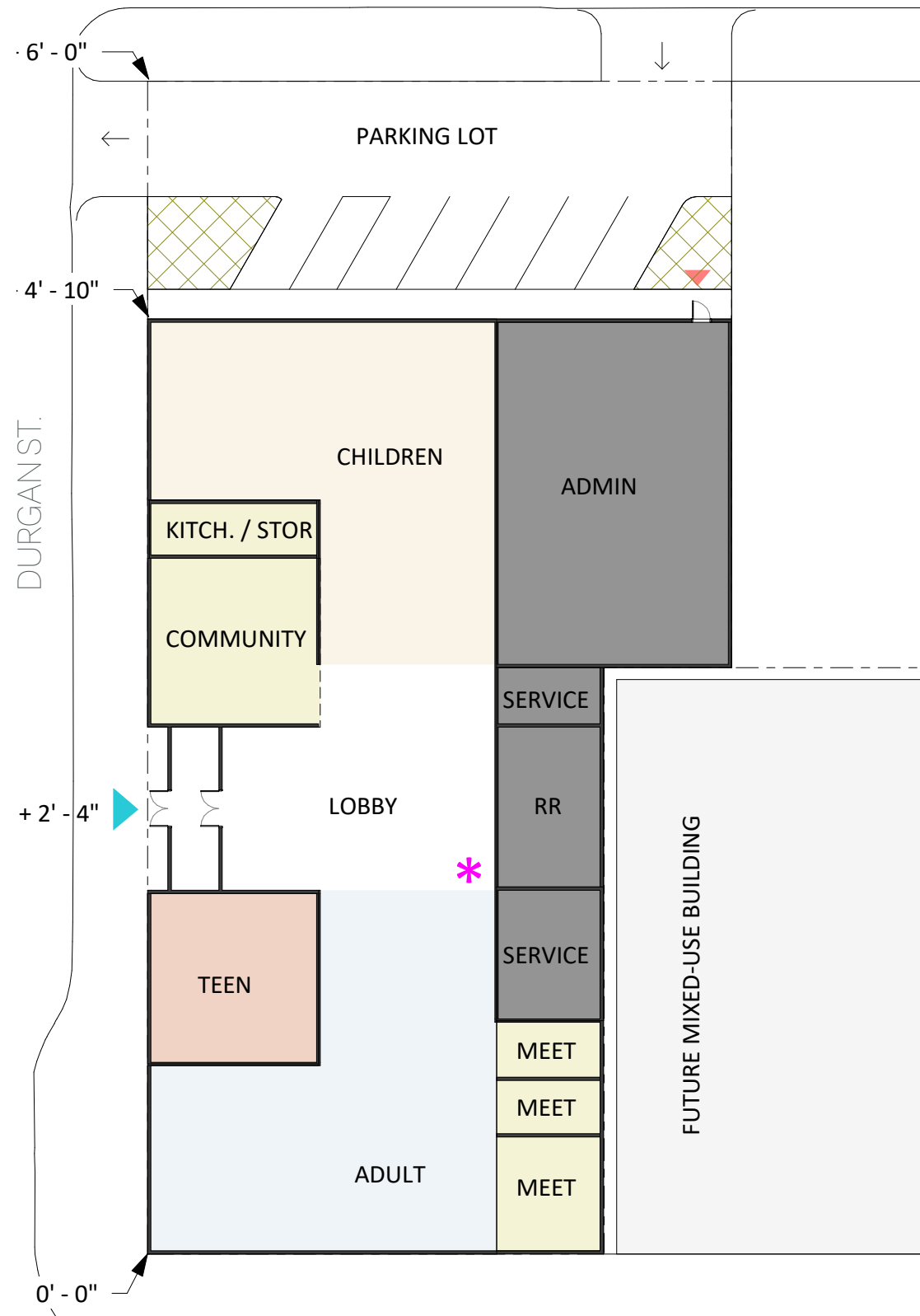


OPTION 4 - Courtyard



Plan Studies

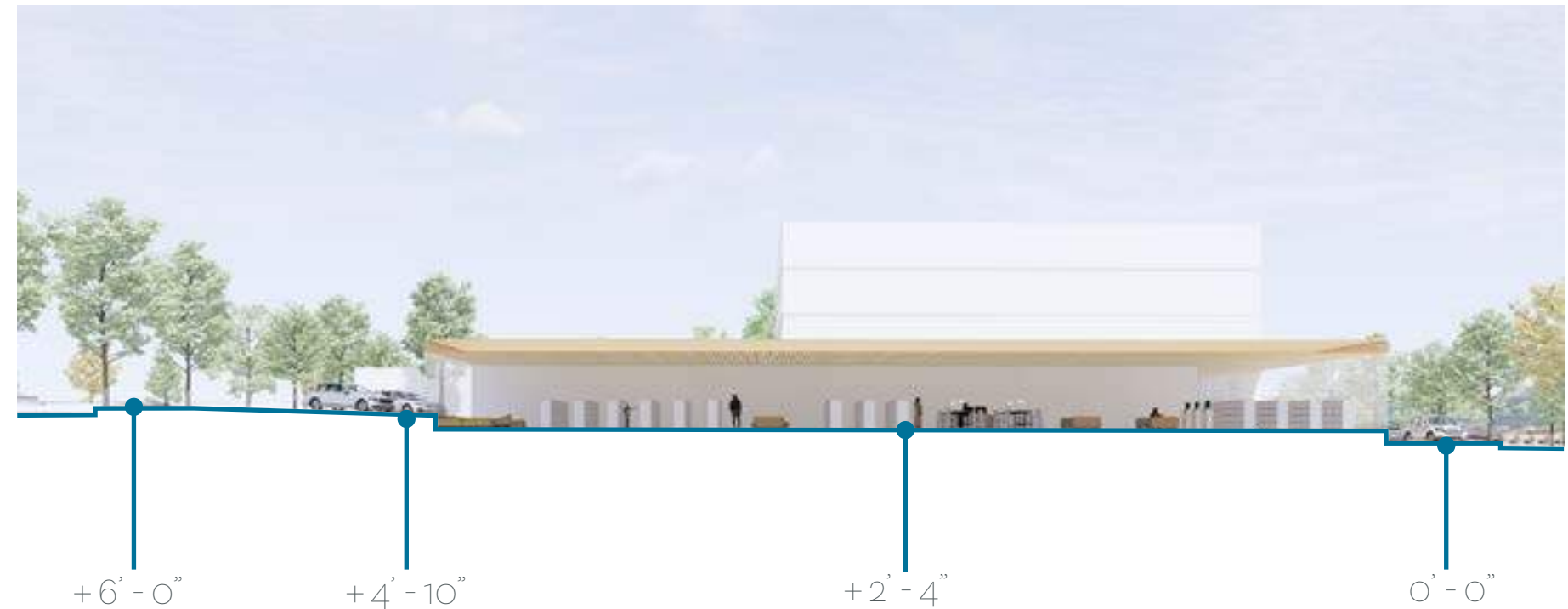
HACKER



OVERVIEW

- 13,280 SF LIBRARY
- LEFTOVER SITE SPACE: PARKING LOT WITH (6) PARKING STALLS AND ONE-WAY DRIVE AISLE WITH BOOK DROP
- MAIN ENTRY APPROX 75' FROM MAIN ST.
- FLOOR ELEVATION APPROX 2'-4" ABOVE MAIN STREET
- ADA ENTRANCE THROUGH MAIN ENTRY
- NO SEPARATE ADA STAFF ENTRANCE

6 FT OF GRADE CHANGE BETWEEN MAIN ST AND C ST (3% SLOPE)

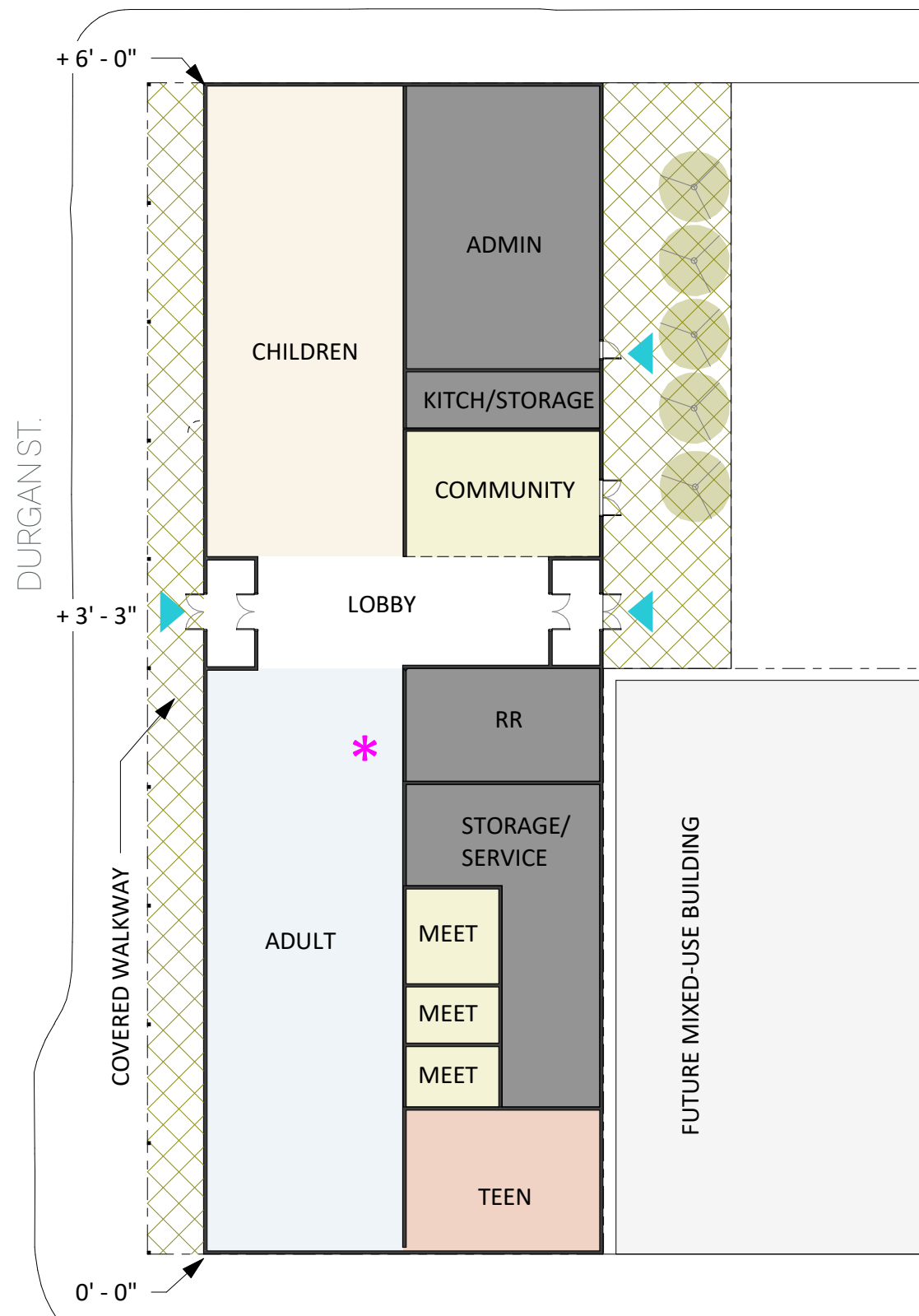


Option 1 - On Site Parking



Option 1 - On Site Parking

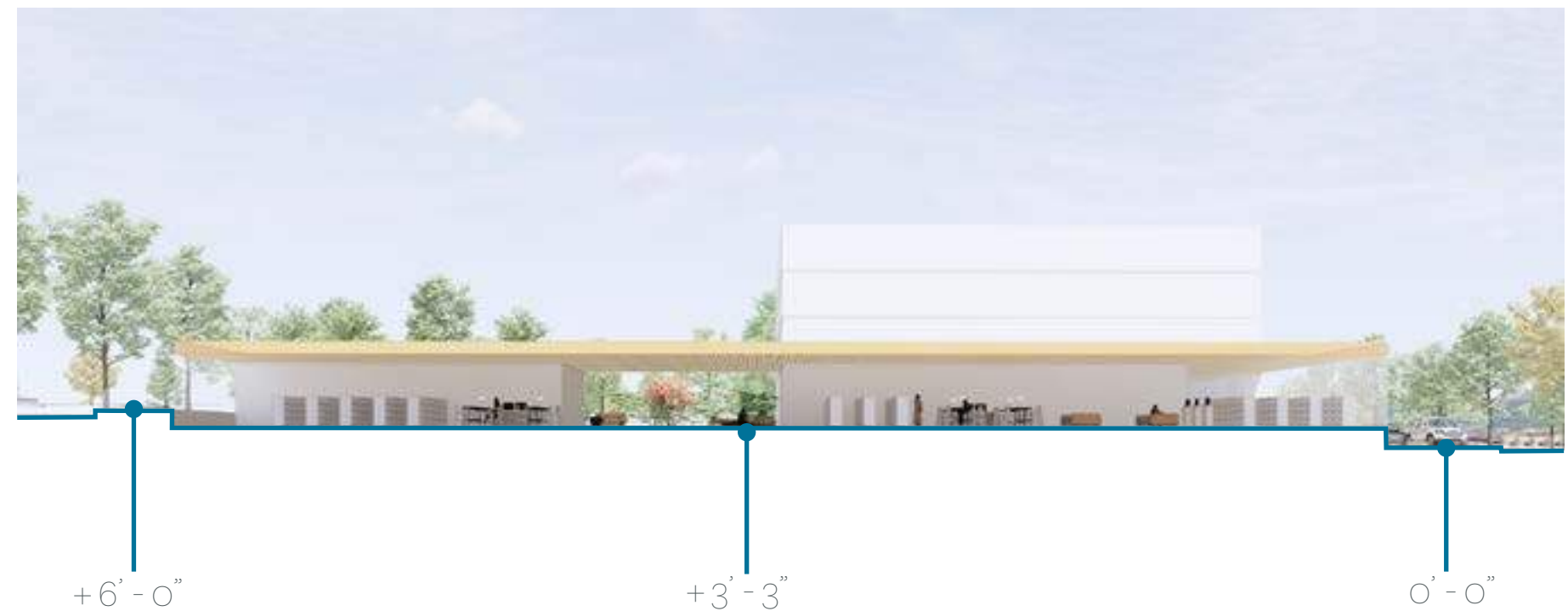
HACKER



OVERVIEW

- 13,280 SF LIBRARY
- LEFTOVER SITE SPACE: RECESSED WALKWAY ALONG DURGAN + ENTRY COURT OFF C ST.
- MAIN ENTRY APPROX 108' FROM MAIN ST.
- FLOOR ELEVATION APPROX 3'-3" ABOVE MAIN ST. AND 2'-9" BELOW C ST.
- SEPARATE ADA STAFF ENTRANCE

6 FT OF GRADE CHANGE BETWEEN MAIN ST AND C ST (3% SLOPE)



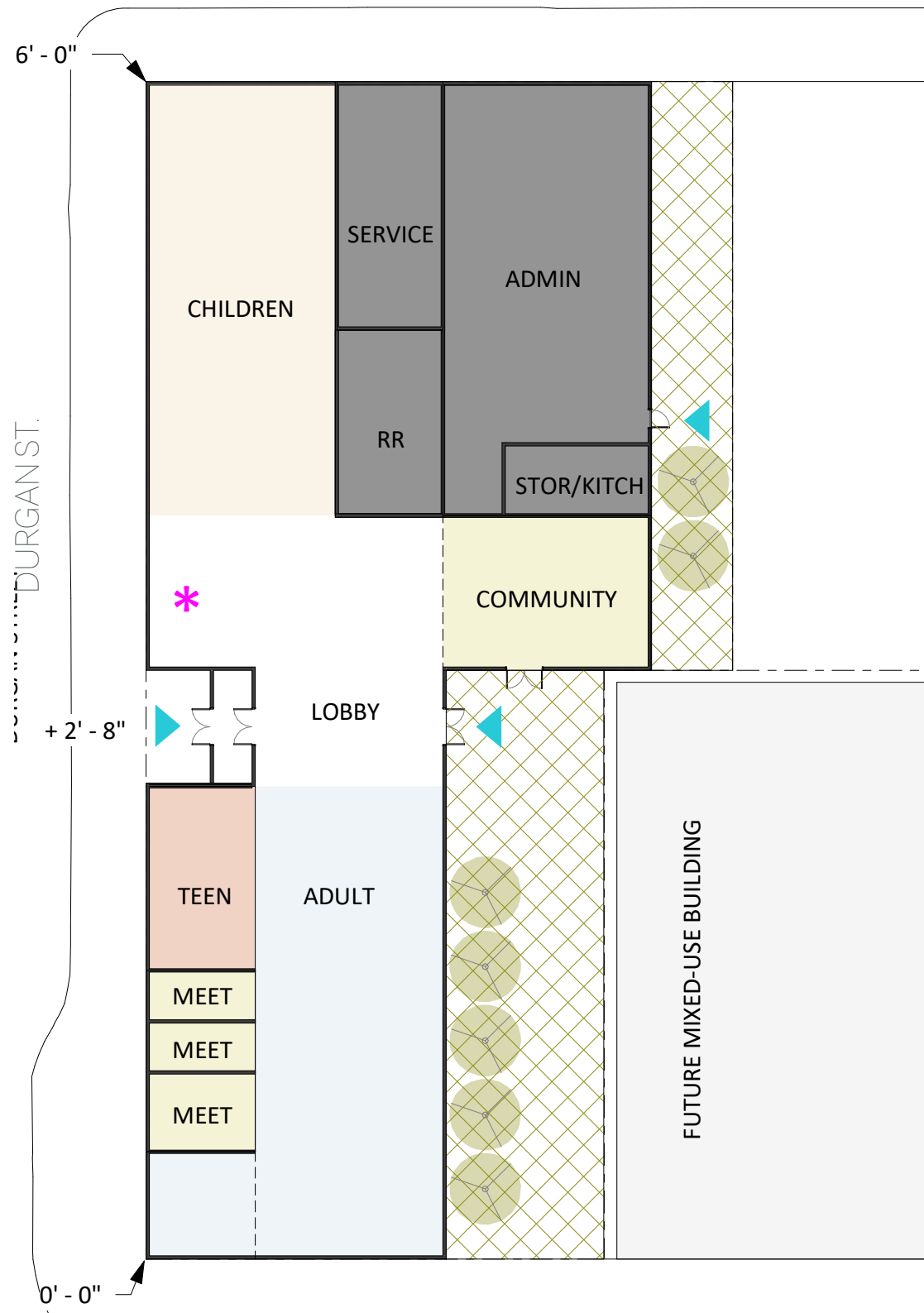
MAIN ST.

Option 2 - Entry Porch



Option 2 - Entry Porch

HACKER

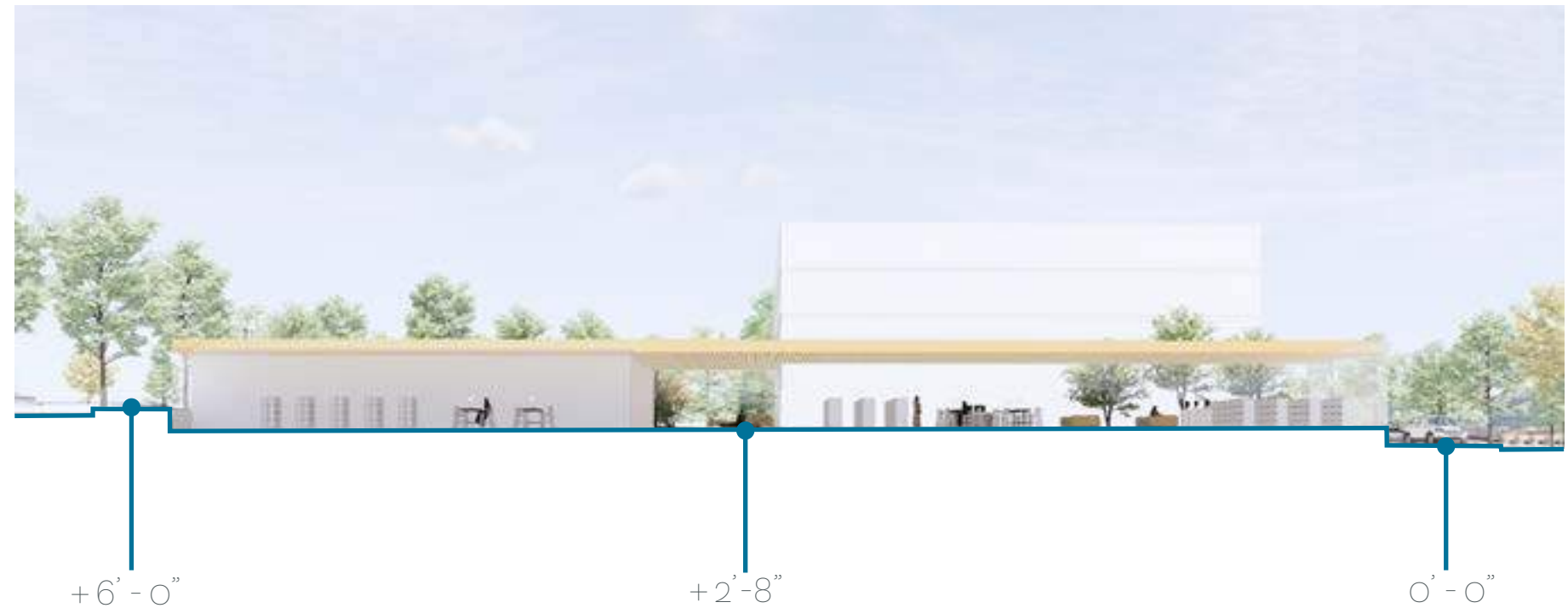


MAIN ST.

OVERVIEW

- 13,280 SF LIBRARY
- LEFTOVER SITE SPACE: ENTRY COURT OFF MAIN ST. AND SEPARATE STAFF ENTRANCE
- MAIN ENTRY APPROX 89' FROM MAIN ST.
- FLOOR ELEVATION APPROX 2'-8" ABOVE MAIN ST. AND 3'-4" BELOW C ST.
- SEPARATE ADA STAFF ENTRANCE

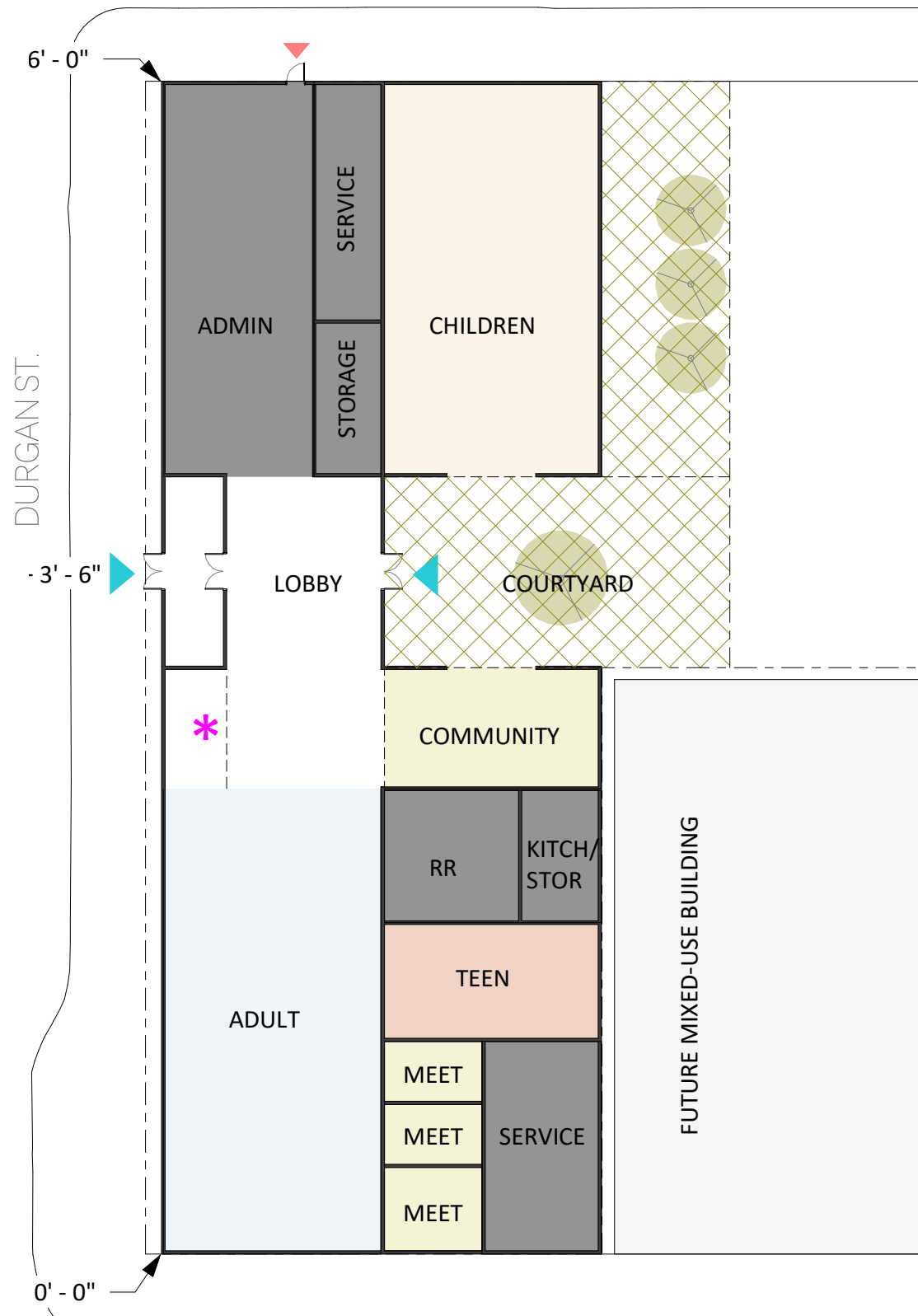
6 FT OF GRADE CHANGE BETWEEN MAIN ST AND C ST (3% SLOPE)



Option 3 - Main St. Court



HACKER



OVERVIEW

- 13,280 SF LIBRARY
- LEFTOVER SITE SPACE: CENTRAL COURTYARD WITH ENTRY COURT OFF C ST.
- MAIN ENTRY APPROX 110' FROM MAIN ST.
- FLOOR ELEVATION APPROX 3'-6" ABOVE MAIN ST. AND 2'-6" BELOW C ST.
- ADA ENTRANCE THROUGH MAIN ENTRY
- NO SEPARATE ADA STAFF ENTRANCE

6 FT OF GRADE CHANGE BETWEEN MAIN ST AND C ST (3% SLOPE)



Option 4 - Courtyard



Option 4 - Courtyard

HACKER

Questions?